



Una

Residences







CONTENT

I - Presentation

II – Floor Plans

III - Amenities

IV - Why Una Residences?



I/ PRESENTATION

Una Residences is a brand-new boutique waterfront building under construction in Miami's South Brickell neighborhood.

Designed by Adrian Smith + Gordon Gill Architecture, Una takes inspiration from the elegant shapes and materials of classic yacht design. The building will be instantly recognizable by the sweeping curve of its dramatic silhouette, the glass surfaces that reflect the dazzling sunlight, and the floor-to-ceiling windows that offer spectacular views of the city and the bay. The striking architecture of the building will be complemented by lush gardens designed by world-renowned landscape architect Enzo Enea, an extensive amenities program, and private boat slips. With easy access to Coconut Grove, Downtown, the Miami International Airport, and the beach of Key Biscayne, Una is an exemplar of Miami living.

The tower will rise 45 stories, offering 135 spacious 2- to 5-bedroom residences ranging from 1,102 to 4,786 sq ft, all with private elevator entries. Residences will feature chef's kitchens with Gaggenau appliances and master suites with separate his/hers closets and bathrooms.



III/ FLOOR PLANS

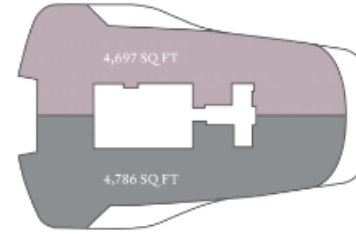
Una Residences offers multiple configurations ranging from 2 to 5 bedrooms. The building is divided into five sections:

- Southwest Residences
- Northwest Residences
- Southeast Residences
- Northeast Residences
- Vista Residences

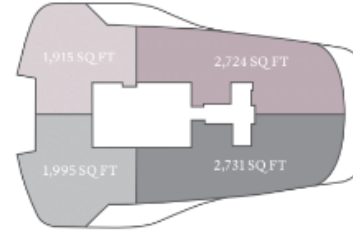
Let's see an example of each.



Residence Types



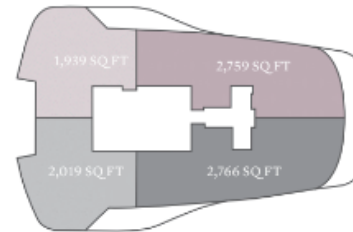
2 RESIDENCES
LEVELS 38 – 43
5 Bedrooms, 6.5 Baths, Den
4,697 SQ. FT. / 4,786 SQ. FT.



4 RESIDENCES
LEVELS 19 – 37

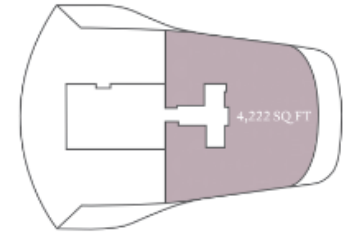
FLOORS 19 – 29
3 Bedrooms, 3.5 Baths
1,915 SQ. FT. / 1,995 SQ. FT.

4 Bedrooms, 4.5 Baths
2,724 SQ. FT. / 2,731 SQ. FT.

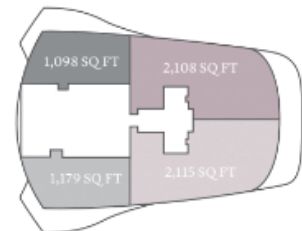


FLOORS 30 – 37
3 Bedrooms, 3.5 Baths
1,939 SQ. FT. / 2,019 SQ. FT.

4 Bedrooms, 5 Baths
2,759 SQ. FT. / 2,766 SQ. FT.



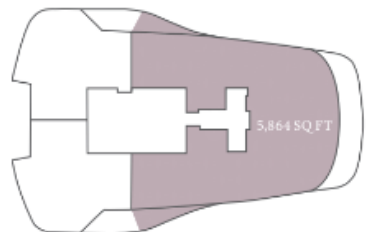
1 RESIDENCE
LEVELS 17 – 18
4 Bedrooms, 4.5 Baths
4,222 SQ. FT.



4 RESIDENCES
LEVELS 5 – 16

2 Bedrooms, 2 Baths
1,098 SQ. FT. / 1,179 SQ. FT.

3 Bedrooms, 3.5 Baths
2,108 SQ. FT. / 2,115 SQ. FT.



VISTA RESIDENCE
FLOORS 19 – 22
5 Bedrooms, 6.5 Baths, Family Room
5,864 SQ. FT.

Biscayne Bay

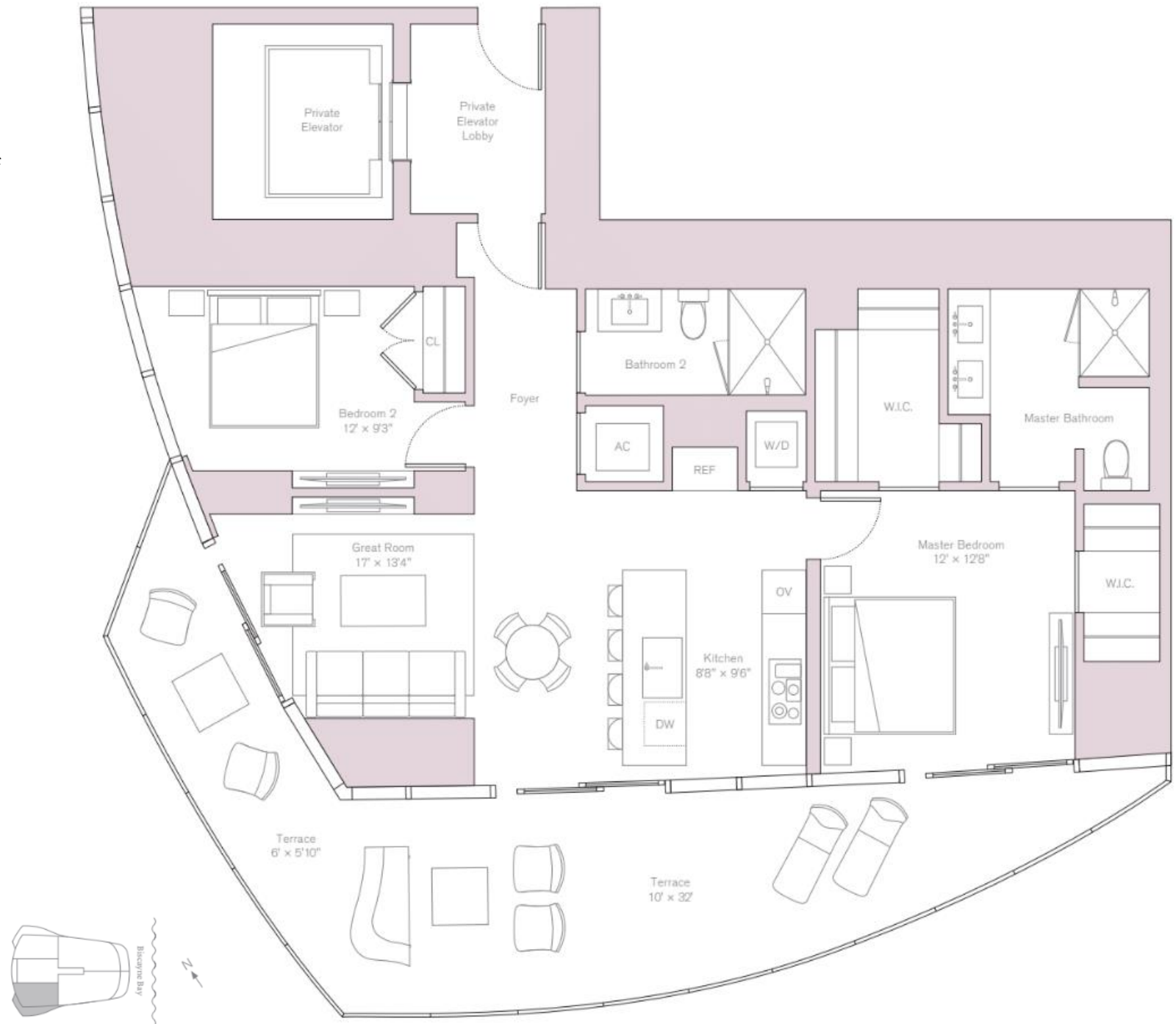
Biscayne Bay

Biscayne Bay

2 Bedrooms / 2 Bathrooms

The two-bedroom configuration has an interior of 1,102 sq ft and an exterior of 421 sq ft. They are located between the 5th and the 16th levels, and this unit is on the southwest side.

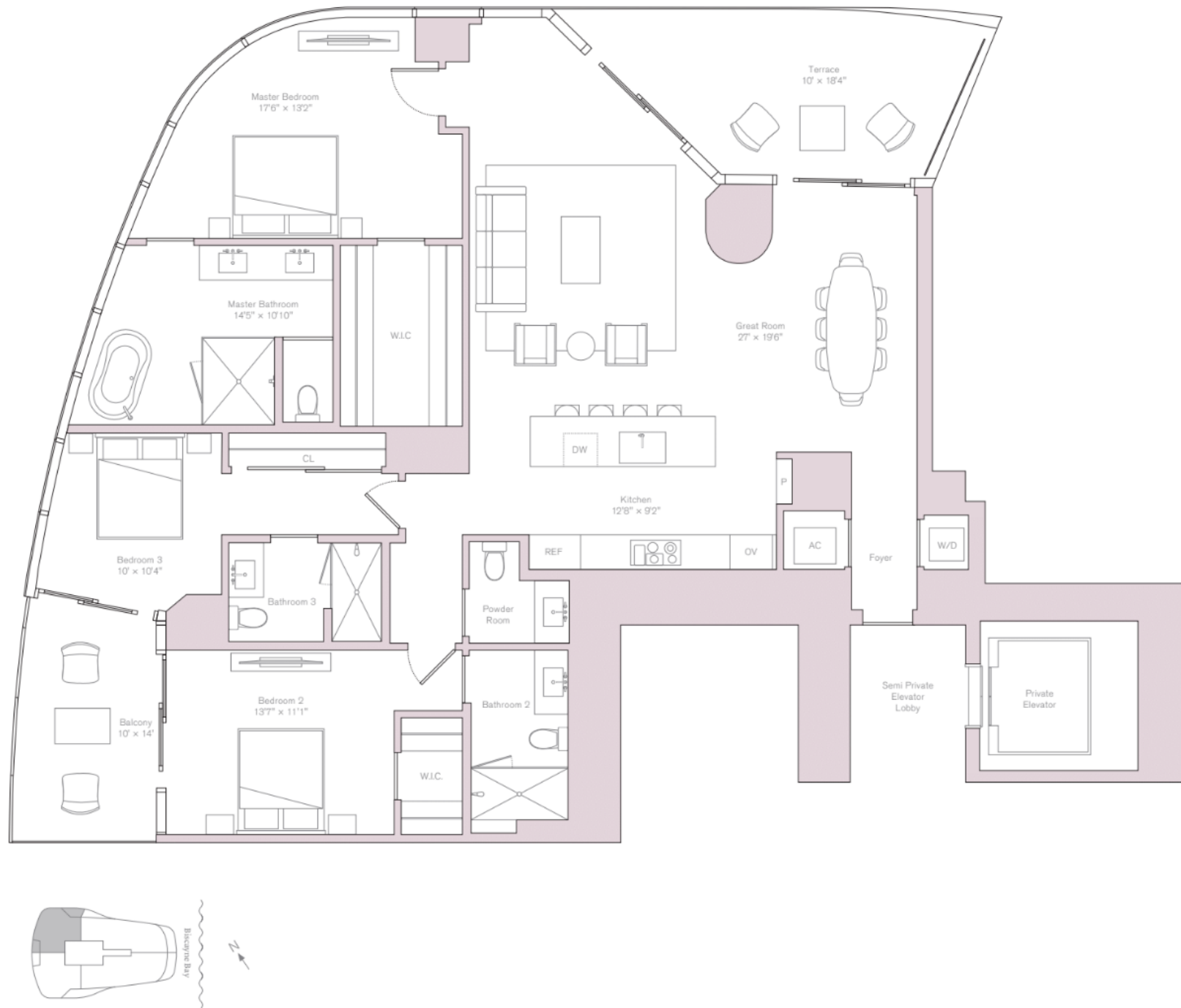
The foyer opens to the kitchen and the great room, which has direct access to the corner terrace. The master bedroom features two walk-in closets, a bathroom with a double sink and a shower, and direct access to the terrace. The second bedroom features a closet and a bathroom with a shower.



3 Bedrooms / 3.5 Bathrooms

The 3-bedroom configuration has an interior of 1,946 sq ft and an exterior of 313 sq ft. They are located between the 19th and the 37th levels, and this unit is on the northwest side.

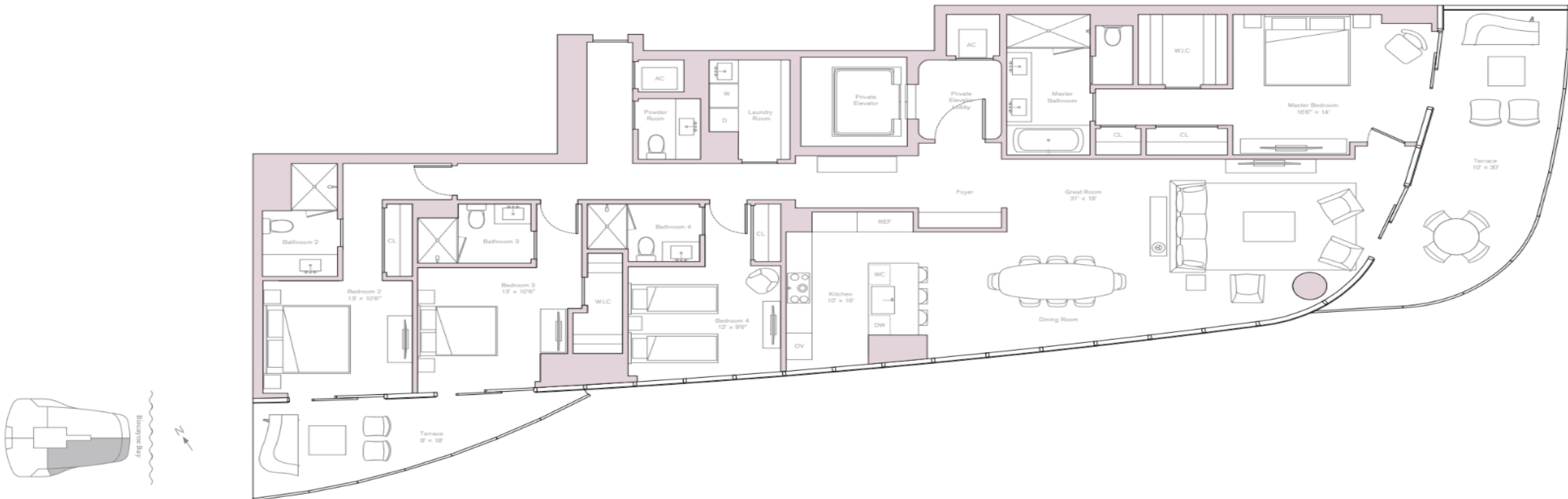
The foyer opens to the great room and the kitchen, which has direct access to the terrace. The master bedroom features a walk-in closet and a master bathroom with a bathtub and a shower. The two other bedrooms each have a closet, a private bathroom with a shower, and access to the balcony.



4 Bedrooms / 4.5 Bathrooms

The 4-bedroom configuration has an interior of 2,743 or 2,752 sq ft (depending on the side of the unit) and an exterior of 483 sq ft. They are located between the 23rd and the 37th levels. This unit is on the southeast side and features an interior of 2,752 sq ft.

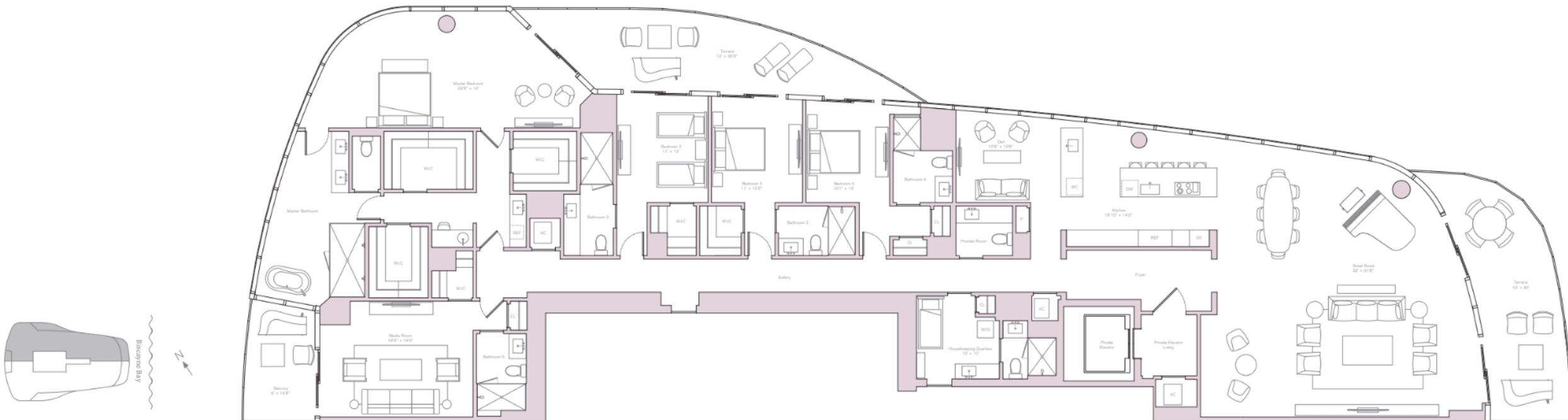
The foyer opens to the great room and the kitchen, which has direct access to the first terrace. The master bedroom features a walk-in closet, two closets, and a bathroom with a bathtub, a shower, and a toilet room. On the left side, a corridor leads to the laundry room, the powder room, and the three other bedrooms, each of which features a closet and a private bathroom with a shower. The second and third bedrooms both offer access to the second terrace.



5 Bedrooms / 6.5 Bathrooms

The 5-bedroom configuration is a penthouse with an interior of 4,725 or 4,735 sq ft (depending on the side of the unit) and an exterior of 796 sq ft. They are located between the 38th and the 43rd levels. This unit is on the northeast side and features an interior of 4,725 sq ft.

The foyer opens to the great room, the kitchen, and the den, which has direct access to the first terrace. The corridor leads to the powder room, the housekeeping quarters, and the bedrooms. The master bedroom features a space with three walk-in closets, a bathroom with a bathtub and a shower, and direct access to the second terrace. The other bedrooms each feature a closet (or a walk-in closet) and a bathroom with a shower. All the rooms have access to the terrace except the fifth bedroom (which can be transformed into a media room if needed), which has a private balcony. This unit offers panoramic views of the bay and the city.





/// AMENITIES

- 24-hour concierge
- Private marina
- Lobby lounge with adjoining terrace
- Valet service
- State-of-the-art fitness center
- Spa with steam room and sauna
- Movie theater
- Outdoor lap pool, bayfront pool, family pool, kids' splash pad
- Exclusive access to Grand Bay Club
- Party room with catering kitchen





IV/ WHY UNA RESIDENCES ?

Una is the first new condominium development to grace this private residential area of Brickell Waterfront in over a decade. From a distance, the iconic tower is recognizable by its smooth metallic surface and striking silhouette, which recalls the natural shape of a wave.

Una's setting in scenic Brickell Waterfront offers residents the natural beauty of South Florida as well as all the conveniences of downtown Miami. There's direct waterfront access, walking paths, public parks, bike routes, and brilliant landscapes all around. This is an idyllic residential neighborhood with an abundance of dining, cultural, and retail destinations. Plus, the area offers plenty of options for outdoor activities (running, walking, biking, or boating) and excellent local schools, making it ideal for families. Una's waterfront condos are also close to Brickell, Coconut Grove, and the beaches of Key Biscayne.

Una

Residences



GLOBALTY
INVESTMENT

