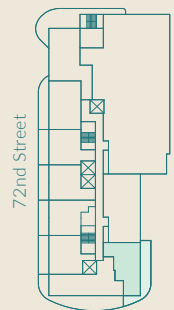


INTRACOASTAL/
BAY VIEW



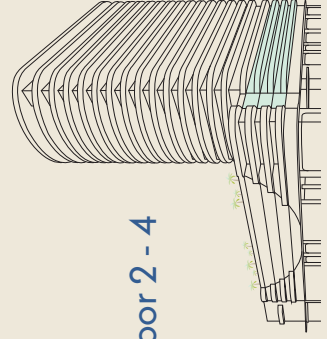
72nd Street

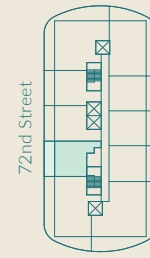
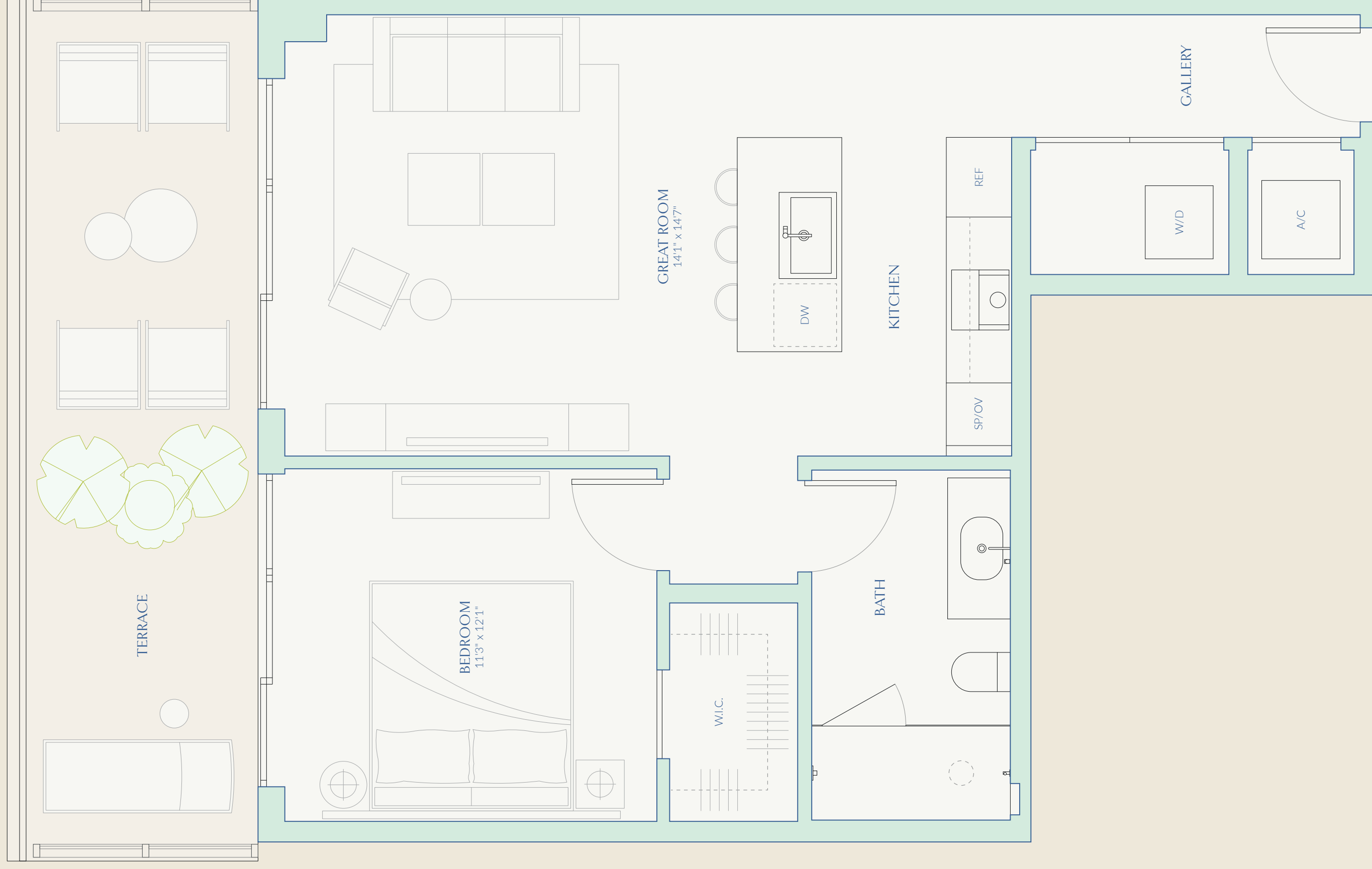


This is not intended to be an offer to sell, or solicitation to buy, condominium units to residents of any jurisdiction where prohibited by law, and your eligibility for purchase will depend upon your state of residency. The offering is made only by the prospectus for the condominium and no statement should be relied upon if not made in the prospectus. Stated interior square footage is measured to the exterior face of exterior walls and to the centerline of interior demising walls or to the exterior face of walls adjoining corridors or other common elements or shared facilities, without excluding areas that may be occupied by columns or other structural components. This method of measurement varies from, and is larger than, the dimensions that would be determined by using the standard method of measurement with actual construction. **ORAL REPRESENTATIONS CANNOT BE RELIED UPON AS CORRECTLY STATING THE REPRESENTATIONS OF THE DEVELOPER. FOR CORRECT REPRESENTATIONS, MAKE REFERENCE TO THIS BROCHURE AND TO THE DOCUMENTS REQUIRED BY SECTION 718.5.03, FLORIDA STATUTES, TO BE FURNISHED BY A DEVELOPER TO A BUYER OR LESSEE.**

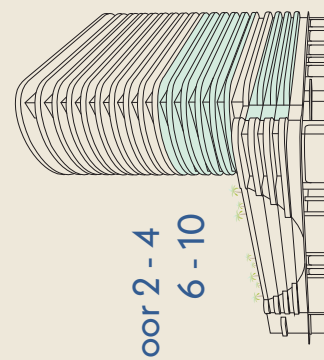


Floor 2 - 4



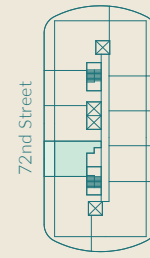
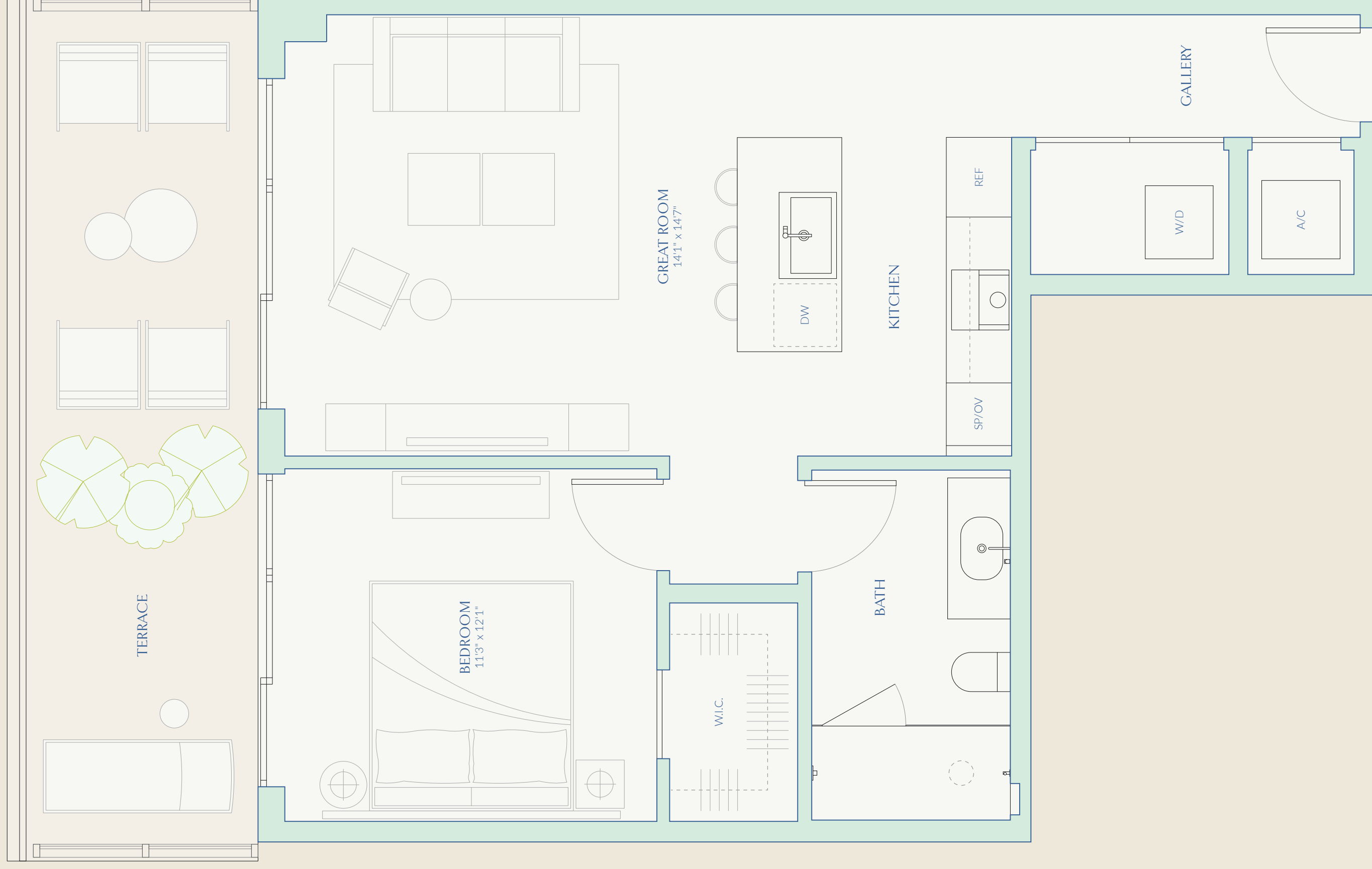


This is not intended to be an offer to sell, or solicitation to buy, condominium units in any jurisdiction where prohibited by law, and your eligibility for purchase will depend upon your state of residency. The offering is made only by the prospectus for the condominium and no statement should be relied upon if not made in the prospectus. Stated interior square footage is measured to the exterior face of exterior walls and to the centerline of interior demising walls or to the exterior face of exterior walls and to the centerline of interior demising walls or to the exterior face of exterior walls, without excluding areas that may be occupied by columns or other structural components. This method of measurement varies from, and is larger than, the dimensions that would be determined by using the standard method of measurement. Measurements are for informational purposes only and do not constitute a representation of actual dimensions. MEASUREMENTS ARE FOR INFORMATIONAL PURPOSES ONLY AND SHOULD NOT BE RELIED UPON AS CORRECT. MAKE REFERENCE TO THIS BROCHURE AND TO THE DOCUMENTS REQUIRED BY SECTION 718.5.03, FLORIDA STATUTES, TO BE FURNISHED BY A DEVELOPER TO A BUYER OR LESSEE, WITH ACTUAL CONSTRUCTION. ORAL REPRESENTATIONS CANNOT BE RELIED UPON AS CORRECTLY STATING THE REPRESENTATIONS OF THE DEVELOPER FOR CORRECT REPRESENTATIONS.

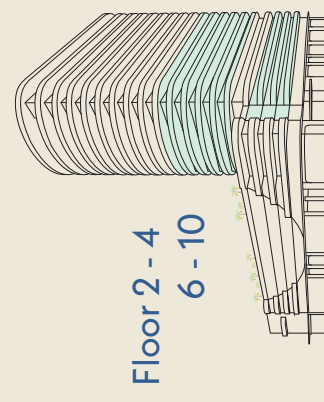


Floor 2 - 4
6 - 10





This is not intended to be an offer to sell, or solicitation to buy, condominium units in any jurisdiction where prohibited by law, and your eligibility for purchase will depend upon your state of residency. The offering is made only by the prospectus for the condominium and no statement should be relied upon if not made in the prospectus. Stated interior square footage is measured to the exterior face of exterior walls and to the centerline of interior demising walls or to the exterior face of exterior walls and to the centerline of interior demising walls or to the exterior face of exterior walls, without excluding areas that may be occupied by columns or other structural components. This method of measurement varies from, and is larger than, the dimensions that would be determined by using the standard method of measurement. Measurements are for informational purposes only and do not constitute an offer. MEASUREMENTS ARE APPROXIMATE AND SHOULD BE VERIFIED BY THE BUYER. ORAL REPRESENTATIONS CANNOT BE RELIED UPON AS CORRECTLY STATING THE REPRESENTATIONS OF THE DEVELOPER. FOR CORRECT REPRESENTATIONS, MAKE REFERENCE TO THIS BROCHURE AND TO THE DOCUMENTS REQUIRED BY SECTION 718.5.03, FLORIDA STATUTES, TO BE FURNISHED BY A DEVELOPER TO A BUYER OR LESSEE, WITH ACTUAL CONSTRUCTION.



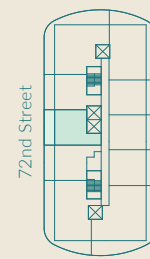
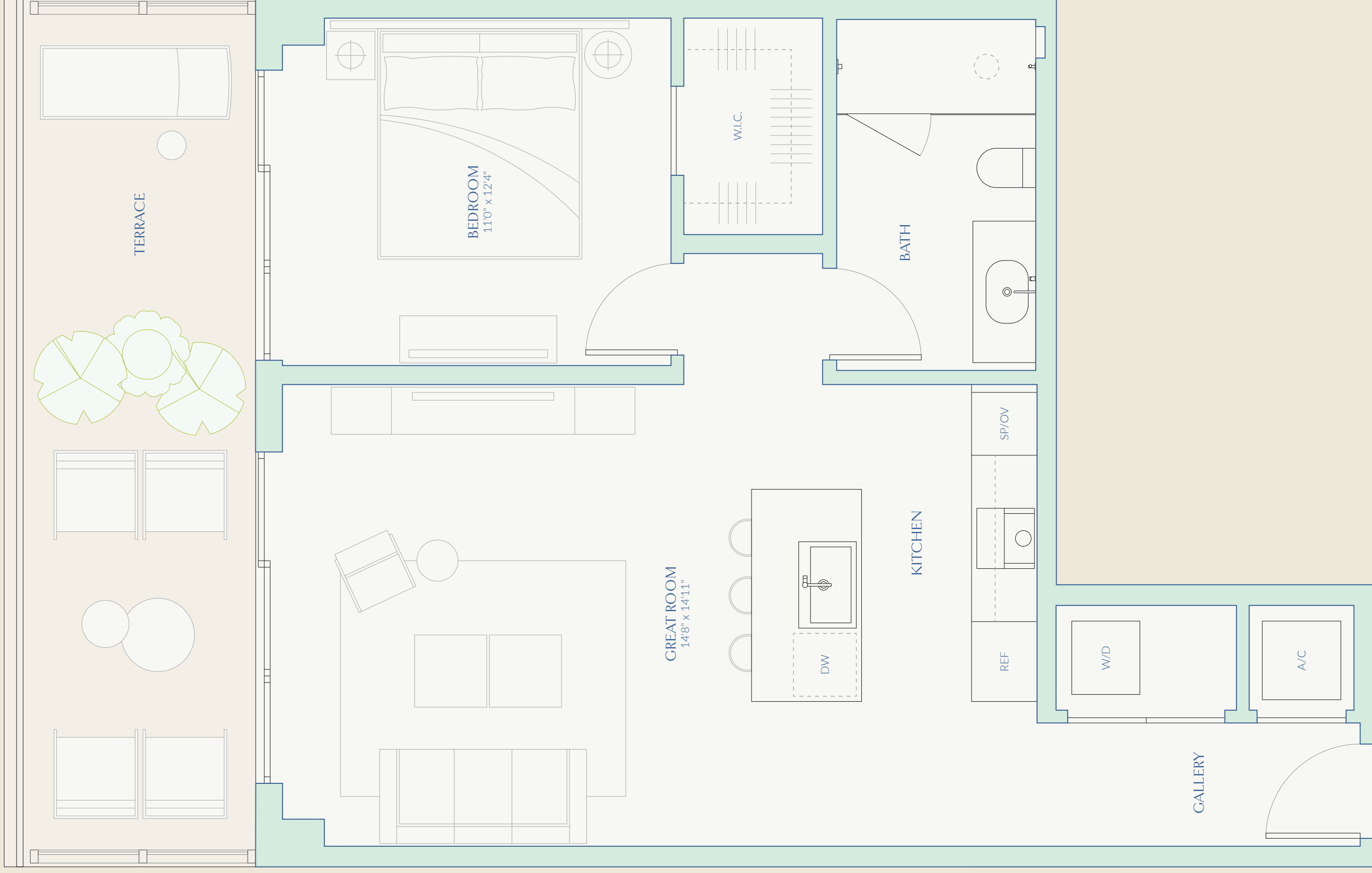
A4

ONE BEDROOM
ONE BATH

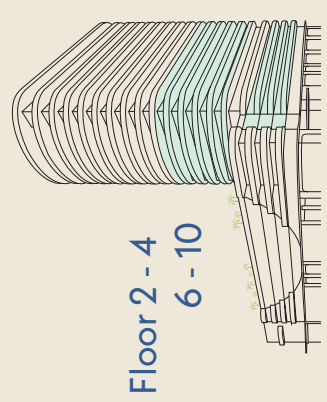
INTERIOR 781 SF | 72.6 SM
EXTERIOR 216 SF | 20.1 SM
TOTAL 997 SF | 92.6 SM

72 CARLYLE

MIAMI BEACH RESIDENCES
By Piero Lissoni



This is not intended to be an offer to sell, or solicitation to buy, or advertisement for the sale of any real estate. The offering is made only by the prospectus for the condominium and no statement should be relied upon if not made in the prospectus. Stated interior square footage is measured to the exterior face of exterior walls and to the centerline of interior demising walls or to the exterior face of exterior walls and to the centerline of interior demising walls, and is larger than the dimensions that would be determined by using the exterior face of exterior walls and to the centerline of interior demising walls. ORAL REPRESENTATIONS CANNOT BE RELIED UPON AS CORRECTLY STATING THE REPRESENTATIONS OF THE DEVELOPER FOR CORRECT REPRESENTATIONS. MAKE REFERENCE TO THIS BROCHURE AND TO THE DOCUMENTS REQUIRED BY SECTION 718.5.03, FLORIDA STATUTES, TO BE FURNISHED BY A DEVELOPER TO A BUYER OR LESSEE, WITH ACTUAL CONSTRUCTION.



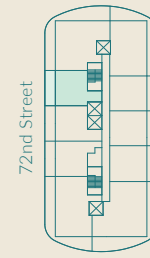
Floor 2 - 4
6 - 10

A5

ONE BEDROOM
ONE BATH

INTERIOR 770 SF | 71.5 SM
EXTERIOR 216 SF | 20.1 SM
TOTAL 986 SF | 91.6 SM

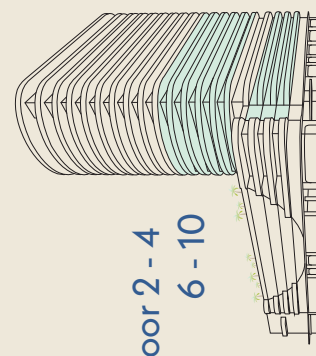
72
CARLYLE
MIAMI BEACH RESIDENCES
By Piero Lissoni



This is not intended to be an offer to sell, or solicitation to buy, condominium units to residents of any jurisdiction where prohibited by law, and your eligibility for purchase will depend upon your state of residency. The offering is made only by the prospectus for the condominium and no statement should be relied upon if not made in the prospectus. Stated interior square footage is measured to the exterior face of exterior walls and to the centerline of interior demising walls or to the exterior face of exterior walls, without excluding corridors or shared facilities, without excluding areas that may be occupied by columns or other structural components. This method of measurement varies from, and is larger than, the dimensions that would be determined by using the standard method of measurement. **ORAL REPRESENTATIONS CANNOT BE RELIED UPON AS CORRECTLY STATING THE REPRESENTATIONS OF THE DEVELOPER. FOR CORRECT REPRESENTATIONS, MAKE REFERENCE TO THIS BROCHURE AND TO THE DOCUMENTS REQUIRED BY SECTION 718.5.03, FLORIDA STATUTES, TO BE FURNISHED BY A DEVELOPER TO A BUYER OR LESSEE, WITH ACTUAL CONSTRUCTION.**



Floor 2 - 4
6 - 10

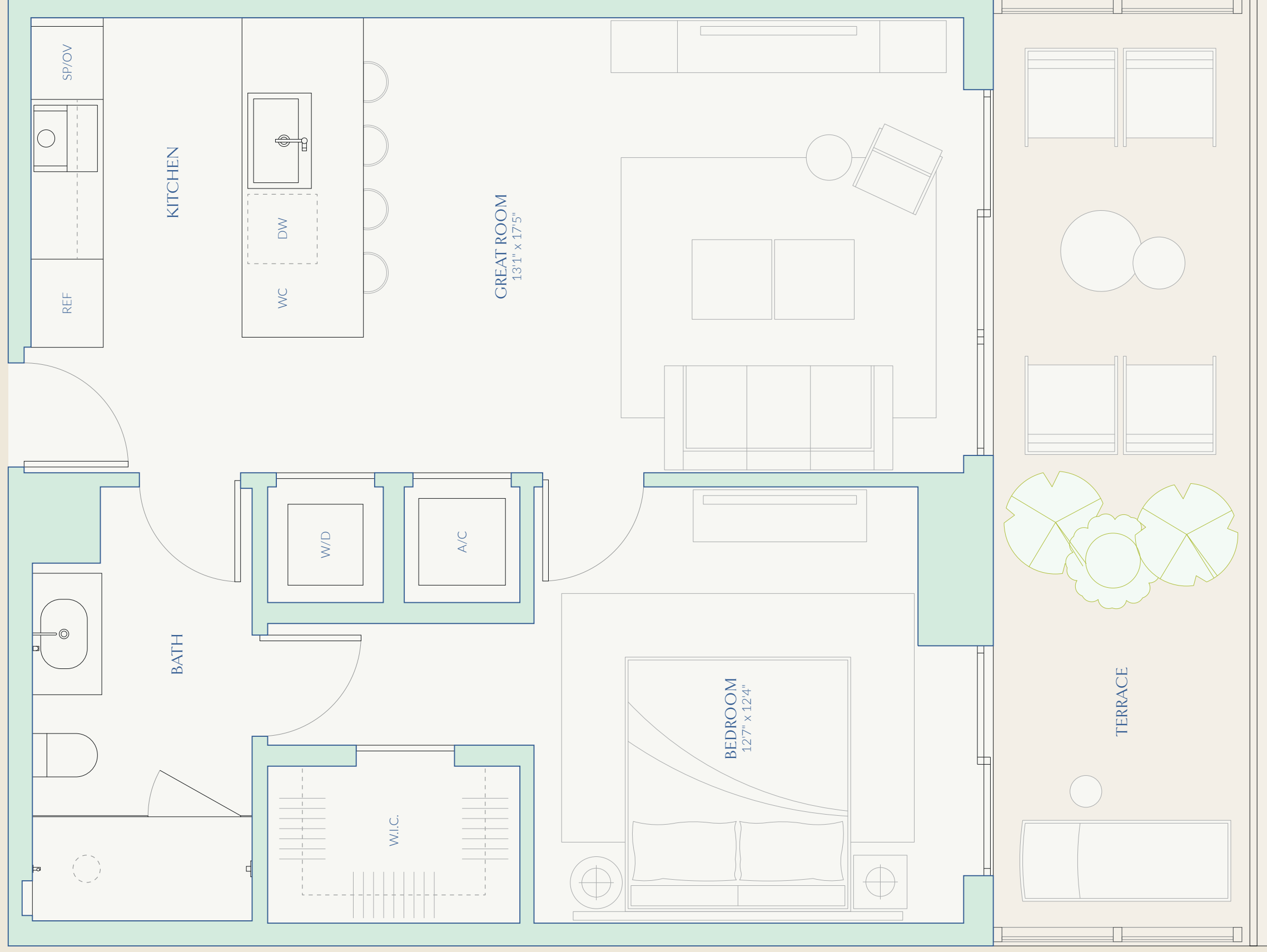


A7

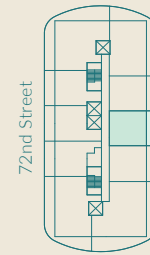
ONE BEDROOM
ONE BATH

INTERIOR 751 SF | 69.8 SM
EXTERIOR 214 SF | 19.9 SM
TOTAL 965 SF | 89.7 SM

72
CARLYLE
MIAMI BEACH RESIDENCES
By Piero Lissoni



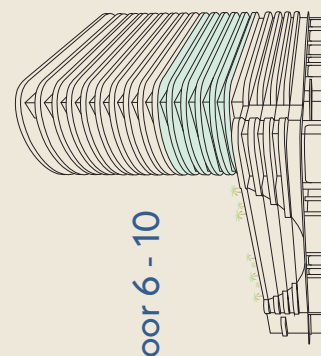
INTRACOASTAL
A VIEW



72nd Street

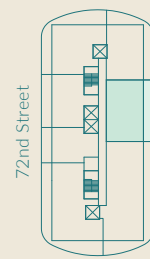
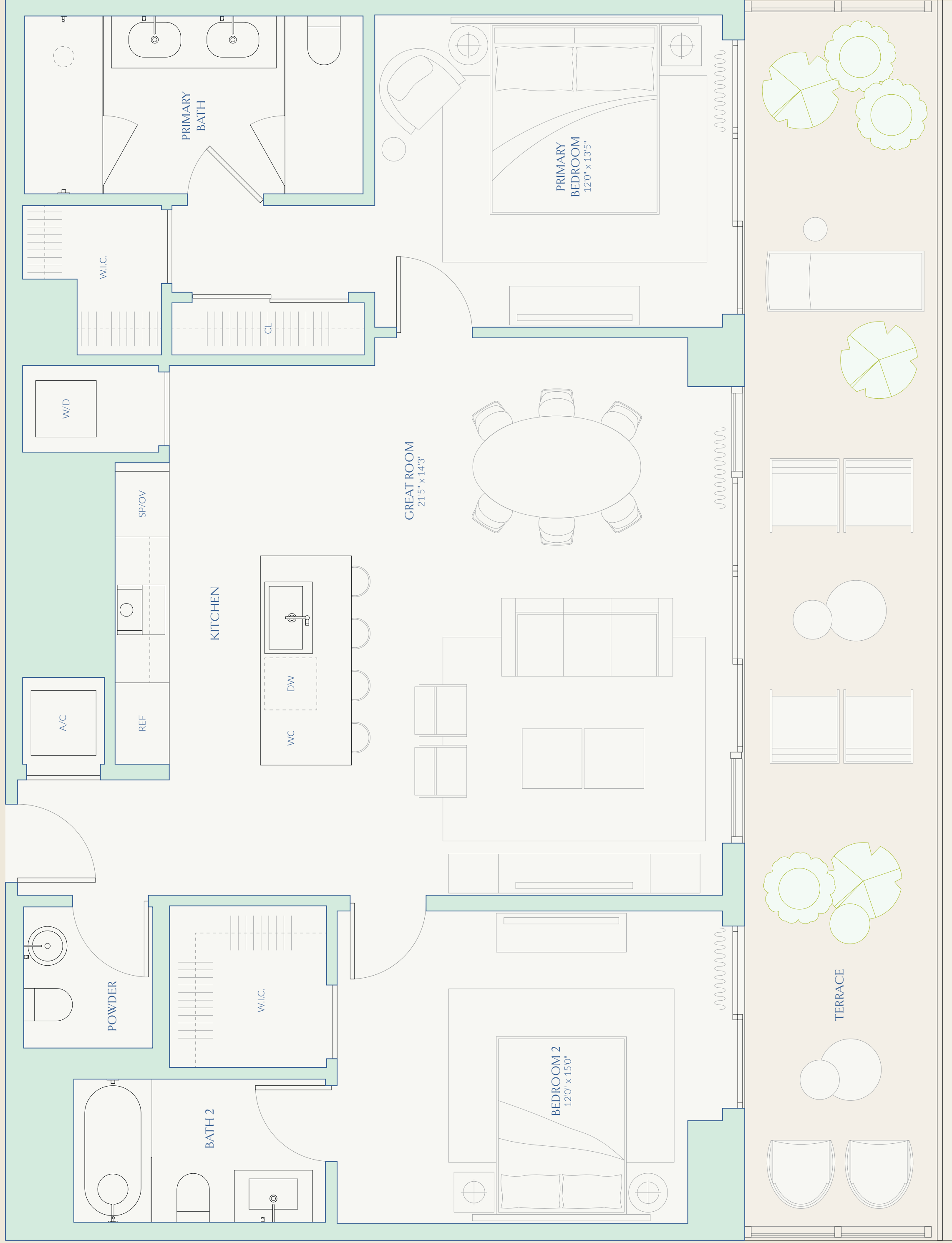


This is not intended to be an offer to sell, or solicitation to buy, condominium units in jurisdictions where prohibited by law, and your eligibility for purchase will depend upon your state of residency. The offering is made only by the prospectus for the condominium and no statement should be relied upon if not made in the prospectus. Stated interior square footage is measured to the exterior face of exterior walls and to the centerline of interior demising walls or to the exterior face of exterior walls, without excluding corridors or shared facilities, without excluding areas that may be occupied by columns or other structural components. This method of measurement varies from, and is larger than, the dimensions that would be determined by using the standard method of measurement. **ORAL REPRESENTATIONS CANNOT BE RELIED UPON AS CORRECT REPRESENTATIONS OF THE DEVELOPER. FOR CORRECT REPRESENTATIONS, MAKE REFERENCE TO THIS BROCHURE AND TO THE DOCUMENTS REQUIRED BY SECTION 718.5.03, FLORIDA STATUTES, TO BE FURNISHED BY A DEVELOPER TO A BUYER OR LESSEE.**



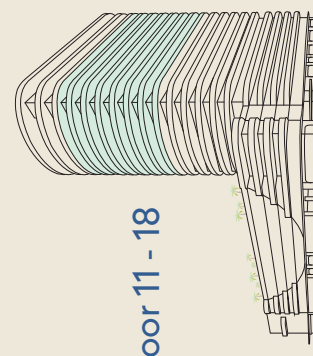
Floor 6 - 10





72nd Street

INTRACOASTAL
A VIEW



Floor 11 - 18



This is not intended to be an offer to sell, or solicitation to buy, condominium units in jurisdictions where prohibited by law, and your eligibility for purchase will depend upon your state of residency. The offering is made only by the prospectus for the condominium and no statement should be relied upon if not made in the prospectus. Stated interior square footage is measured to the exterior face of exterior walls and to the centerline of interior demising walls or to the exterior face of interior demising walls, and is larger than, the dimensions that would be determined by using the standard method of measurement. The method of measurement varies from, and is larger than, the dimensions that would be determined by using the standard method of measurement. ORAL REPRESENTATIONS CANNOT BE RELIED UPON AS CORRECT REPRESENTATIONS OF THE DEVELOPER. MAKE REFERENCE TO THIS BROCHURE AND TO THE DOCUMENTS REQUIRED BY SECTION 718.5.03, FLORIDA STATUTES, TO BE FURNISHED BY A DEVELOPER TO A BUYER OR LESSEE, WITH ACTUAL CONSTRUCTION.



NORTH

W E

S