

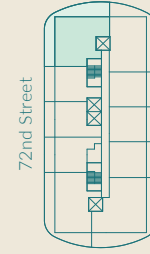
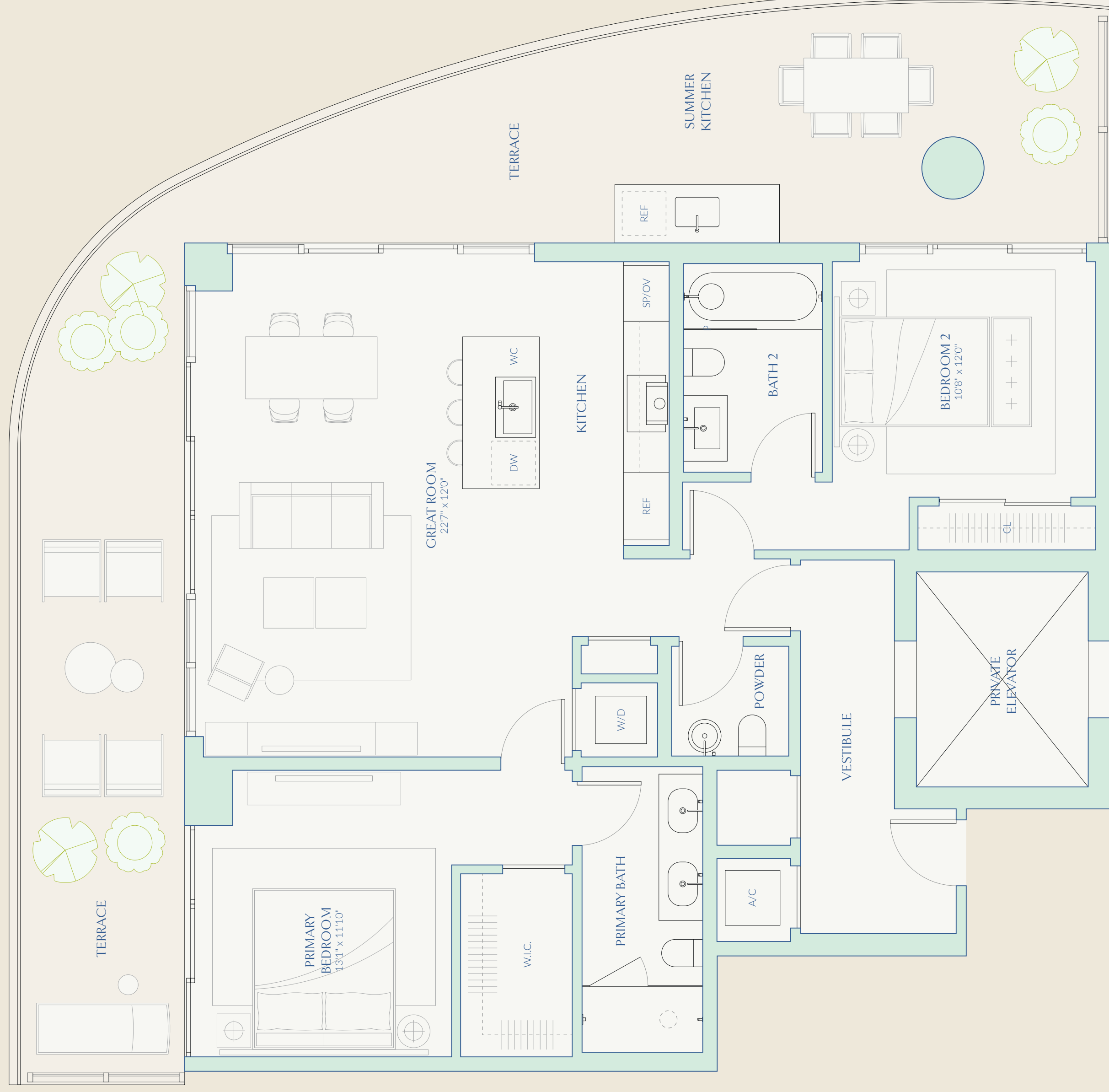
B6

TWO BEDROOMS
TWO BATHS
ONE POWDER ROOM

INTERIOR 1,354 SF | 125.8 SM
EXTERIOR 686 SF | 63.7 SM
TOTAL 2,040 SF | 189.5 SM

PAN
OCEAN VIEW

72
CARLYLE
MIAMI BEACH RESIDENCES
By Piero Lissoni



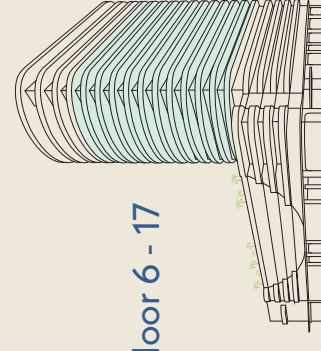
72nd Street



This is not intended to be an offer to sell, or solicitation to buy, condominium units in residents of any jurisdiction where prohibited by law, and your eligibility for purchase will depend upon your state of residency. The offering is made only by the prospectus for the condominium and no statement should be relied upon if not made in the prospectus. Stated interior square footage is measured to the exterior face of exterior walls and to the centerline of interior demising walls or to the exterior face of exterior walls, whichever is greater. Stated exterior square footage is measured to the exterior face of exterior walls. Dimensions are approximate and do not constitute a contract. All measurements are taken from finished surfaces. All measurements are taken from finished surfaces. All measurements are taken from finished surfaces. **ORAL REPRESENTATIONS CANNOT BE RELIED UPON AS CORRECTLY STATING THE REPRESENTATIONS OF THE DEVELOPER. FOR CORRECT REPRESENTATIONS, MAKE REFERENCE TO THIS BROCHURE AND TO THE DOCUMENTS REQUIRED BY SECTION 718.5.03, FLORIDA STATUTES, TO BE FURNISHED BY A DEVELOPER TO A BUYER OR LESSEE.**



Floor 6 - 17



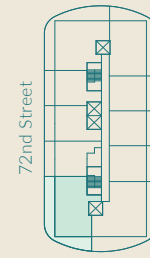
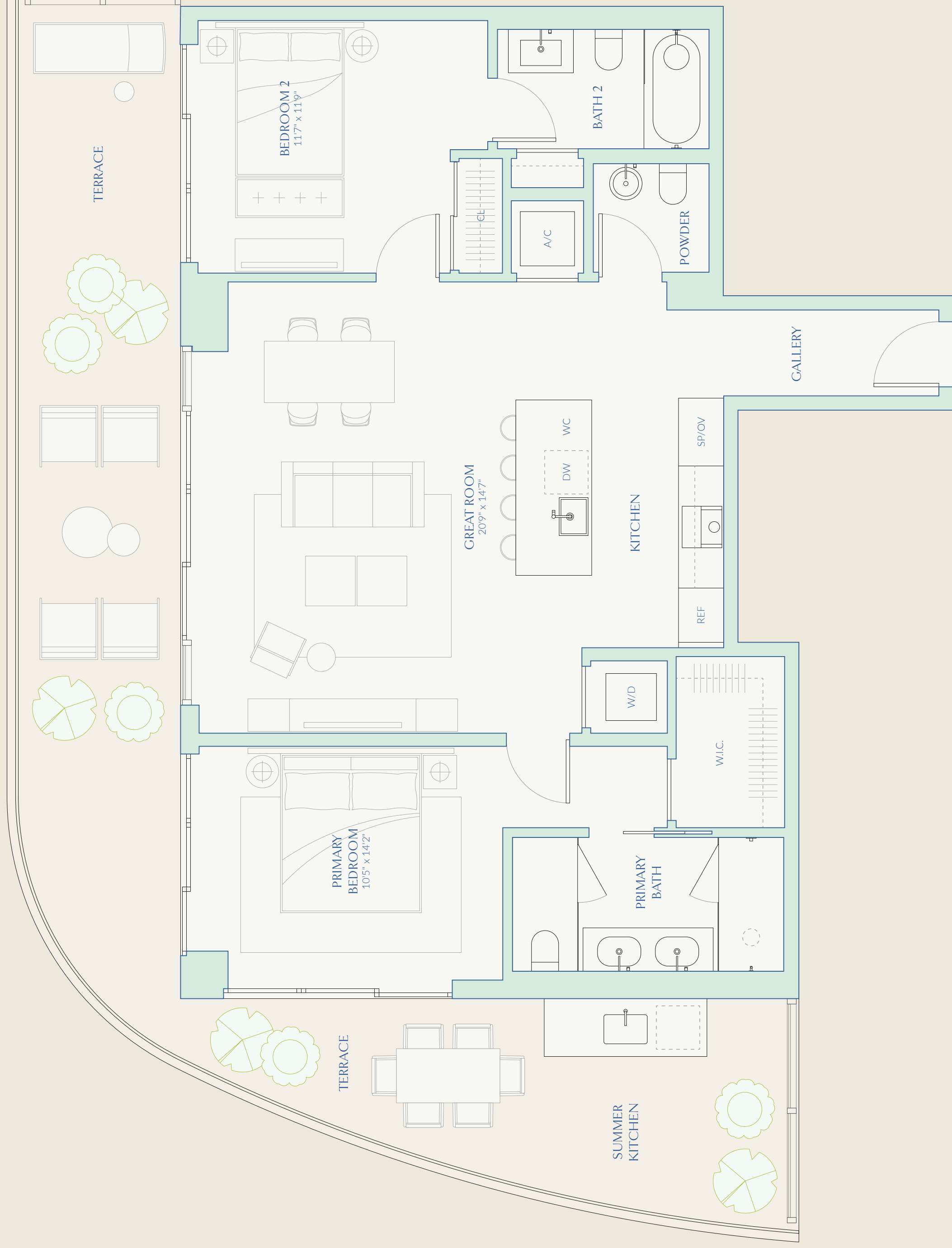
B5

TWO BEDROOMS
TWO BATHS
ONE POWDER ROOM

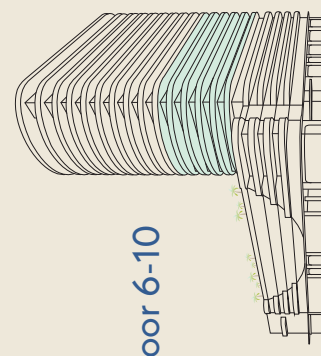
INTERIOR 1,268 SF | 117.8 SM
EXTERIOR 597 SF | 55.5 SM
TOTAL 1,865 SF | 173.3 SM

72
CARLYLE
MIAMI BEACH RESIDENCES
By Piero Lissoni

PARK &
OCEAN VIEW



This is not intended to be an offer to sell, or solicitation to buy, condominium units in residents of any jurisdiction where prohibited by law, and your eligibility for purchase will depend upon your state of residency. The offering is made only by the prospectus for the condominium and no statement should be relied upon if not made in the prospectus. Stated interior square footage is measured to the exterior face of exterior walls and to the centerline of interior demising walls or to the exterior face of interior demising walls or to the exterior face of exterior walls, whichever is the most favorable to the buyer. Stated exterior square footage is measured to the exterior face of exterior walls. All measurements are approximate and should not be relied upon for construction purposes. ORAL REPRESENTATIONS CANNOT BE RELIED UPON AS CORRECTLY STATING THE REPRESENTATIONS OF THE DEVELOPER. FOR CORRECT REPRESENTATIONS, MAKE REFERENCE TO THIS BROCHURE AND TO THE DOCUMENTS REQUIRED BY SECTION 718.5.03, FLORIDA STATUTES, TO BE FURNISHED BY A DEVELOPER TO A BUYER OR LESSEE, WITH ACTUAL CONSTRUCTION.



Floor 6-10

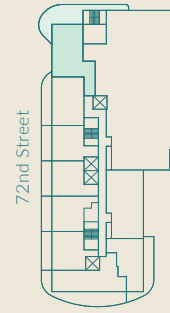
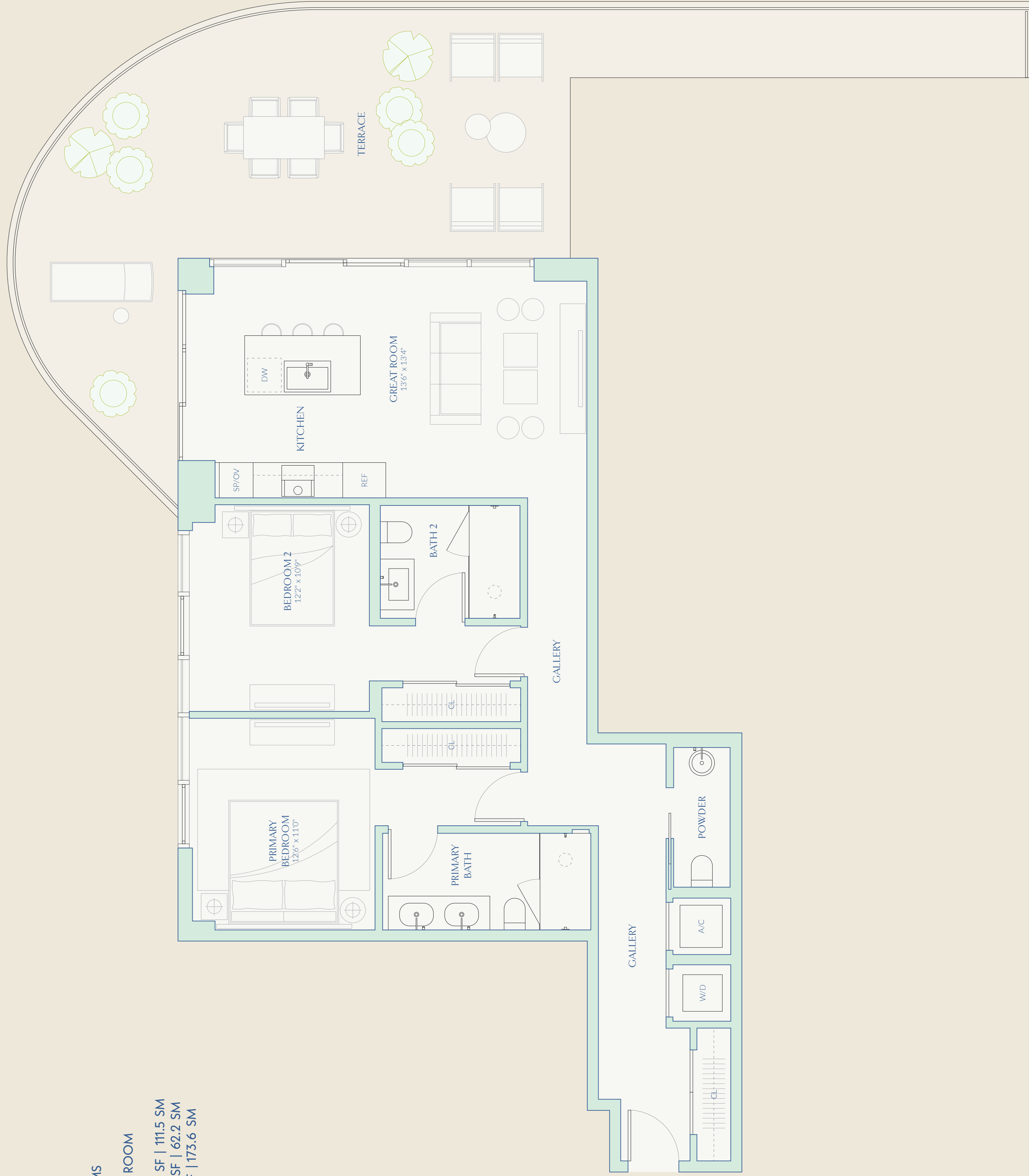


B3

TWO BEDROOMS
TWO BATHS
ONE POWDER ROOM

INTERIOR 1,200 SF | 111.5 SM
EXTERIOR 669 SF | 62.2 SM
TOTAL 1,869 SF | 173.6 SM

72
CARLYLE
MIAMI BEACH RESIDENCES
By Piero Lissoni

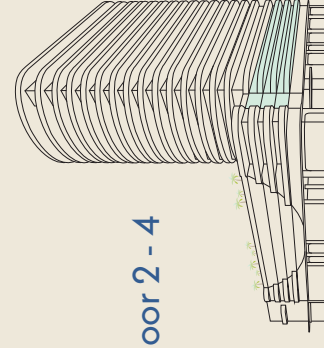


72nd Street



EQUAL HOUSING
OPPORTUNITY

This is not intended to be an offer to sell, or solicitation to buy, condominium units in jurisdictions where prohibited by law, and your eligibility for purchase will depend upon your state of residency. The offering is made only by the prospectus for the condominium and no statement should be relied upon if not made in the prospectus. Stated interior square footage is measured to the exterior face of exterior walls and to the centerline of interior demising walls or to the exterior face of interior demising walls or to the exterior face of exterior walls and to the centerline of interior demising walls or to the exterior face of exterior walls. Stated exterior square footage is measured to the exterior face of exterior walls. All measurements are approximate and should not be relied upon for construction purposes. ORAL REPRESENTATIONS CANNOT BE RELIED UPON AS CORRECTLY STATING THE REPRESENTATIONS OF THE DEVELOPER. FOR CORRECT REPRESENTATIONS, MAKE REFERENCE TO THIS BROCHURE AND TO THE DOCUMENTS REQUIRED BY SECTION 718.5.03, FLORIDA STATUTES, TO BE FURNISHED BY A DEVELOPER TO A BUYER OR LESSEE, WITH ACTUAL CONSTRUCTION.



Floor 2 - 4



NORTH

W E
S

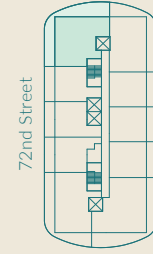
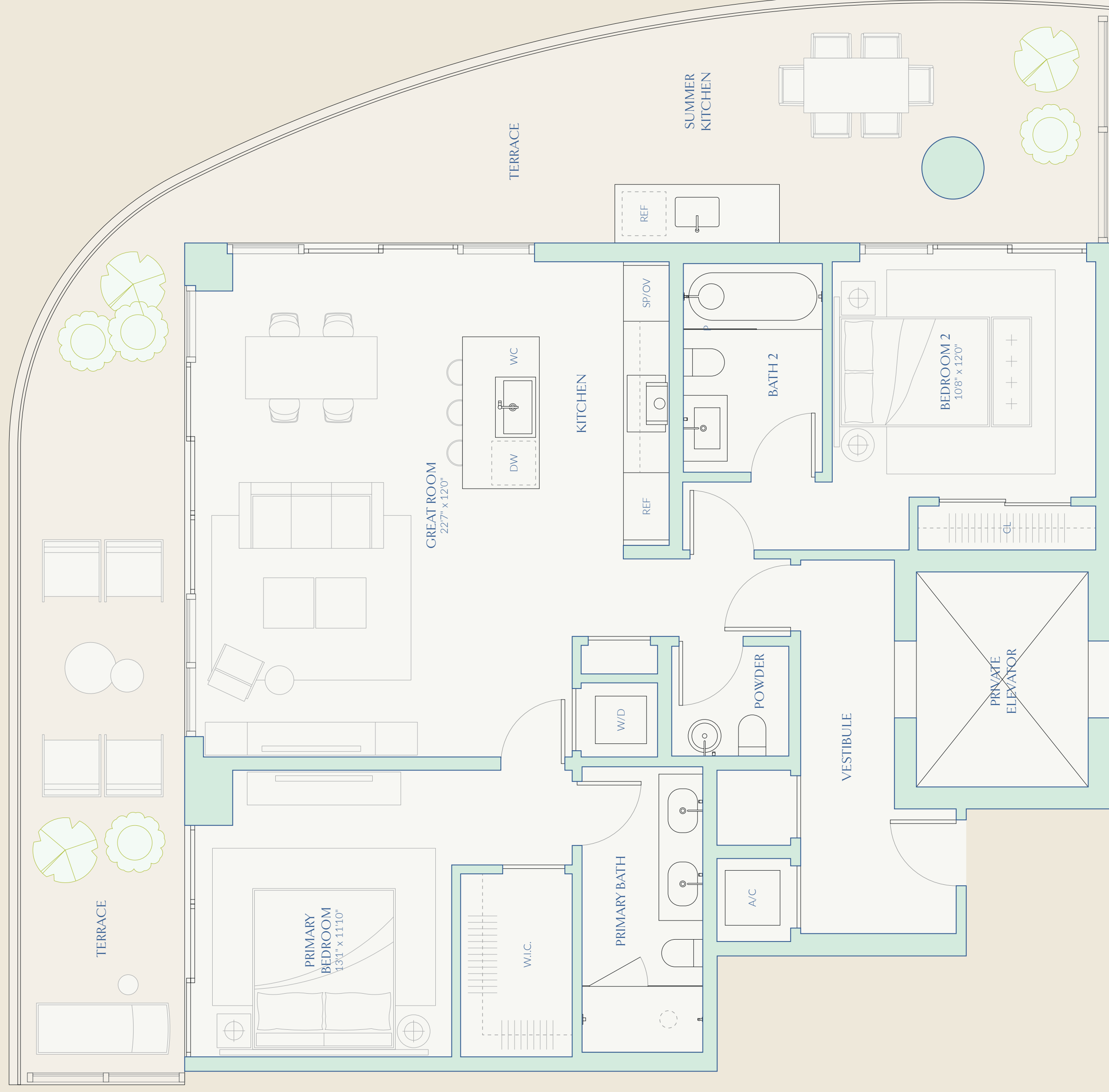
B6

TWO BEDROOMS
TWO BATHS
ONE POWDER ROOM

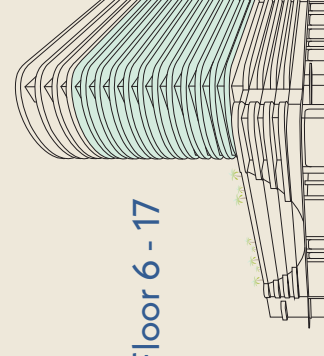
INTERIOR 1,354 SF | 125.8 SM
EXTERIOR 686 SF | 63.7 SM
TOTAL 2,040 SF | 189.5 SM

PAN
OCEAN VIEW

72
CARLYLE
MIAMI BEACH RESIDENCES
By Piero Lissoni



This is not intended to be an offer to sell, or solicitation to buy, condominium units in residents of any jurisdiction where prohibited by law, and your eligibility for purchase will depend upon your state of residency. The offering is made only by the prospectus for the condominium and no statement should be relied upon if not made in the prospectus. Stated interior square footage is measured to the exterior face of exterior walls and to the centerline of interior demising walls or to the exterior face of exterior demising walls, and is larger than the dimensions that would be determined by using the floor-to-floor method. Actual interior square footage may vary from the stated square footage. ORAL REPRESENTATIONS CANNOT BE RELIED UPON AS CORRECTLY STATING THE REPRESENTATIONS OF THE DEVELOPER. FOR CORRECT REPRESENTATIONS, MAKE REFERENCE TO THIS BROCHURE AND TO THE DOCUMENTS REQUIRED BY SECTION 718.5.03, FLORIDA STATUTES, TO BE FURNISHED BY A DEVELOPER TO A BUYER OR LESSEE.



Floor 6 - 17



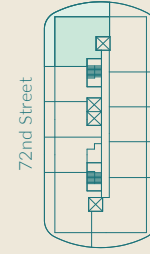
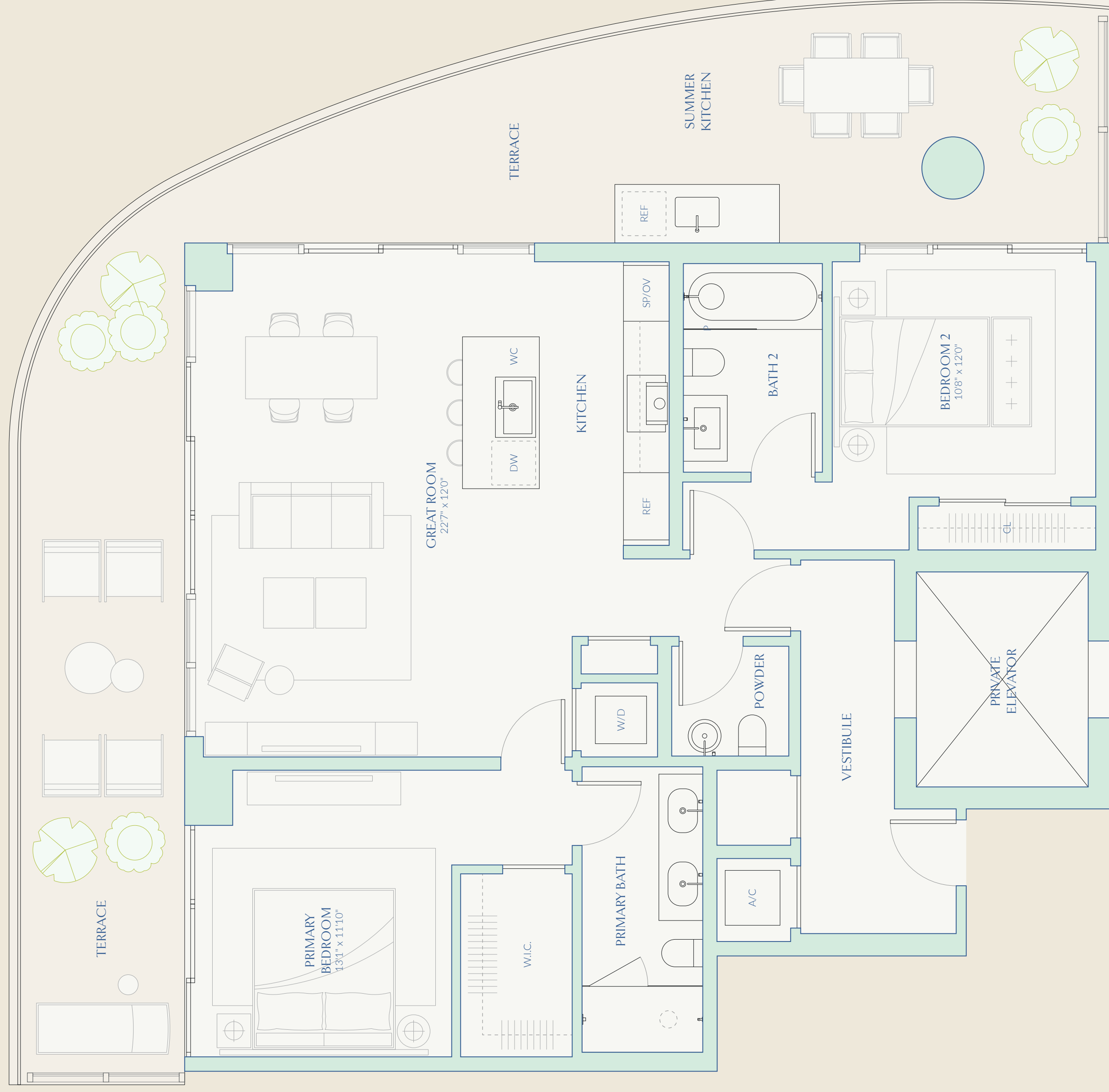
B6

TWO BEDROOMS
TWO BATHS
ONE POWDER ROOM

INTERIOR 1,354 SF | 125.8 SM
EXTERIOR 686 SF | 63.7 SM
TOTAL 2,040 SF | 189.5 SM

PAN
OCEAN VIEW

72
CARLYLE
MIAMI BEACH RESIDENCES
By Piero Lissoni



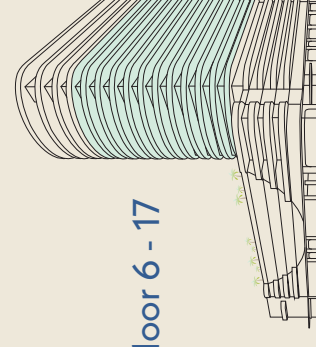
72nd Street



This is not intended to be an offer to sell, or solicitation to buy, condominium units in residents of any jurisdiction where prohibited by law, and your eligibility for purchase will depend upon your state of residency. The offering is made only by the prospectus for the condominium and no statement should be relied upon if not made in the prospectus. Stated interior square footage is measured to the exterior face of exterior walls and to the centerline of interior demising walls or to the exterior face of exterior walls, whichever is greater. Stated exterior square footage is measured to the exterior face of exterior walls. Dimensions are approximate and do not constitute an offer. All measurements are based on the current plans and are subject to change without notice. ORAL REPRESENTATIONS CANNOT BE RELIED UPON AS CORRECTLY STATING THE REPRESENTATIONS OF THE DEVELOPER. FOR CORRECT REPRESENTATIONS, MAKE REFERENCE TO THIS BROCHURE AND TO THE DOCUMENTS REQUIRED BY SECTION 718.5.03, FLORIDA STATUTES, TO BE FURNISHED BY A DEVELOPER TO A BUYER OR LESSEE.



Floor 6 - 17



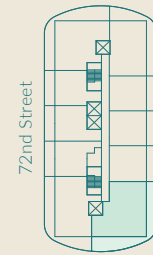
B4

TWO BEDROOMS
TWO BATHS
ONE POWDER ROOM

INTERIOR 1,403 SF | 130.3 SM
EXTERIOR 698 SF | 64.8 SM
TOTAL 2,101 SF | 195.2 SM



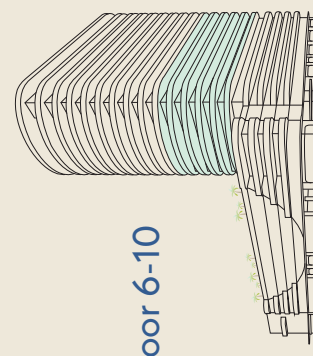
INTRACASTAL/
A VIEW



72nd Street



This is not intended to be an offer to sell, or solicitation to buy, condominium units in residents of any jurisdiction where prohibited by law, and your eligibility for purchase will depend upon your state of residency. The offering is made only by the prospectus for the condominium and no statement should be relied upon if not made in the prospectus. Stated interior square footage is measured to the exterior face of exterior walls and to the centerline of interior demising walls or to the exterior face of interior demising walls, and is larger than, the dimensions that would be determined by using the exterior face of exterior walls and to the centerline of interior demising walls. ORAL REPRESENTATIONS CANNOT BE RELIED UPON AS CORRECTLY STATING THE REPRESENTATIONS OF THE DEVELOPER. MAKE REFERENCE TO THIS BROCHURE AND TO THE DOCUMENTS REQUIRED BY SECTION 718.5.03, FLORIDA STATUTES, TO BE FURNISHED BY A DEVELOPER TO A BUYER OR LESSEE, WITH ACTUAL CONSTRUCTION.



Floor 6-10

