



ALHAMBRA PARC
CORAL GABLES



RESIDENCE 01

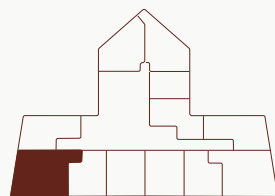
LEVEL 4

- +
- 3 BED + 3.5 BATH
- STUDIO/DEN
- 2 BALCONIES

INTERIOR: 1,980 SQ. FT. / 184 SQ. MT.
BALCONY 1: 496 SQ. FT. / 46 SQ. MT.
BALCONY 2: 369 SQ. FT. / 34 SQ. MT.
TOTAL: 2,845 SQ. FT. / 264 SQ. MT.

+

The drawings, specifications, dimensions and any other information in these floor plans are conceptual and for illustration purposes only and should not be relied upon. References should be made to accurate detailed information of the floor plans including calculation of square footage, dimensions, and other information.





ALHAMBRA PARC
CORAL GABLES



RESIDENCE 01

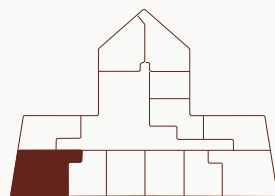
LEVEL 4

- +
- 3 BED + 3.5 BATH
- STUDIO/DEN
- 2 BALCONIES

INTERIOR: 1,980 SQ. FT. / 184 SQ. MT.
BALCONY 1: 496 SQ. FT. / 46 SQ. MT.
BALCONY 2: 369 SQ. FT. / 34 SQ. MT.
TOTAL: 2,845 SQ. FT. / 264 SQ. MT.

+

The drawings, specifications, dimensions and any other information in these floor plans are conceptual and for illustration purposes only and should not be relied upon. References should be made to accurate detailed information of the floor plans including calculation of square footage, dimensions, and other information.





ALHAMBRA PARC
CORAL GABLES



RESIDENCE 02

LEVEL 4



2 BED + 2.5 BATH

2 BALCONIES

INTERIOR: 1,347 SQ. FT. / 125.14 SQ. MT.

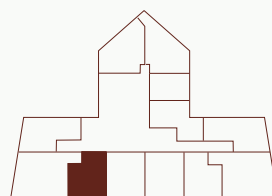
BALCONY 1: 347 SQ. FT. / 32.24 SQ. MT.

BALCONY 2: 100 SQ. FT. / 9.29 SQ. MT.

TOTAL: 1,794 SQ. FT. / 166.67 SQ. MT.



The drawings, specifications, dimensions and any other information in these floor plans are conceptual and for illustration purposes only and should not be relied upon. References should be made to accurate detailed information of the floor plans including calculation of square footage, dimensions, and other information.





ALHAMBRA PARC
CORAL GABLES



RESIDENCE 03

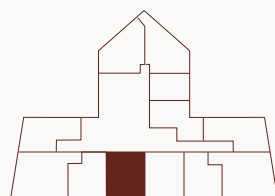
LEVEL 4

- ◆
- 2 BED + 2.5 BATH
- STUDIO/DEN
- 2 BALCONIES

INTERIOR: 1,629 SQ. FT. / 151.34 SQ. MT.
BALCONY 1: 204 SQ. FT. / 18.95 SQ. MT.
BALCONY 2: 225 SQ. FT. / 20.90 SQ. MT.
TOTAL: 2,058 SQ. FT. / 191,19 SQ. MT.

◆

The drawings, specifications, dimensions and any other information in these floor plans are conceptual and for illustration purposes only and should not be relied upon. References should be made to accurate detailed information of the floor plans including calculation of square footage, dimensions, and other information.





ALHAMBRA PARC
CORAL GABLES



RESIDENCE 04

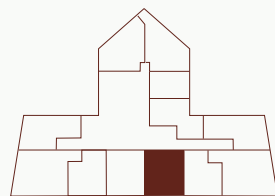
LEVEL 4

- ◆
- 2 BED + 2.5 BATH
- STUDIO/DEN
- 2 BALCONIES

INTERIOR: 1,629 SQ. FT. / 151.34 SQ. MT.
BALCONY 1: 204 SQ. FT. / 18.95 SQ. MT.
BALCONY 2: 225 SQ. FT. / 20.90 SQ. MT.
TOTAL: 2,058 SQ. FT. / 191.19 SQ. MT.

◆

The drawings, specifications, dimensions and any other information in these floor plans are conceptual and for illustration purposes only and should not be relied upon. References should be made to accurate detailed information of the floor plans including calculation of square footage, dimensions, and other information.





ALHAMBRA PARC
CORAL GABLES



RESIDENCE 05

LEVEL 4



2 BED + 2.5 BATH

2 BALCONIES

INTERIOR: 1,347 SQ. FT. / 125.14 SQ. MT.

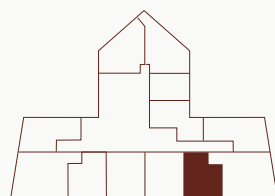
BALCONY 1: 347 SQ. FT. / 32.24 SQ. MT.

BALCONY 2: 100 SQ. FT. / 9.29 SQ. MT.

TOTAL: 1,794 SQ. FT. / 166.67 SQ. MT.



The drawings, specifications, dimensions and any other information in these floor plans are conceptual and for illustration purposes only and should not be relied upon. References should be made to accurate detailed information of the floor plans including calculation of square footage, dimensions, and other information.





ALHAMBRA PARC
CORAL GABLES

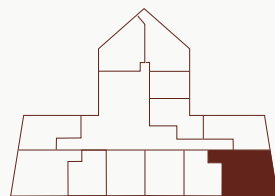


RESIDENCE 06
LEVEL 4

3 BED + 3.5 BATH
STUDIO/DEN
2 BALCONIES

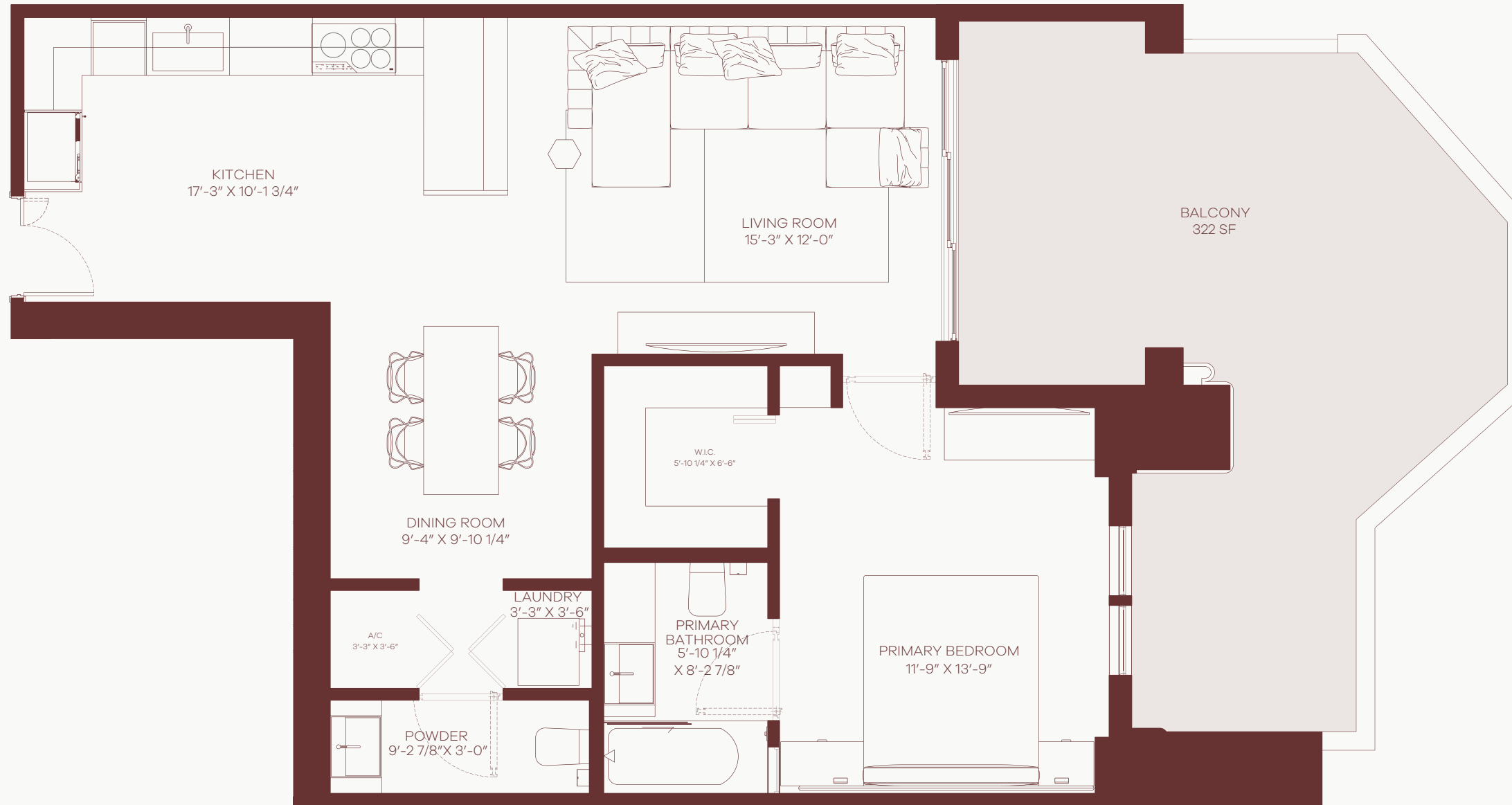
INTERIOR: 1,980 SQ. FT. / 184 SQ. MT.
BALCONY 1: 496 SQ. FT. / 46 SQ. MT.
BALCONY 2: 369 SQ. FT. / 34 SQ. MT.
TOTAL: 2,845 SQ. FT. / 264 SQ. MT.

The drawings, specifications, dimensions and any other information in these floor plans are conceptual and for illustration purposes only and should not be relied upon. References should be made to accurate detailed information of the floor plans including calculation of square footage, dimensions, and other information.





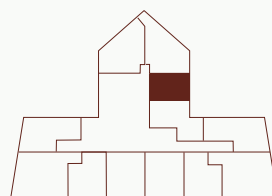
ALHAMBRA PARC
CORAL GABLES



RESIDENCE 09
LEVEL 4

1 BED + 1.5 BATH
1 BALCONY

INTERIOR: 863 SQ. FT. / 80.17 SQ. MT.
BALCONY 1: 322 SQ. FT. / 29.91 SQ. MT.
TOTAL: 1,185 SQ. FT. / 110.08 SQ.MT.



The drawings, specifications, dimensions and any other information in these floor plans are conceptual and for illustration purposes only and should not be relied upon. References should be made to accurate detailed information of the floor plans including calculation of square footage, dimensions, and other information.



ALHAMBRA PARC
CORAL GABLES

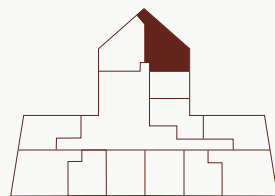


RESIDENCE 10
LEVEL 4

2 BED + 2.5 BATH
STUDIO/DEN
3 BALCONIES

INTERIOR: 1,925 SQ. FT. / 178.83 SQ. MT.
BALCONY 1: 849 SQ. FT. / 78.88 SQ. MT.
BALCONY 2: 118 SQ. FT. / 10.96 SQ. MT.
BALCONY 3: 137 SQ. FT. / XX SQ. MT.
TOTAL: 3,029 SQ. FT. / 243.68 SQ. MT.

The drawings, specifications, dimensions and any other information in these floor plans are conceptual and for illustration purposes only and should not be relied upon. References should be made to accurate detailed information of the floor plans including calculation of square footage, dimensions, and other information.





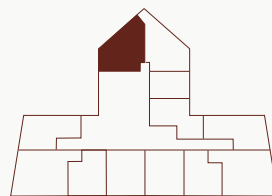
ALHAMBRA PARC
CORAL GABLES



RESIDENCE 11 LEVEL 4

2 BED + 2.5 BATH
STUDIO/DEN
1 BALCONY

INTERIOR: 1,671 SQ. FT. / 155.24 SQ. MT.
BALCONY 1: 941 SQ. FT. / 87.43 SQ. MT.
TOTAL: 2,612 SQ. FT. / 242.67 SQ. MT.



The drawings, specifications, dimensions and any other information in these floor plans are conceptual and for illustration purposes only and should not be relied upon. References should be made to accurate detailed information of the floor plans including calculation of square footage, dimensions, and other information.



ALHAMBRA PARC
CORAL GABLES

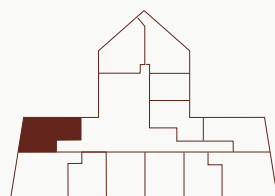


RESIDENCE 12
LEVEL 4

2 BED + 2.5 BATH
FAMILY ROOM
2 BALCONIES

INTERIOR: 1,859 SQ. FT. / 172.71 SQ. MT.
BALCONY 1: 898 SQ. FT. / 83.43 SQ. MT.
BALCONY 2: 369 SQ. FT. / 34.28 SQ. MT.
TOTAL: 3,126 SQ. FT. / 290,42 SQ. MT.

The drawings, specifications, dimensions and any other information in these floor plans are conceptual and for illustration purposes only and should not be relied upon. References should be made to accurate detailed information of the floor plans including calculation of square footage, dimensions, and other information.





ALHAMBRA PARC
CORAL GABLES



RESIDENCE 01

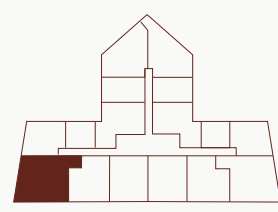
LEVELS 5-8

- +
- 3 BED + 3.5 BATH
- STUDIO/DEN
- 2 BALCONIES

INTERIOR: 1,969 SQ. FT. / 182.93 SQ. MT.
BALCONY 1: 220 SQ. FT. / 20.44 SQ. MT.
BALCONY 2: 71 SQ. FT. / 6.60 SQ. MT.
TOTAL: 2,260 SQ. FT. / 209.97 SQ. MT.

+

The drawings, specifications, dimensions and any other information in these floor plans are conceptual and for illustration purposes only and should not be relied upon. References should be made to accurate detailed information of the floor plans including calculation of square footage, dimensions, and other information.





ALHAMBRA PARC
CORAL GABLES



RESIDENCE 02

LEVELS 5-8



2 BED + 2.5 BATH

1 BALCONIES

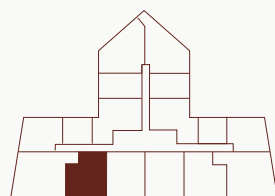
INTERIOR: 1,343 SQ. FT. / 124.78 SQ. MT.

BALCONY 1: 287 SQ. FT. / 26.66 SQ. MT.

TOTAL: 1,853 SQ. FT. / 151.44 SQ. MT.



The drawings, specifications, dimensions and any other information in these floor plans are conceptual and for illustration purposes only and should not be relied upon. References should be made to accurate detailed information of the floor plans including calculation of square footage, dimensions, and other information.





ALHAMBRA PARC
CORAL GABLES



RESIDENCE 03

LEVELS 5-8

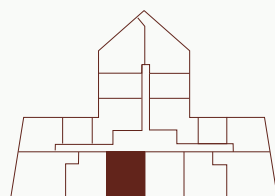


2 BED + 2.5 BATH
STUDIO/DEN
1 BALCONY

INTERIOR: 1,621 SQ. FT. / 150.58 SQ. MT.
BALCONY 1: 142 SQ. FT. / 13.19 SQ. MT.
TOTAL: 1,763 SQ. FT. / 163.77 SQ.MT.

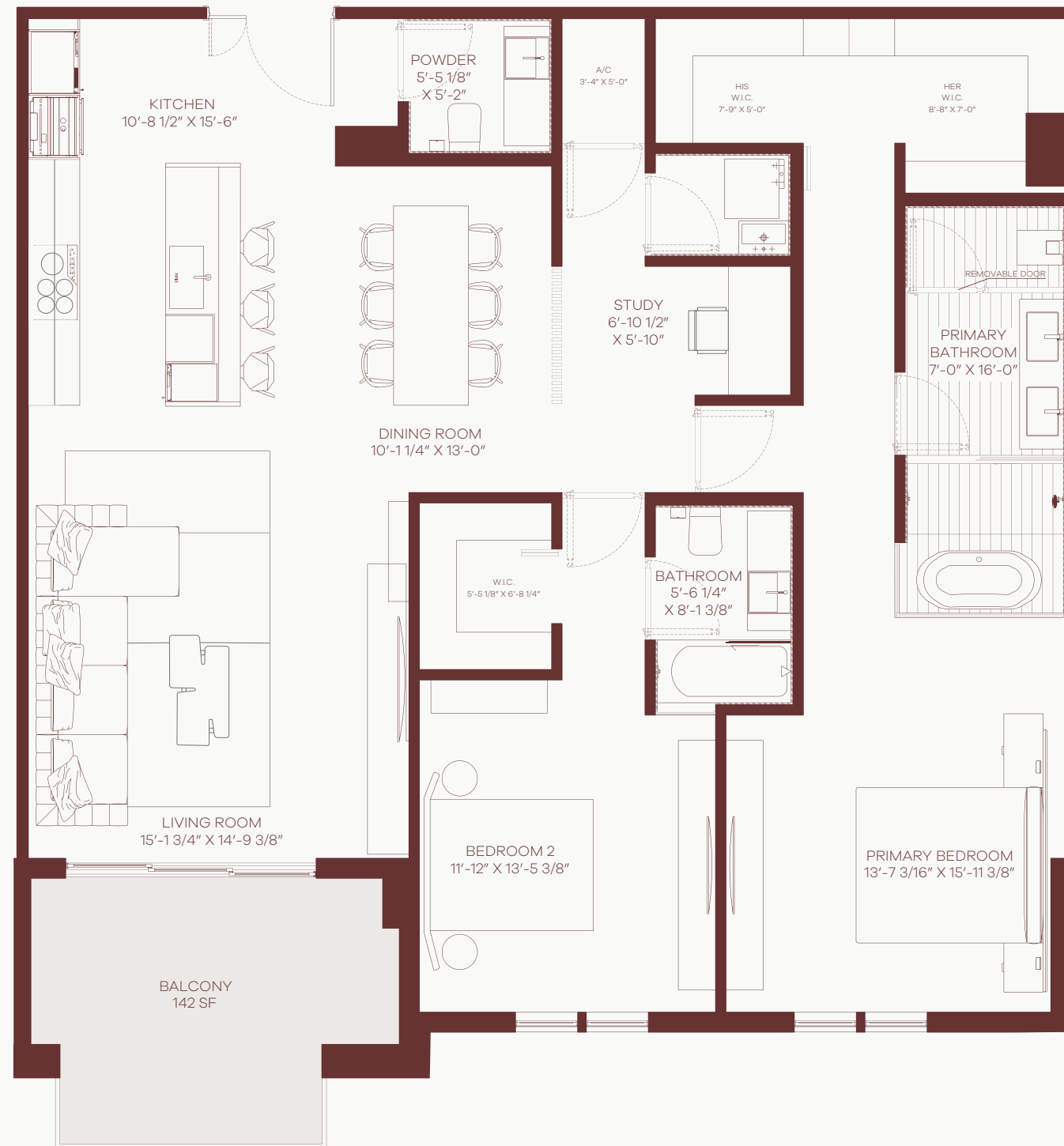


The drawings, specifications, dimensions and any other information in these floor plans are conceptual and for illustration purposes only and should not be relied upon. References should be made to accurate detailed information of the floor plans including calculation of square footage, dimensions, and other information.





ALHAMBRA PARC
CORAL GABLES



RESIDENCE 04

LEVELS 5-8



2 BED + 2.5 BATH
STUDIO/DEN
1 BALCONY

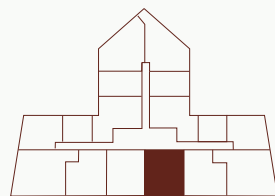
INTERIOR: 1,621 SQ. FT. / 150.58 SQ. MT.

BALCONY 1: 142 SQ. FT. / 13.19 SQ. MT.

TOTAL: 1,763 SQ. FT. / 163.77 SQ.MT.

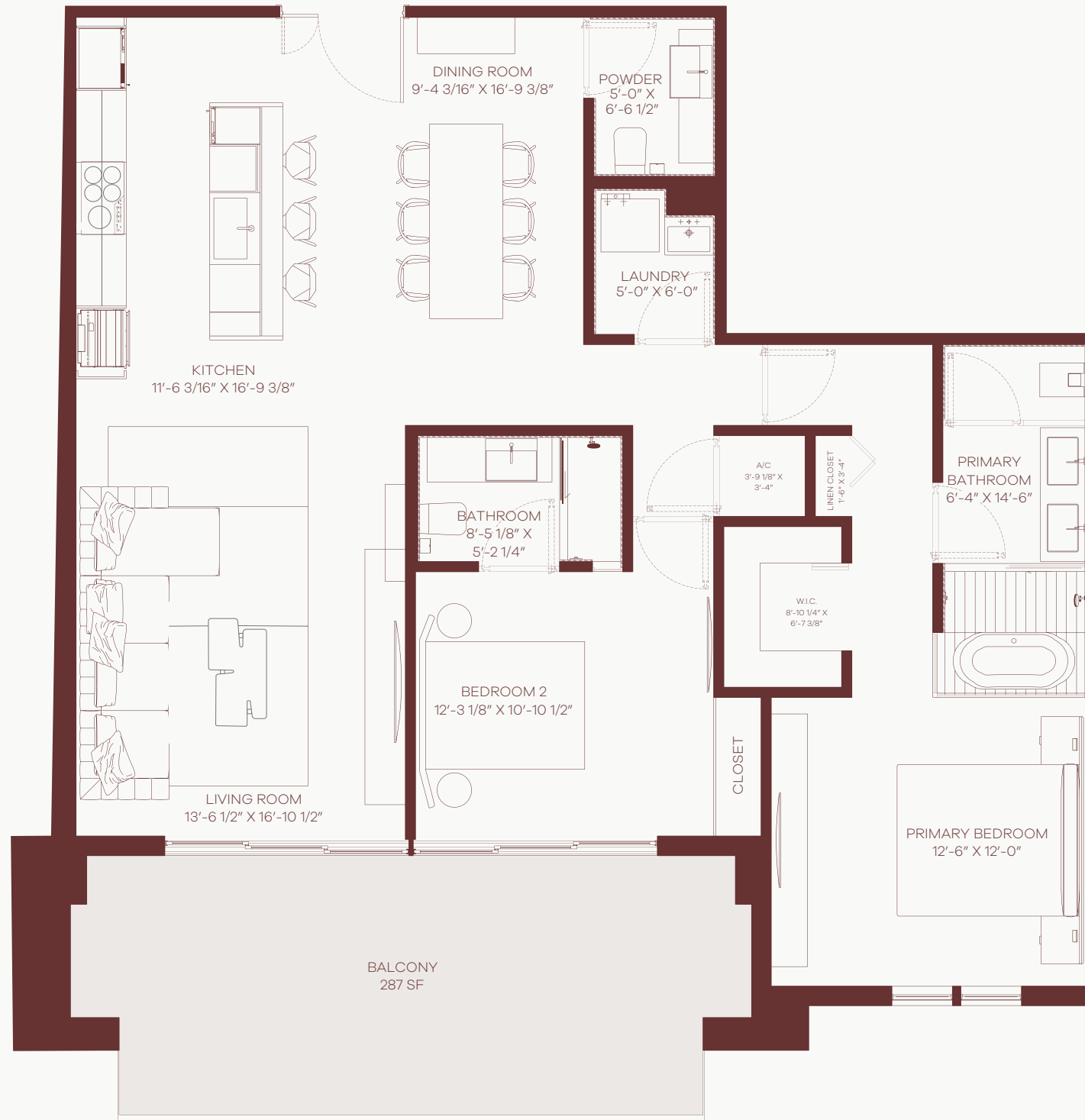


The drawings, specifications, dimensions and any other information in these floor plans are conceptual and for illustration purposes only and should not be relied upon. References should be made to accurate detailed information of the floor plans including calculation of square footage, dimensions, and other information.





ALHAMBRA PARC
CORAL GABLES



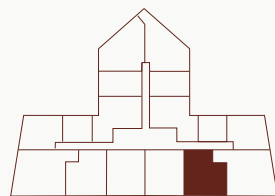
RESIDENCE 05

LEVELS 5-8

◆
2 BED + 2.5 BATH
1 BALCONY

INTERIOR: 1,343 SQ. FT. / 124.78 SQ. MT.
BALCONY 1: 287 SQ. FT. / 26.66 SQ. MT.
TOTAL: 1,630 SQ. FT. / 151.44 SQ.MT.

◆
The drawings, specifications, dimensions and any other information in these floor plans are conceptual and for illustration purposes only and should not be relied upon. References should be made to accurate detailed information of the floor plans including calculation of square footage, dimensions, and other information.





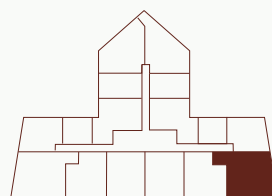
ALHAMBRA PARC
CORAL GABLES



RESIDENCE 06
LEVELS 5-8

3 BED + 3.5 BATH
STUDIO/DEN
2 BALCONIES

INTERIOR: 1,969 SQ. FT. / 182.93 SQ. MT.
BALCONY 1: 220 SQ. FT. / 20.44 SQ. MT.
BALCONY 2: 71 SQ. FT. / 6.60 SQ. MT.
TOTAL: 2,260 SQ. FT. / 209.97 SQ. MT.



The drawings, specifications, dimensions and any other information in these floor plans are conceptual and for illustration purposes only and should not be relied upon. References should be made to accurate detailed information of the floor plans including calculation of square footage, dimensions, and other information.



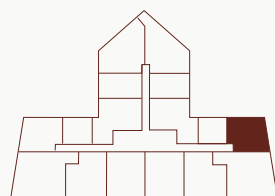
ALHAMBRA PARC
CORAL GABLES



RESIDENCE 07
LEVELS 5-8

2 BED + 2.5 BATH
2 BALCONIES

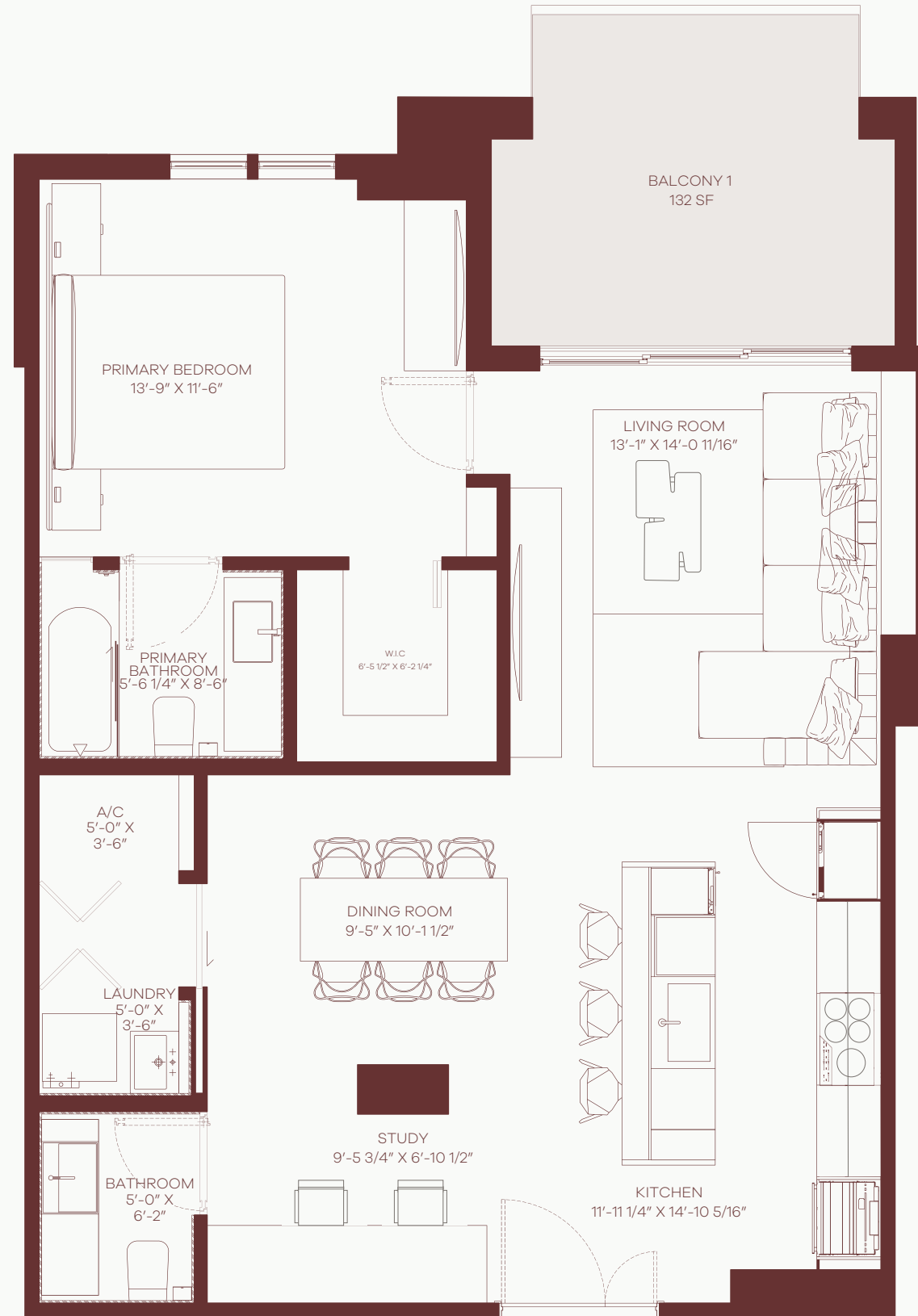
INTERIOR: 1,677 SQ. FT. / 155.79 SQ. MT.
BALCONY 1: 132 SQ. FT. / 12.26 SQ. MT.
BALCONY 2: 71 SQ. FT. / 6.60 SQ. MT.
TOTAL: 1,880 SQ. FT. / 174.65 SQ. MT.



The drawings, specifications, dimensions and any other information in these floor plans are conceptual and for illustration purposes only and should not be relied upon. References should be made to accurate detailed information of the floor plans including calculation of square footage, dimensions, and other information.



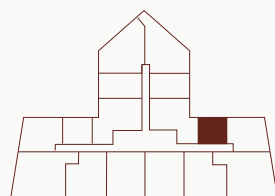
ALHAMBRA PARC
CORAL GABLES



RESIDENCE 08
LEVELS 5-8

1 BED + 2 BATH
STUDIO/DEN
1 BALCONY

INTERIOR: 965 SQ. FT. / 89.65 SQ. MT.
BALCONY 1: 132 SQ. FT. / 12.26 SQ. MT.
TOTAL: 1,097 SQ. FT. / 101.91 SQ.MT.



The drawings, specifications, dimensions and any other information in these floor plans are conceptual and for illustration purposes only and should not be relied upon. References should be made to accurate detailed information of the floor plans including calculation of square footage, dimensions, and other information.



ALHAMBRA PARC
CORAL GABLES



RESIDENCE 09

LEVELS 5-8

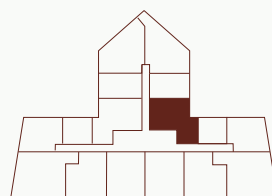
2 BED + 2.5 BATH

1 BALCONY

INTERIOR: 1,615 SQ. FT. / 150.03 SQ. MT.

BALCONY 1: 233 SQ. FT. / 21.65 SQ. MT.

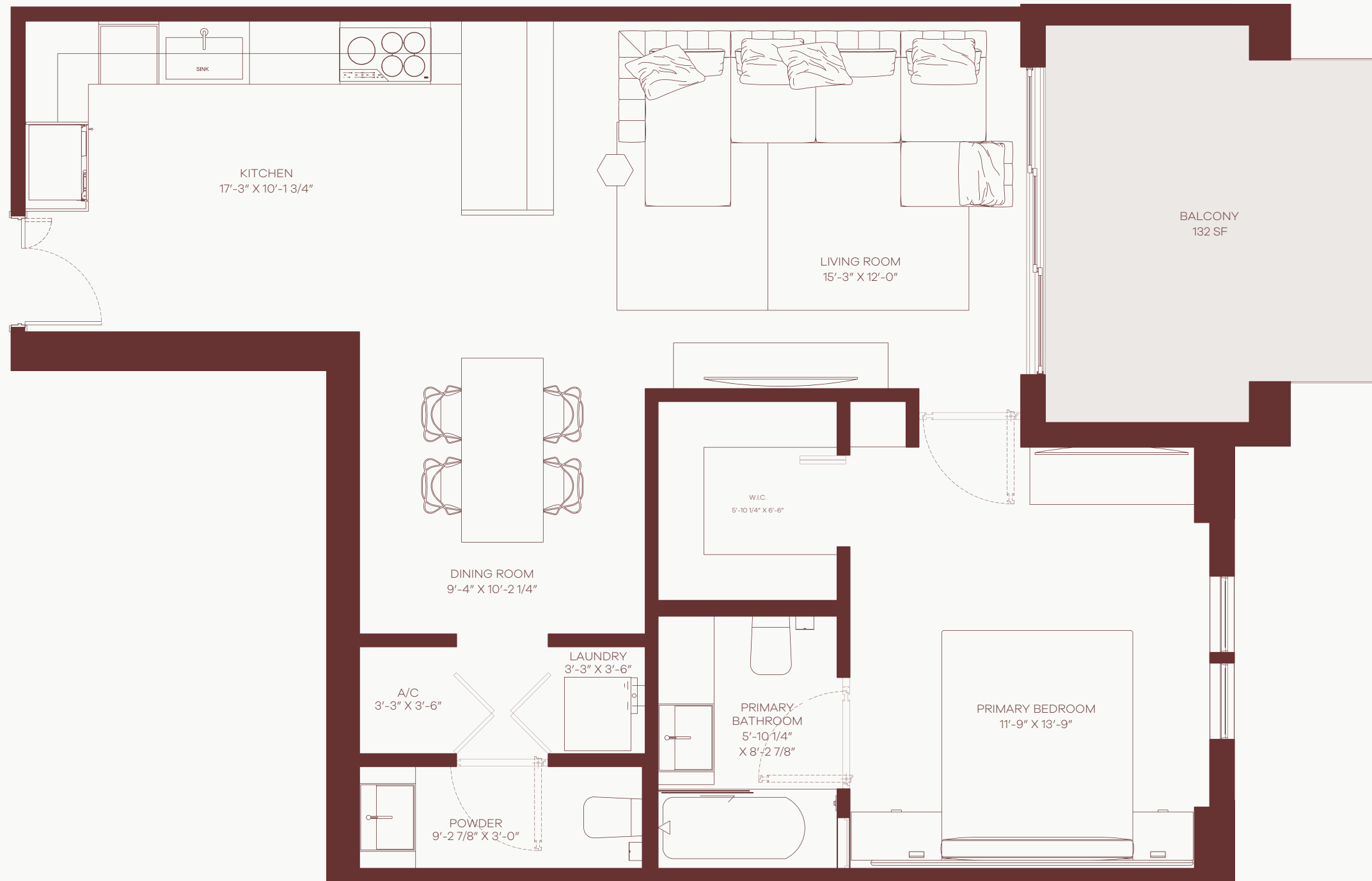
TOTAL: 1,848 SQ. FT. / 171.68 SQ.MT.



The drawings, specifications, dimensions and any other information in these floor plans are conceptual and for illustration purposes only and should not be relied upon. References should be made to accurate detailed information of the floor plans including calculation of square footage, dimensions, and other information.



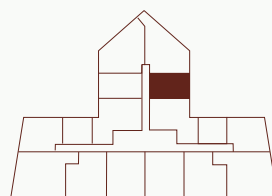
ALHAMBRA PARC
CORAL GABLES



RESIDENCE 10
LEVELS 5-8

1 BED + 1.5 BATH
1 BALCONY

INTERIOR: 858 SQ. FT. / 79.69 SQ. MT.
BALCONY 1: 132 SQ. FT. / 12.26 SQ. MT.
TOTAL: 990 SQ. FT. / 91.95 SQ.MT.



The drawings, specifications, dimensions and any other information in these floor plans are conceptual and for illustration purposes only and should not be relied upon. References should be made to accurate detailed information of the floor plans including calculation of square footage, dimensions, and other information.



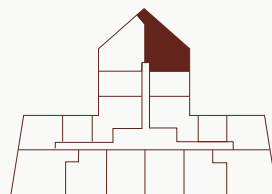
ALHAMBRA PARC
CORAL GABLES



RESIDENCE 11 LEVELS 5-8

2 BED + 2.5 BATH
STUDIO/DEN
2 BALCONIES

INTERIOR: 1,905 SQ. FT. / 176.98 SQ. MT.
BALCONY 1: 148 SQ. FT. / 13.75 SQ. MT.
BALCONY 2: 132 SQ. FT. / 12.26 SQ. MT.
TOTAL: 2,185 SQ. FT. / 202.99 SQ. MT.



The drawings, specifications, dimensions and any other information in these floor plans are conceptual and for illustration purposes only and should not be relied upon. References should be made to accurate detailed information of the floor plans including calculation of square footage, dimensions, and other information.



ALHAMBRA PARC
CORAL GABLES



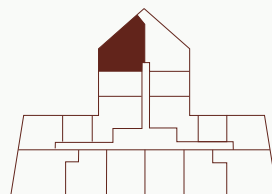
RESIDENCE 12

LEVELS 5-8

2 BED + 2.5 BATH
STUDIO/DEN
2 BALCONIES

INTERIOR: 1,665 SQ. FT. / 154.68 SQ. MT.
BALCONY 1: 147 SQ. FT. / 13.66 SQ. MT.
BALCONY 2: 132 SQ. FT. / 12.26 SQ. MT.
TOTAL: 1,944 SQ. FT. / 180.60 SQ. MT.

The drawings, specifications, dimensions and any other information in these floor plans are conceptual and for illustration purposes only and should not be relied upon. References should be made to accurate detailed information of the floor plans including calculation of square footage, dimensions, and other information.





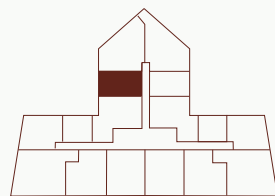
ALHAMBRA PARC
CORAL GABLES



RESIDENCE 13
LEVELS 5-8

1 BED + 2 BATH
STUDIO/DEN
1 BALCONY

INTERIOR: 1,036 SQ. FT. / 96.24 SQ. MT.
BALCONY 1: 132 SQ. FT. / 12.26 SQ. MT.
TOTAL: 1,168 SQ. FT. / 108.50 SQ. MT.



The drawings, specifications, dimensions and any other information in these floor plans are conceptual and for illustration purposes only and should not be relied upon. References should be made to accurate detailed information of the floor plans including calculation of square footage, dimensions, and other information.



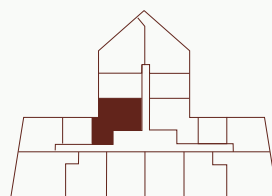
ALHAMBRA PARC
CORAL GABLES



RESIDENCE 14
LEVELS 5-8

2 BED + 2.5 BATH
1 BALCONY

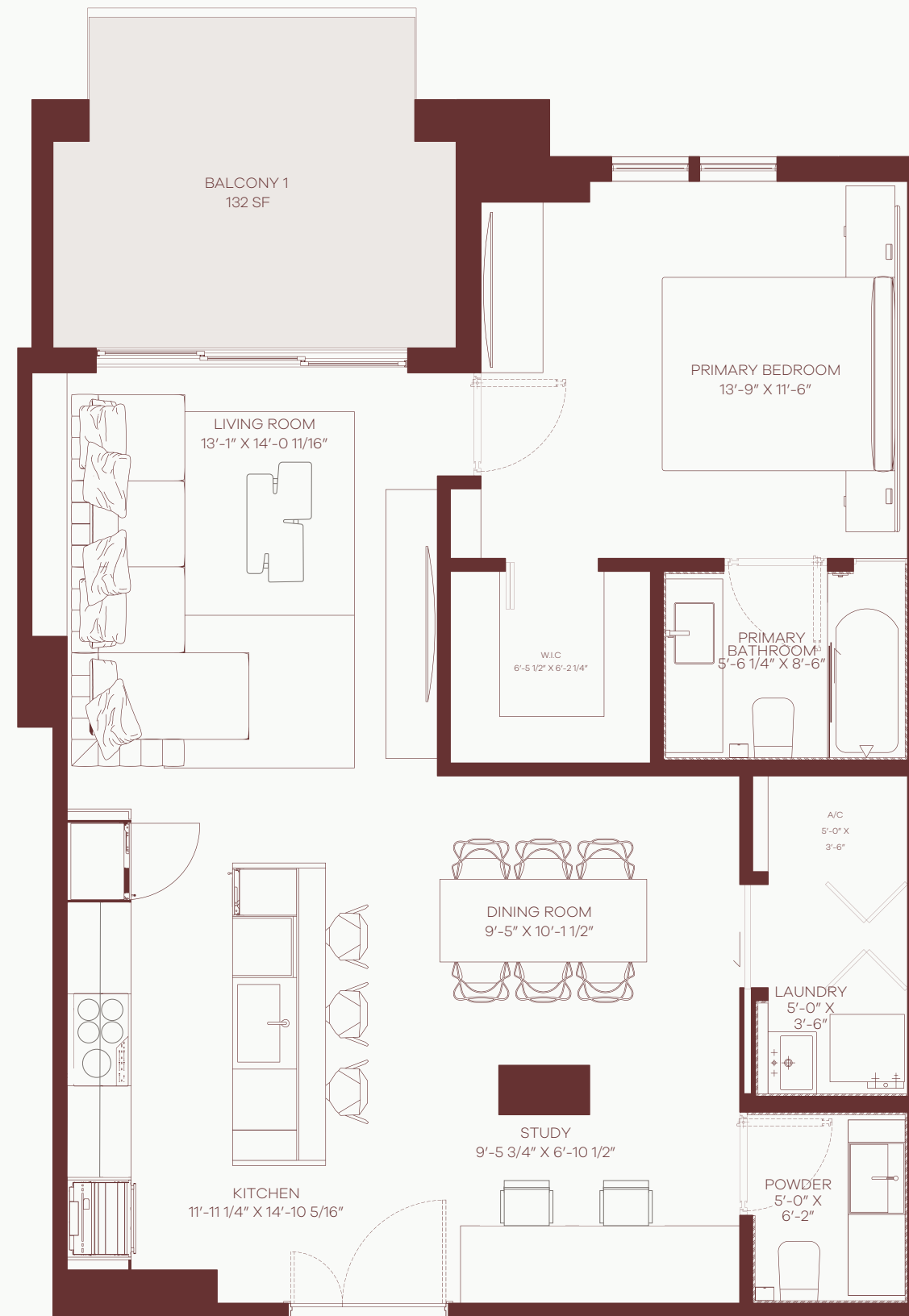
INTERIOR: 1,625 SQ. FT. / 150.96 SQ. MT.
BALCONY 1: 233 SQ. FT. / 21.65 SQ. MT.
TOTAL: 1,853 SQ. FT. / 172.61 SQ. MT.



The drawings, specifications, dimensions and any other information in these floor plans are conceptual and for illustration purposes only and should not be relied upon. References should be made to accurate detailed information of the floor plans including calculation of square footage, dimensions, and other information.



ALHAMBRA PARC
CORAL GABLES

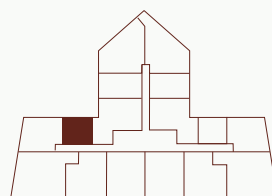


RESIDENCE 15

LEVELS 5-8

1 BED + 1.5 BATH
STUDIO/DEN
1 BALCONY

INTERIOR: 965 SQ. FT. / 89.65 SQ. MT.
BALCONY 1: 132 SQ. FT. / 12.26 SQ. MT.
TOTAL: 1,097 SQ. FT. / 101.91 SQ. MT.



The drawings, specifications, dimensions and any other information in these floor plans are conceptual and for illustration purposes only and should not be relied upon. References should be made to accurate detailed information of the floor plans including calculation of square footage, dimensions, and other information.



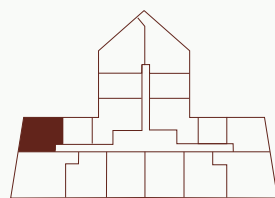
ALHAMBRA PARC
CORAL GABLES



RESIDENCE 16
LEVELS 5-8

2 BED + 2.5 BATH
2 BALCONIES

INTERIOR: 1,677 SQ. FT. / 155.79 SQ. MT.
BALCONY 1: 132 SQ. FT. / 12.26 SQ. MT.
BALCONY 2: 71 SQ. FT. / 6.60 SQ. MT.
TOTAL: 1,880 SQ. FT. / 174.65 SQ. MT.



The drawings, specifications, dimensions and any other information in these floor plans are conceptual and for illustration purposes only and should not be relied upon. References should be made to accurate detailed information of the floor plans including calculation of square footage, dimensions, and other information.



ALHAMBRA PARC
CORAL GABLES

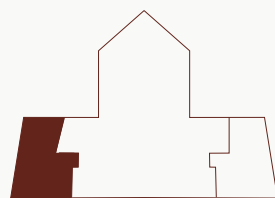


RESIDENCE 01
PENTHOUSES

3 BED + 3.5 BATH
STUDIO/DEN
3 TERRACES

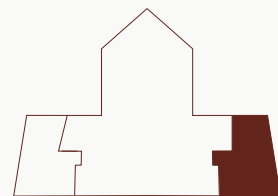
INTERIOR: 2,801 SQ. FT. / 260.22 SQ. MT.
TERRACE 1: 2,127 SQ. FT. / 197.58 SQ. MT.
TERRACE 2: 308 SQ. FT. / 28.61 SQ. MT.
TERRACE 3: 300 SQ. FT. / **XX SQ.MT.**
TOTAL: 5,536 SQ. FT. / **XXX SQ.MT.**

The drawings, specifications, dimensions and any other information in these floor plans are conceptual and for illustration purposes only and should not be relied upon. References should be made to accurate detailed information of the floor plans including calculation of square footage, dimensions, and other information.





ALHAMBRA PARC
CORAL GABLES



RESIDENCE 02
PENTHOUSES

3 BED + 3.5 BATH
STUDIO/DEN
3 TERRACES

INTERIOR: 2,801 SQ. FT. / 260.22 SQ. MT.
TERRACE 1: 2,127 SQ. FT. / 197.58 SQ. MT.
TERRACE 2: 308 SQ. FT. / 28.61 SQ. MT.
TERRACE 3: 300 SQ. FT. / **XX SQ.MT.**
TOTAL: 5,536 SQ. FT. / **XXX SQ.MT.**

The drawings, specifications, dimensions and any other information in these floor plans are conceptual and for illustration purposes only and should not be relied upon. References should be made to accurate detailed information of the floor plans including calculation of square footage, dimensions, and other information.