

RESIDENCE 01

LEVEL 62-78 TRADIZIONALE

- 4 Bedrooms
- 4 Bathrooms
- 1 Powder Room
- Service Quarters

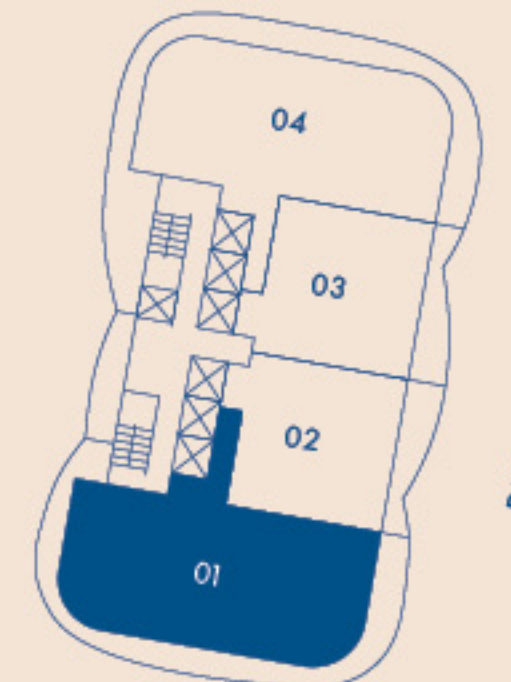
INTERIOR AREA

3,464 sq. ft. / 322 sq. m.

TERRACE AREA

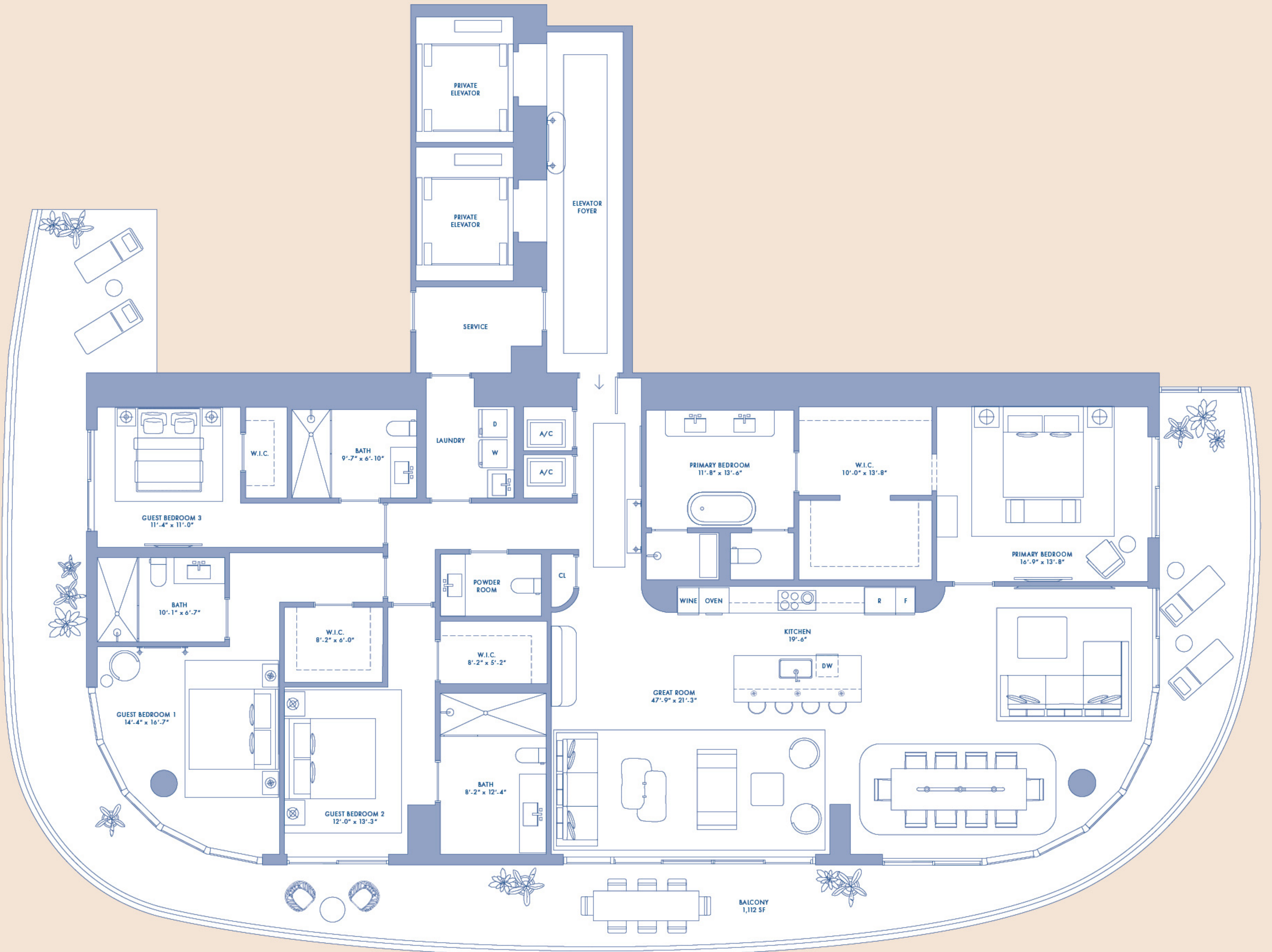
1,112 SQ. FT. / 103 SQ. M.

BRICKELL SKYLINE



NOT TO SCALE

Stated square footages and dimensions are measured to the exterior boundaries of the exterior walls and the centerline of interior demising walls and in fact vary from the square footage and dimensions that would be determined by using the description and definition of the "Unit" set forth in the Declaration (which generally only includes the interior airspace between the perimeter walls and excludes all interior structural components and other common elements). This method is generally used in sales materials and is provided to allow a prospective buyer to compare the Units with units in other condominium projects that utilize the same method. For your reference, the area of the Unit, determined in accordance with these defined unit boundaries, is set forth on Exhibit "3" to the Declaration. Measurements of rooms set forth on this floor plan are generally taken at the farthest points of each given room (as if the room were a perfect rectangle), without regard for any cutouts or variations. Accordingly, the area of the actual room will typically be smaller than the product obtained by multiplying the stated length and width. All dimensions are estimates which will vary with actual construction, and all floor plans, specifications and other development plans are subject to change and will not necessarily accurately reflect the final plans and specifications for the development. All depictions of appliances, counters, soffits, floor coverings and other matters of detail, including, without limitation, items of finish and decoration, are conceptual only and are not necessarily included in each Unit. EQUAL HOUSING OPPORTUNITY. The complete offering terms are in a CPS-12 application available from the offeror. File NO. CP23-0069. Warning: the California department of real estate has not inspected, examined, or qualified this offering. Registration certificate file NO. 179439RC-OOSRO. This advertisement is a solicitation for the sale of units in 1420 S. Miami Avenue Condominium & N.J. Registration NO. 24-04-0005. Carmel & Reyes PLLC shall not be held liable or responsible for the failure by client and/or its agents to provide complete and accurate information in the disclosure documents and/or representations. Under no circumstances shall Carmel & Reyes PLLC be liable for any claims, direct, indirect, incidental, special, or consequential damages arising out of your failure to provide complete and accurate information and/or to adequately review a document for accuracy prior to its dissemination or use.



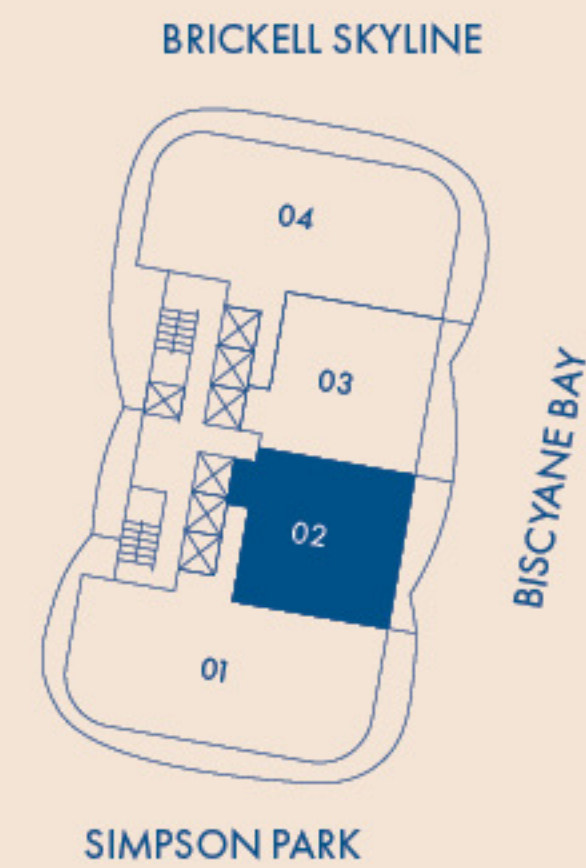
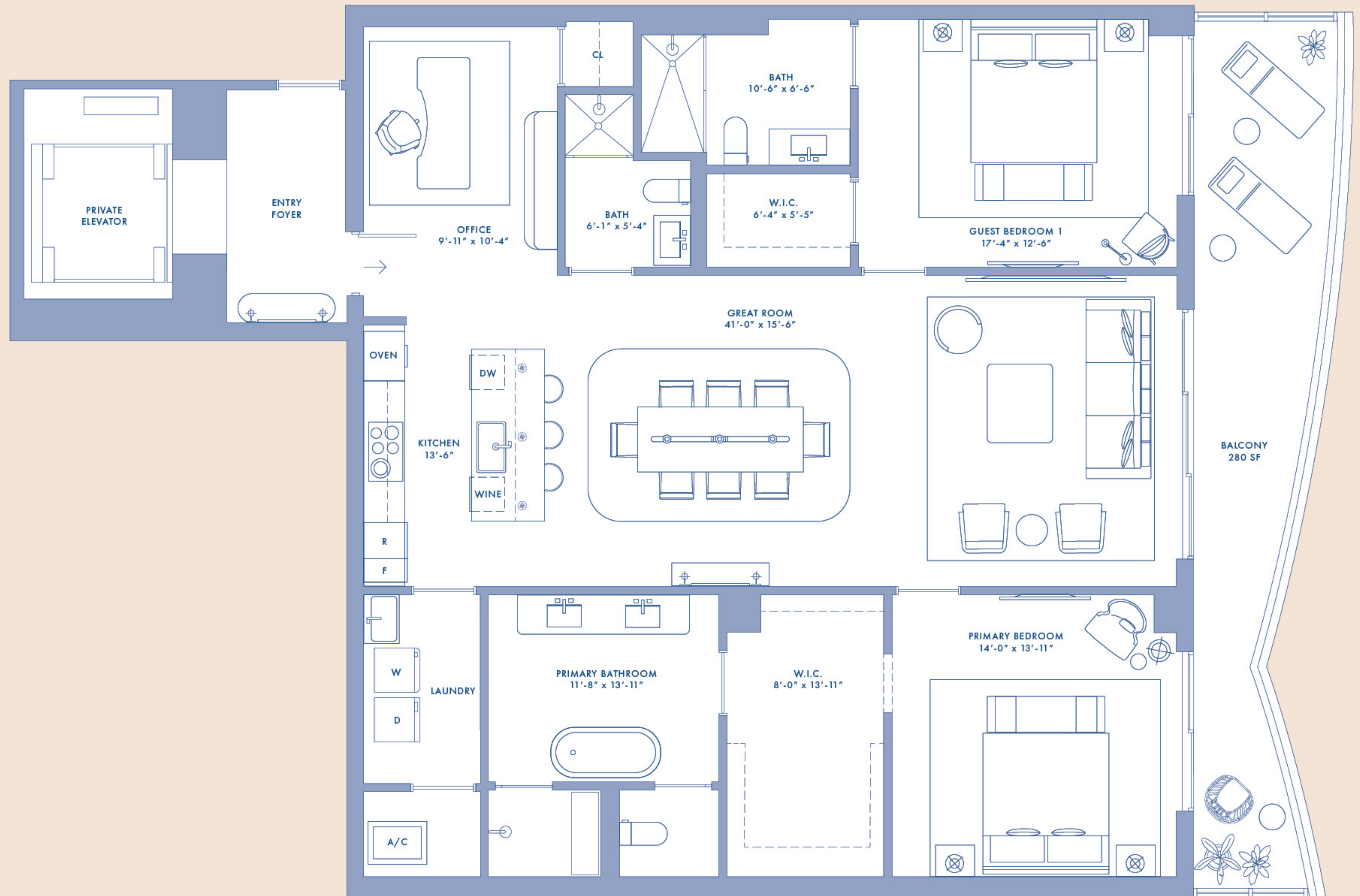
RESIDENCE 02

LEVEL 62-78 TRADIZIONALE

2 Bedrooms
Den
3 Bathrooms

INTERIOR AREA
2,018 SQ. FT. / 187 SQ. M.

TERRACE AREA
280 SQ. FT. / 26 SQ. M.



NOT TO SCALE

Stated square footages and dimensions are measured to the exterior boundaries of the exterior walls and the centerline of interior demising walls and in fact vary from the square footages and dimensions that would be determined by using the description and definition of the "Unit" set forth in the Declaration (which generally only includes the interior airspace between the perimeter walls and excludes all interior structural components and other common elements). This method is generally used in sales materials and is provided to allow a prospective buyer to compare the Units with units in other condominium projects that utilize the same method. For your reference, the area of the Unit, determined in accordance with these defined unit boundaries, is set forth on Exhibit "3" to the Declaration. Measurements of rooms set forth on this floor plan are generally taken at the farthest points of each given room (as if the room were a perfect rectangle), without regard for any cutouts or variations. Accordingly, the area of the actual room will typically be smaller than the product obtained by multiplying the stated length and width. All dimensions are estimates which will vary with actual construction, and all floor plans, specifications and other development plans are subject to change and will not necessarily accurately reflect the final plans and specifications for the development. All depictions of appliances, counters, soffits, floor coverings and other matters of detail, including, without limitation, items of finish and decoration, are conceptual only and are not necessarily included in each Unit. EQUAL HOUSING OPPORTUNITY. The complete offering terms are in a CPS-12 application available from the offeror. File NO.CP23-0069. Warning: the California department of real estate has not inspected, examined, or qualified this offering. Registration certificate file NO.179439RC-OOSRO. This advertisement is a solicitation for the sale of units in 1420 S. Miami Avenue Condominium & N.J. Registration NO.24-04-0005. Carmel & Reyes PLLC shall not be held liable or responsible for the failure by client and/or its agents to provide complete and accurate information in the disclosure documents and/or representations. Under no circumstances shall Carmel & Reyes PLLC be liable for any claims, direct, indirect, incidental, special, or consequential damages arising out of your failure to provide complete and accurate information and/or to adequately review a document for accuracy prior to its dissemination or use.

RESIDENCE 03

LEVEL 62-78 TRADIZIONALE

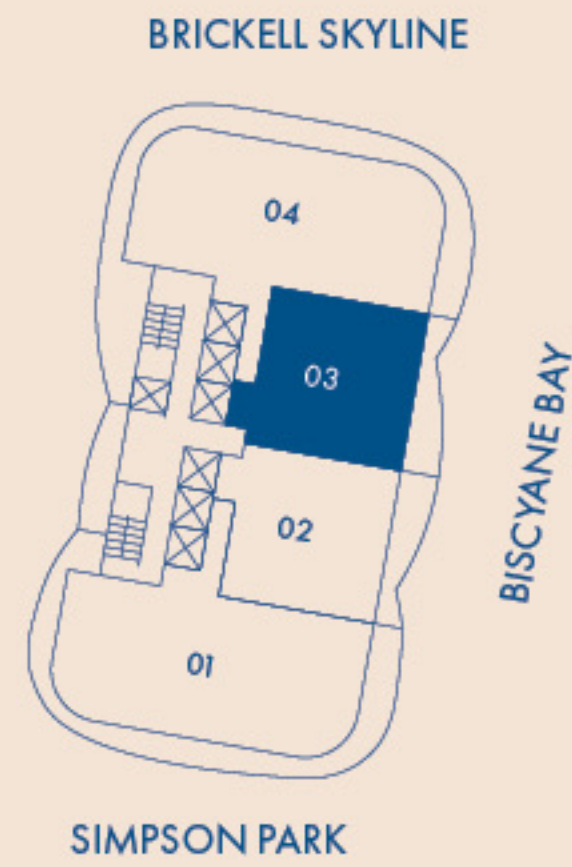
2 Bedrooms
Den
3 Bathrooms

INTERIOR AREA

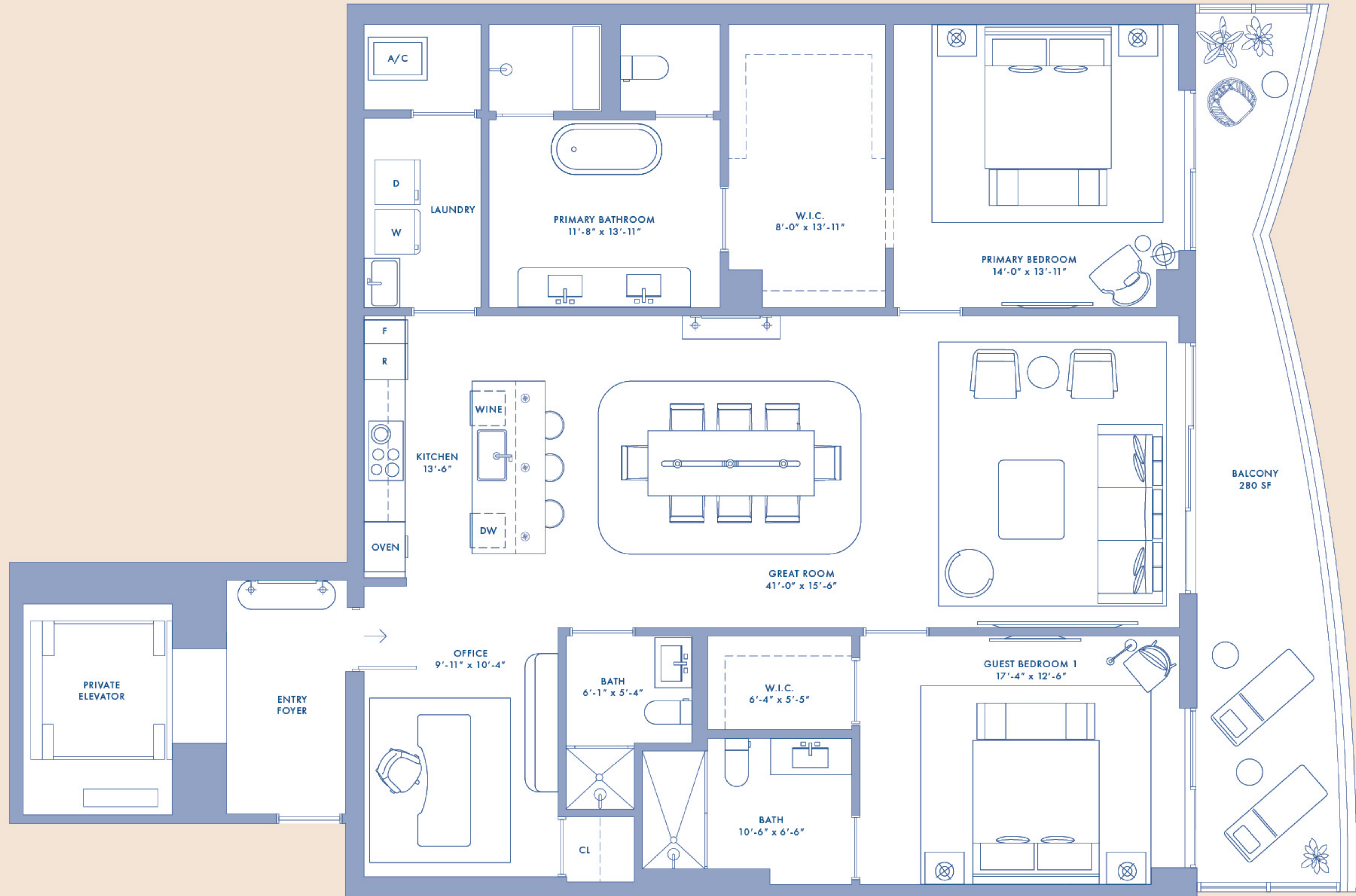
2,018 SQ. FT. / 187 SQ. M.

TERRACE AREA

280 SQ. FT. / 26 SQ. M.



NOT TO SCALE



Stated square footages and dimensions are measured to the exterior boundaries of the exterior walls and the centerline of interior demising walls and in fact vary from the square footage and dimensions that would be determined by using the description and definition of the "Unit" set forth in the Declaration (which generally only includes the interior airspace between the perimeter walls and excludes all interior structural components and other common elements). This method is generally used in sales materials and is provided to allow a prospective buyer to compare the Units with units in other condominium projects that utilize the same method. For your reference, the area of the Unit, determined in accordance with these defined unit boundaries, is set forth on Exhibit "3" to the Declaration. Measurements of rooms set forth on this floor plan are generally taken at the farthest points of each given room (as if the room were a perfect rectangle), without regard for any cutouts or variations. Accordingly, the area of the actual room will typically be smaller than the product obtained by multiplying the stated length and width. All dimensions are estimates which will vary with actual construction, and all floor plans, specifications and other development plans are subject to change and will not necessarily accurately reflect the final plans and specifications for the development. All depictions of appliances, counters, soffits, floor coverings and other matters of detail, including, without limitation, items of finish and decoration, are conceptual only and are not necessarily included in each Unit. EQUAL HOUSING OPPORTUNITY. The complete offering terms are in a CPS-12 application available from the offeror. File NO.CP23-0069. Warning: the California department of real estate has not inspected, examined, or qualified this offering. Registration certificate file NO.179439RC-OOSRO. This advertisement is a solicitation for the sale of units in 1420 S. Miami Avenue Condominium & N.J. Registration NO.24-04-0005. Carmel & Reyes PLLC shall not be held liable or responsible for the failure by client and/or its agents to provide complete and accurate information in the disclosure documents and/or representations. Under no circumstances shall Carmel & Reyes PLLC be liable for any claims, direct, indirect, incidental, special, or consequential damages arising out of your failure to provide complete and accurate information and/or to adequately review a document for accuracy prior to its dissemination or use.

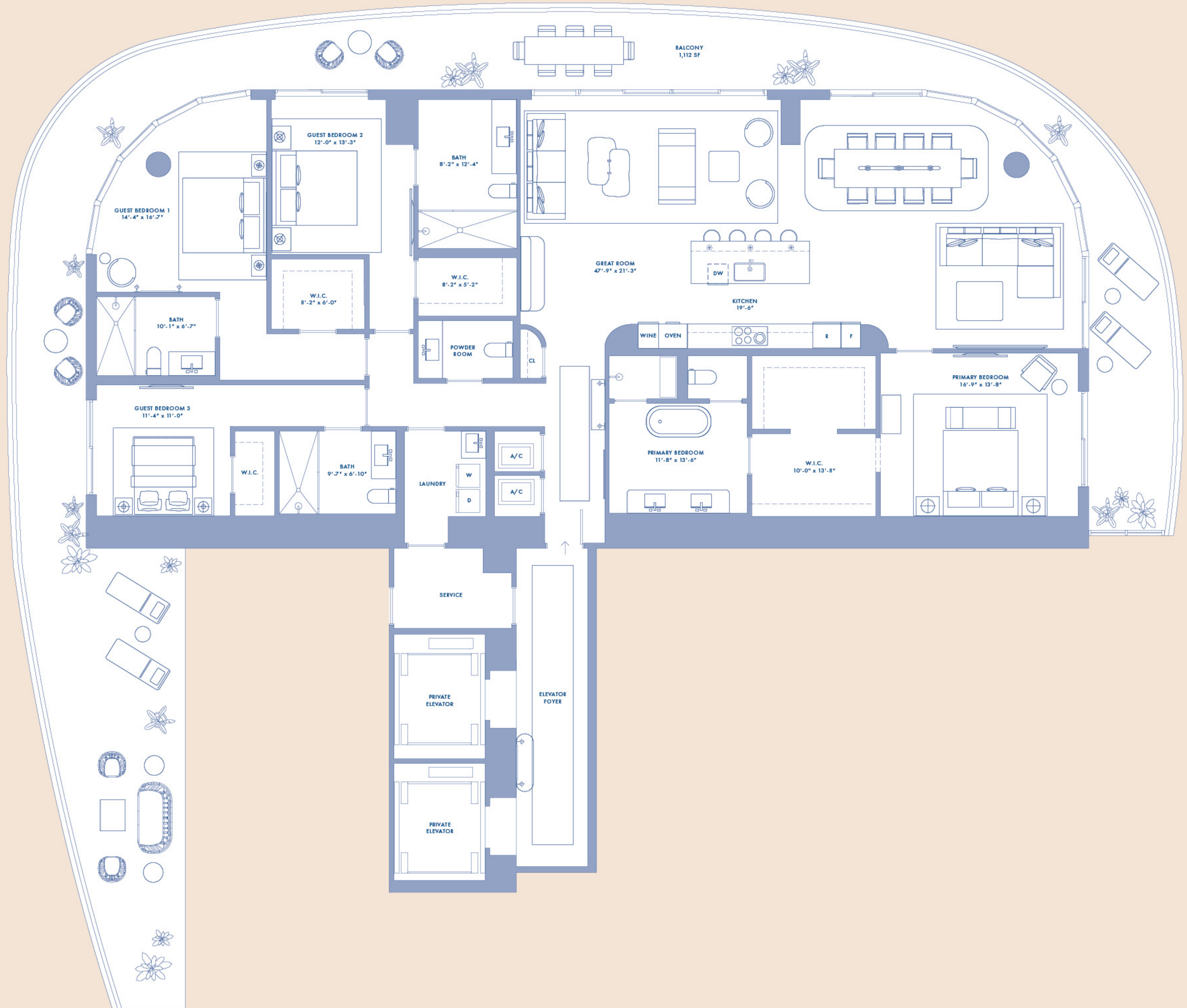
RESIDENCE 04

LEVEL 62-78 TRADIZIONALE

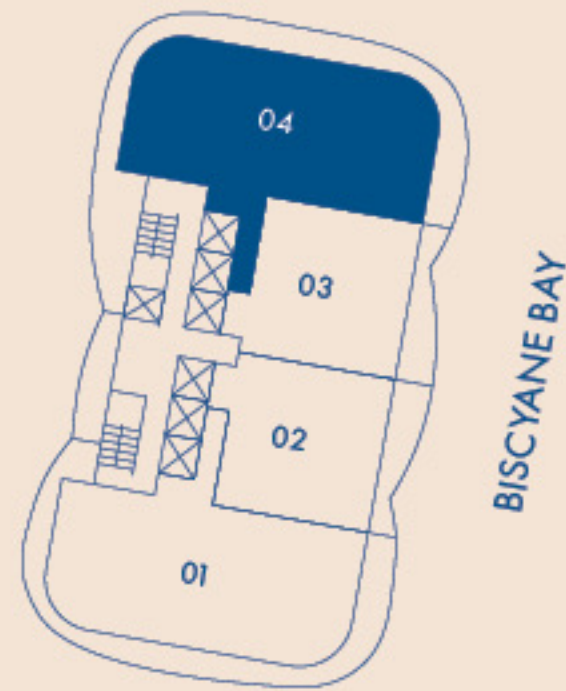
4 Bedrooms
4 Bathrooms
1 Powder Room
Service Quarters

INTERIOR AREA
3,465 SQ. FT. / 322 SQ. M

TERRACE AREA
1,558 SQ. FT. / 145 SQ. M



BRICKELL SKYLINE



NOT TO SCALE

Stated square footages and dimensions are measured to the exterior boundaries of the exterior walls and the centerline of interior demising walls and in fact vary from the square footage and dimensions that would be determined by using the description and definition of the "Unit" set forth in the Declaration (which generally only includes the interior airspace between the perimeter walls and excludes all interior structural components and other common elements). This method is generally used in sales materials and is provided to allow a prospective buyer to compare the Units with units in other condominium projects that utilize the same method. For your reference, the area of the Unit, determined in accordance with these defined unit boundaries, is set forth on Exhibit "3" to the Declaration. Measurements of rooms set forth on this floor plan are generally taken at the farthest points of each given room (as if the room were a perfect rectangle), without regard for any cutouts or variations. Accordingly, the area of the actual room will typically be smaller than the product obtained by multiplying the stated length and width. All dimensions are estimates which will vary with actual construction, and all floor plans, specifications and other development plans are subject to change and will not necessarily accurately reflect the final plans and specifications for the development. All depictions of appliances, counters, soffits, floor coverings and other matters of detail, including, without limitation, items of finish and decoration, are conceptual only and are not necessarily included in each Unit. EQUAL HOUSING OPPORTUNITY. The complete offering terms are in a CPS-12 application available from the offeror. File NO.CP23-0069. Warning: the California department of real estate has not inspected, examined, or qualified this offering. Registration certificate file NO.179439RC-OOSRO. This advertisement is a solicitation for the sale of units in 1420 S. Miami Avenue Condominium & N.J. Registration NO.24-04-0005. Carmel & Reyes PLLC shall not be held liable or responsible for the failure by client and/or its agents to provide complete and accurate information in the disclosure documents and/or representations. Under no circumstances shall Carmel & Reyes PLLC be liable for any claims, direct, indirect, incidental, special, or consequential damages arising out of your failure to provide complete and accurate information and/or to adequately review a document for accuracy prior to its dissemination or use.

RESIDENCE 01

LEVEL 62-78 CONTEMPORANEO

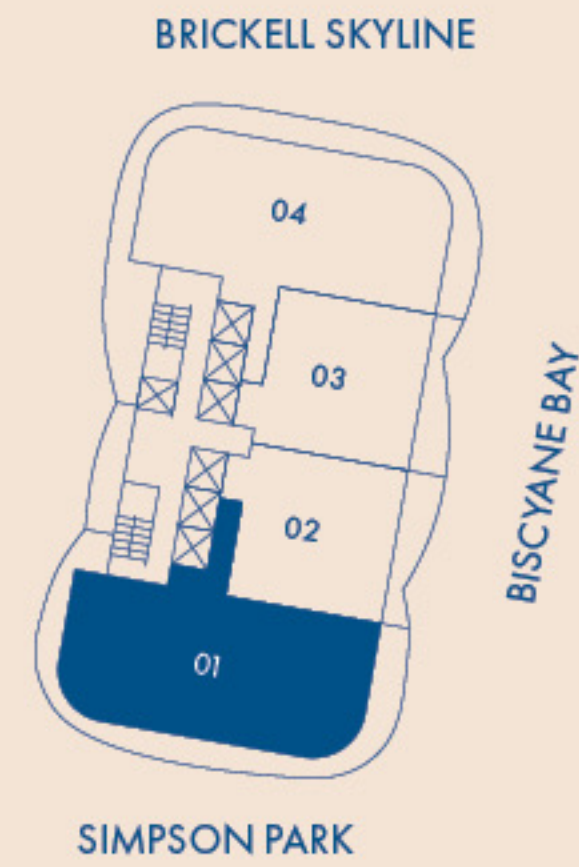
- 4 Bedrooms
- 4 Bathrooms
- 1 Powder Room
- Service Quarters

INTERIOR AREA

3,464 sq. ft. / 322 sq. m.

TERRACE AREA

1,112 SQ. FT. / 103 SQ. M.



NOT TO SCALE

Stated square footages and dimensions are measured to the exterior boundaries of the exterior walls and the centerline of interior demising walls and in fact vary from the square footage and dimensions that would be determined by using the description and definition of the "Unit" set forth in the Declaration (which generally only includes the interior airspace between the perimeter walls and excludes all interior structural components and other common elements). This method is generally used in sales materials and is provided to allow a prospective buyer to compare the Units with units in other condominium projects that utilize the same method. For your reference, the area of the Unit, determined in accordance with these defined unit boundaries, is set forth on Exhibit "3" to the Declaration. Measurements of rooms set forth on this floor plan are generally taken at the farthest points of each given room (as if the room were a perfect rectangle), without regard for any cutouts or variations. Accordingly, the area of the actual room will typically be smaller than the product obtained by multiplying the stated length and width. All dimensions are estimates which will vary with actual construction, and all floor plans, specifications and other development plans are subject to change and will not necessarily accurately reflect the final plans and specifications for the development. All depictions of appliances, counters, soffits, floor coverings and other matters of detail, including, without limitation, items of finish and decoration, are conceptual only and are not necessarily included in each Unit. EQUAL HOUSING OPPORTUNITY. The complete offering terms are in a CPS-12 application available from the offeror. File NO. CP23-0069. Warning: the California department of real estate has not inspected, examined, or qualified this offering. Registration certificate file NO. 179439RC-OOSRO. This advertisement is a solicitation for the sale of units in 1420 S. Miami Avenue Condominium & N.J. Registration NO. 24-04-0005. Carmel & Reyes PLLC shall not be held liable or responsible for the failure by client and/or its agents to provide complete and accurate information in the disclosure documents and/or representations. Under no circumstances shall Carmel & Reyes PLLC be liable for any claims, direct, indirect, incidental, special, or consequential damages arising out of your failure to provide complete and accurate information and/or to adequately review a document for accuracy prior to its dissemination or use.



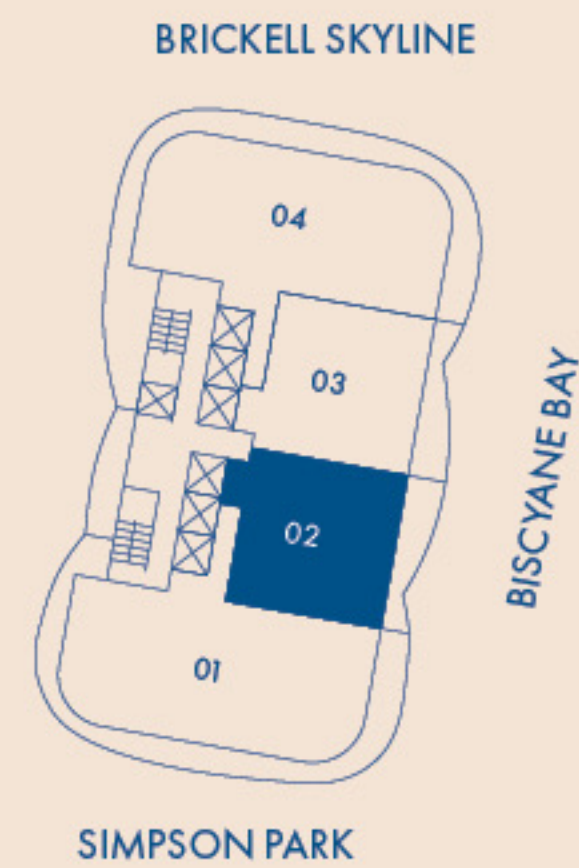
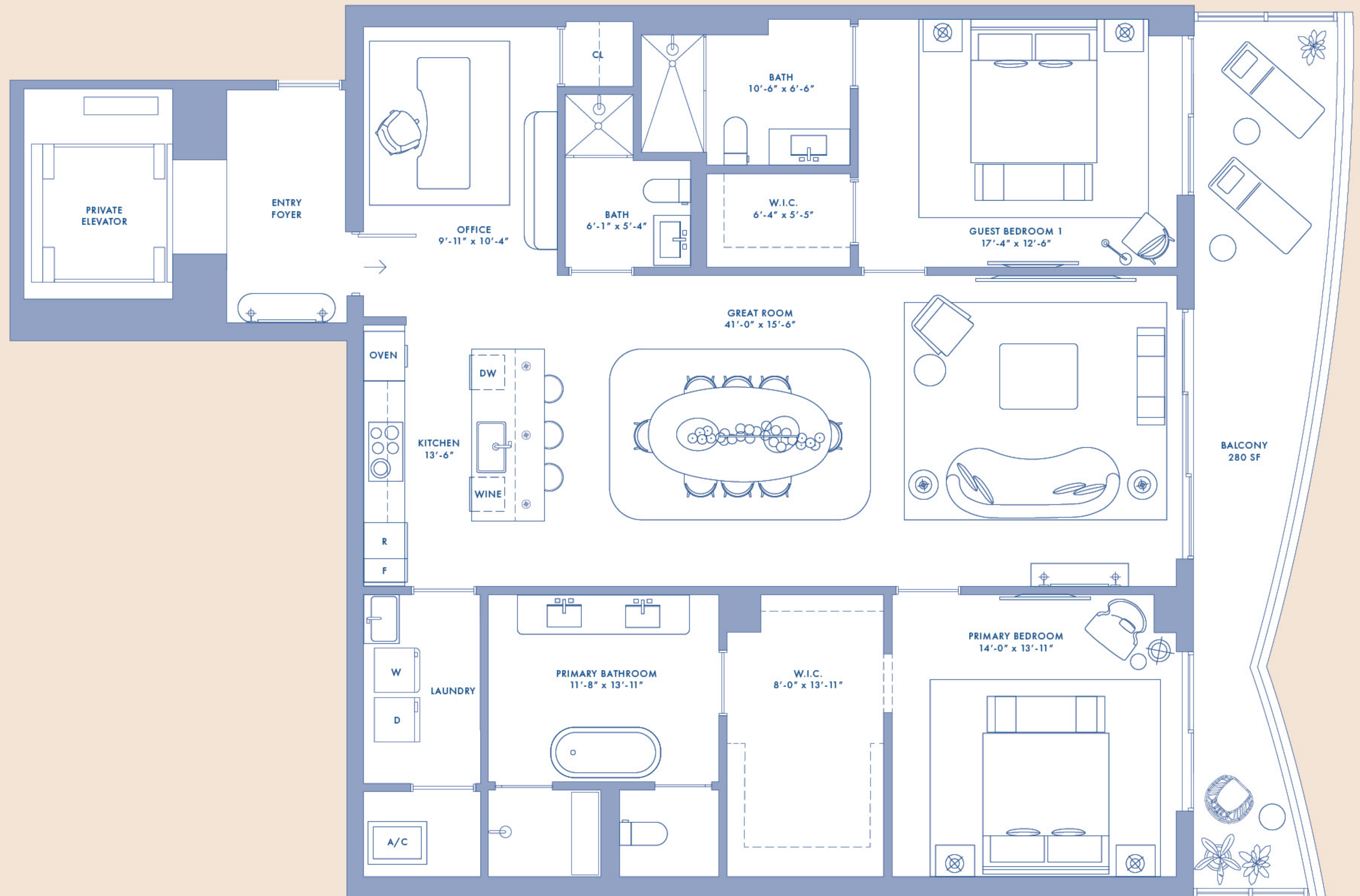
RESIDENCE 02

LEVEL 62-78 CONTEMPORANEO

2 Bedrooms
Den
3 Bathrooms

INTERIOR AREA
2,018 SQ. FT. / 187 SQ. M.

TERRACE AREA
280 SQ. FT. / 26 SQ. M.



NOT TO SCALE

Stated square footages and dimensions are measured to the exterior boundaries of the exterior walls and the centerline of interior demising walls and in fact vary from the square footages and dimensions that would be determined by using the description and definition of the "Unit" set forth in the Declaration (which generally only includes the interior airspace between the perimeter walls and excludes all interior structural components and other common elements). This method is generally used in sales materials and is provided to allow a prospective buyer to compare the Units with units in other condominium projects that utilize the same method. For your reference, the area of the Unit, determined in accordance with these defined unit boundaries, is set forth on Exhibit "3" to the Declaration. Measurements of rooms set forth on this floor plan are generally taken at the farthest points of each given room (as if the room were a perfect rectangle), without regard for any cutouts or variations. Accordingly, the area of the actual room will typically be smaller than the product obtained by multiplying the stated length and width. All dimensions are estimates which will vary with actual construction, and all floor plans, specifications and other development plans are subject to change and will not necessarily accurately reflect the final plans and specifications for the development. All depictions of appliances, counters, soffits, floor coverings and other matters of detail, including, without limitation, items of finish and decoration, are conceptual only and are not necessarily included in each Unit. EQUAL HOUSING OPPORTUNITY. The complete offering terms are in a CPS-12 application available from the offeror. File NO. CP23-0069. Warning: the California department of real estate has not inspected, examined, or qualified this offering. Registration certificate file NO. 179439RC-OOSRO. This advertisement is a solicitation for the sale of units in 1420 S. Miami Avenue Condominium & N.J. Registration NO. 24-04-0005. Carmel & Reyes PLLC shall not be held liable or responsible for the failure by client and/or its agents to provide complete and accurate information in the disclosure documents and/or representations. Under no circumstances shall Carmel & Reyes PLLC be liable for any claims, direct, indirect, incidental, special, or consequential damages arising out of your failure to provide complete and accurate information and/or to adequately review a document for accuracy prior to its dissemination or use.

RESIDENCE 03

LEVEL 62-78 CONTEMPORANEO

2 Bedrooms
Den
3 Bathrooms

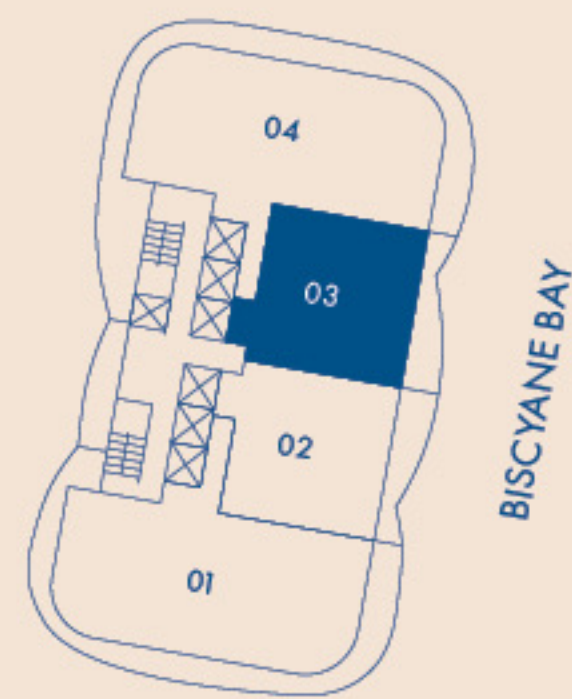
INTERIOR AREA

2,018 SQ. FT. / 187 SQ. M.

TERRACE AREA

280 SQ. FT. / 26 SQ. M.

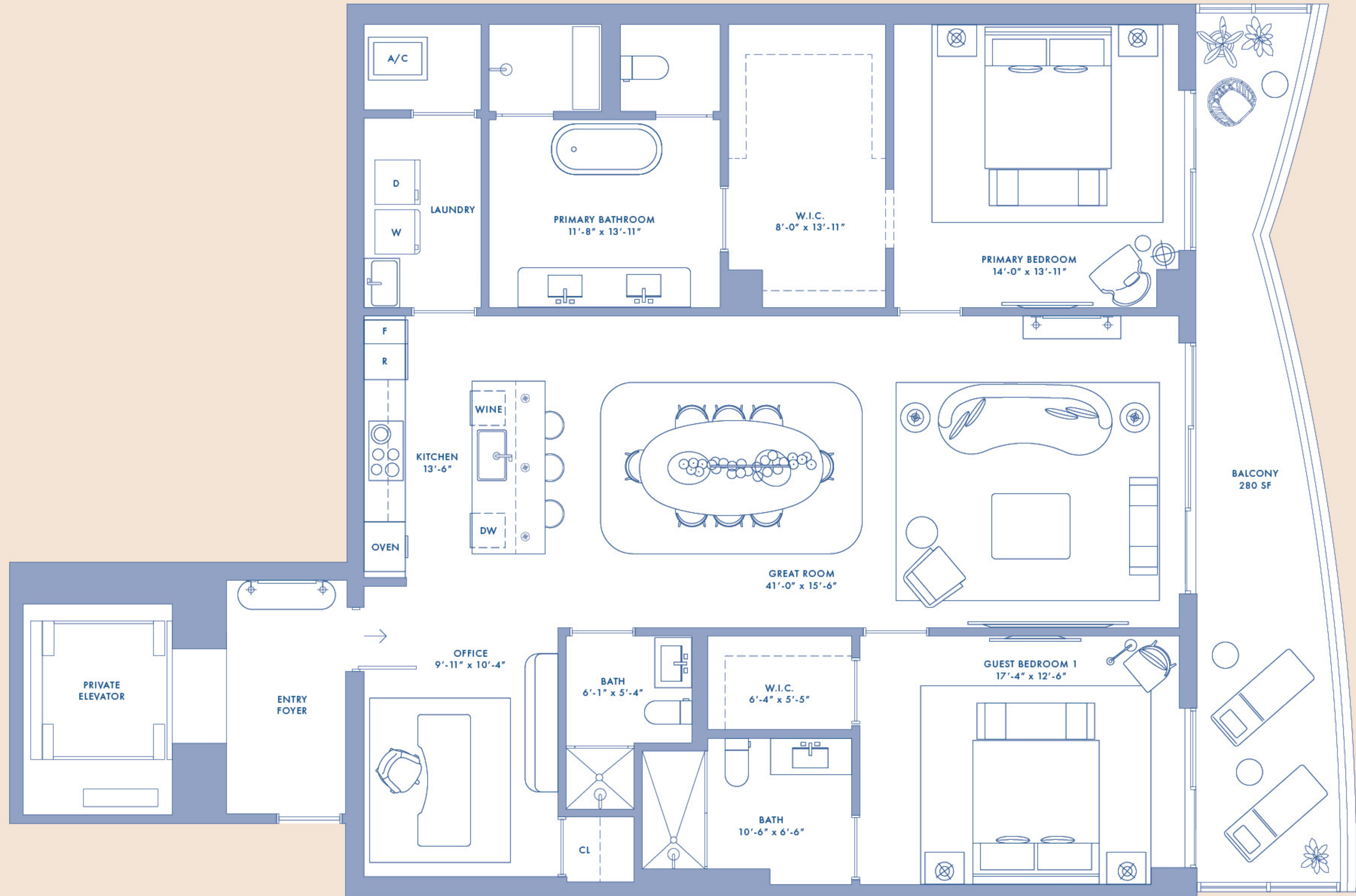
BRICKELL SKYLINE



SIMPSON PARK



NOT TO SCALE



Stated square footages and dimensions are measured to the exterior boundaries of the exterior walls and the centerline of interior demising walls and in fact vary from the square footage and dimensions that would be determined by using the description and definition of the "Unit" set forth in the Declaration (which generally only includes the interior airspace between the perimeter walls and excludes all interior structural components and other common elements). This method is generally used in sales materials and is provided to allow a prospective buyer to compare the Units with units in other condominium projects that utilize the same method. For your reference, the area of the Unit, determined in accordance with these defined unit boundaries, is set forth on Exhibit "3" to the Declaration. Measurements of rooms set forth on this floor plan are generally taken at the farthest points of each given room (as if the room were a perfect rectangle), without regard for any cutouts or variations. Accordingly, the area of the actual room will typically be smaller than the product obtained by multiplying the stated length and width. All dimensions are estimates which will vary with actual construction, and all floor plans, specifications and other development plans are subject to change and will not necessarily accurately reflect the final plans and specifications for the development. All depictions of appliances, counters, soffits, floor coverings and other matters of detail, including, without limitation, items of finish and decoration, are conceptual only and are not necessarily included in each Unit. EQUAL HOUSING OPPORTUNITY. The complete offering terms are in a CPS-12 application available from the offeror. File NO.CP23-0069. Warning: the California department of real estate has not inspected, examined, or qualified this offering. Registration certificate file NO.179439RC-OOSRO. This advertisement is a solicitation for the sale of units in 1420 S. Miami Avenue Condominium & N.J. Registration NO.24-04-0005. Carmel & Reyes PLLC shall not be held liable or responsible for the failure by client and/or its agents to provide complete and accurate information in the disclosure documents and/or representations. Under no circumstances shall Carmel & Reyes PLLC be liable for any claims, direct, indirect, incidental, special, or consequential damages arising out of your failure to provide complete and accurate information and/or to adequately review a document for accuracy prior to its dissemination or use.

RESIDENCE 04

LEVEL 62-78 CONTEMPORANEO

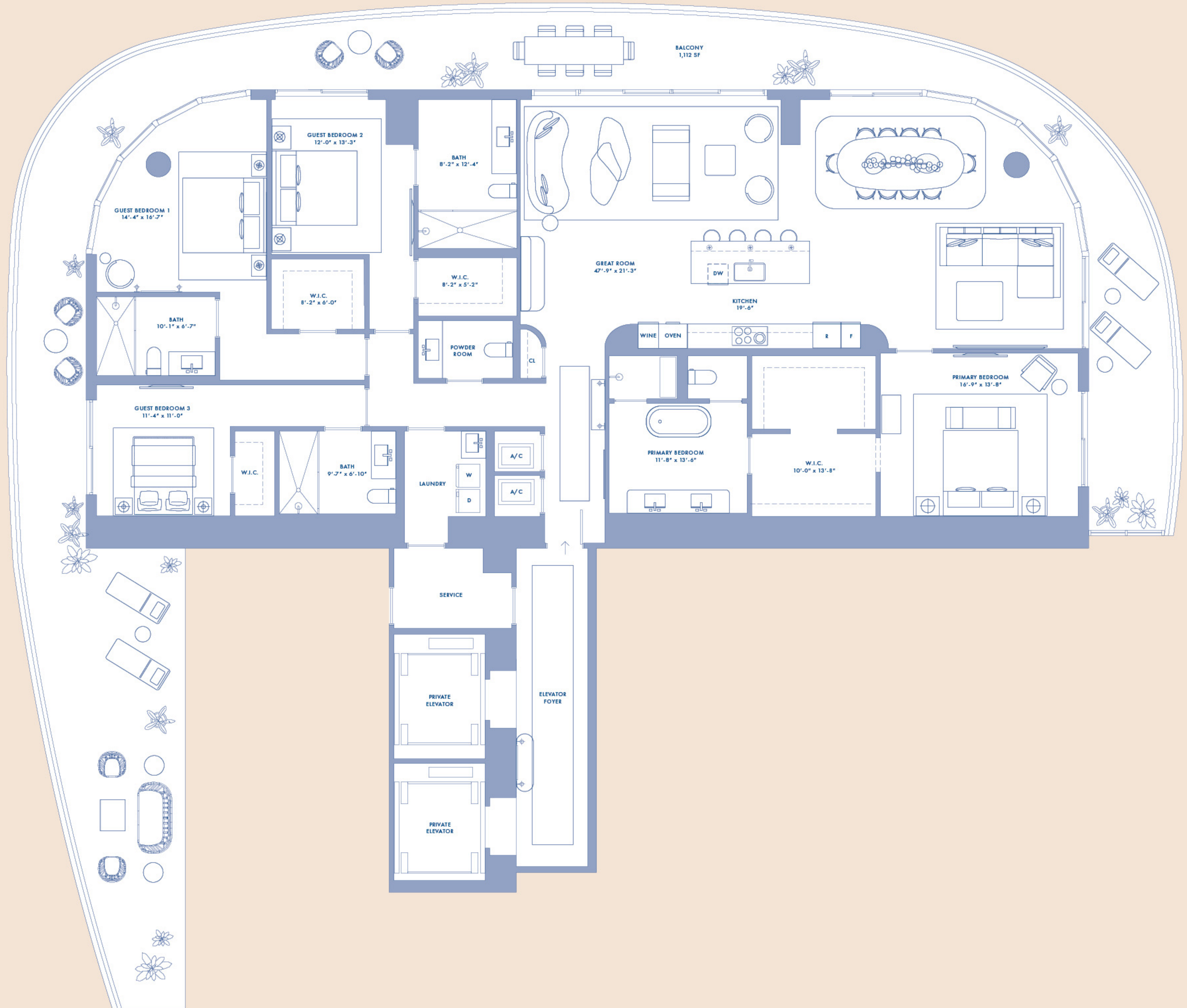
- 4 Bedrooms
- 4 Bathrooms
- 1 Powder Room
- Service Quarters

INTERIOR AREA

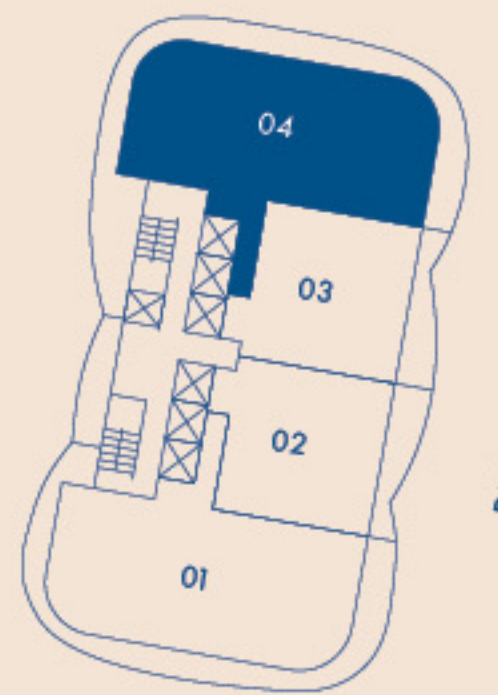
3,465 SQ. FT. / 322 SQ. M

TERRACE AREA

1,558 SQ. FT. / 145 SQ. M



BRICKELL SKYLINE



NOT TO SCALE

Stated square footages and dimensions are measured to the exterior boundaries of the exterior walls and the centerline of interior demising walls and in fact vary from the square footage and dimensions that would be determined by using the description and definition of the "Unit" set forth in the Declaration (which generally only includes the interior airspace between the perimeter walls and excludes all interior structural components and other common elements). This method is generally used in sales materials and is provided to allow a prospective buyer to compare the Units with units in other condominium projects that utilize the same method. For your reference, the area of the Unit, determined in accordance with these defined unit boundaries, is set forth on Exhibit "3" to the Declaration. Measurements of rooms set forth on this floor plan are generally taken at the farthest points of each given room (as if the room were a perfect rectangle), without regard for any cutouts or variations. Accordingly, the area of the actual room will typically be smaller than the product obtained by multiplying the stated length and width. All dimensions are estimates which will vary with actual construction, and all floor plans, specifications and other development plans are subject to change and will not necessarily accurately reflect the final plans and specifications for the development. All depictions of appliances, counters, soffits, floor coverings and other matters of detail, including, without limitation, items of finish and decoration, are conceptual only and are not necessarily included in each Unit. EQUAL HOUSING OPPORTUNITY. The complete offering terms are in a CPS-12 application available from the offeror. File NO.CP23-0069. Warning: the California department of real estate has not inspected, examined, or qualified this offering. Registration certificate file NO.179439RC-OOSRO. This advertisement is a solicitation for the sale of units in 1420 S. Miami Avenue Condominium & N.J. Registration NO.24-04-0005. Carmel & Reyes PLLC shall not be held liable or responsible for the failure by client and/or its agents to provide complete and accurate information in the disclosure documents and/or representations. Under no circumstances shall Carmel & Reyes PLLC be liable for any claims, direct, indirect, incidental, special, or consequential damages arising out of your failure to provide complete and accurate information and/or to adequately review a document for accuracy prior to its dissemination or use.