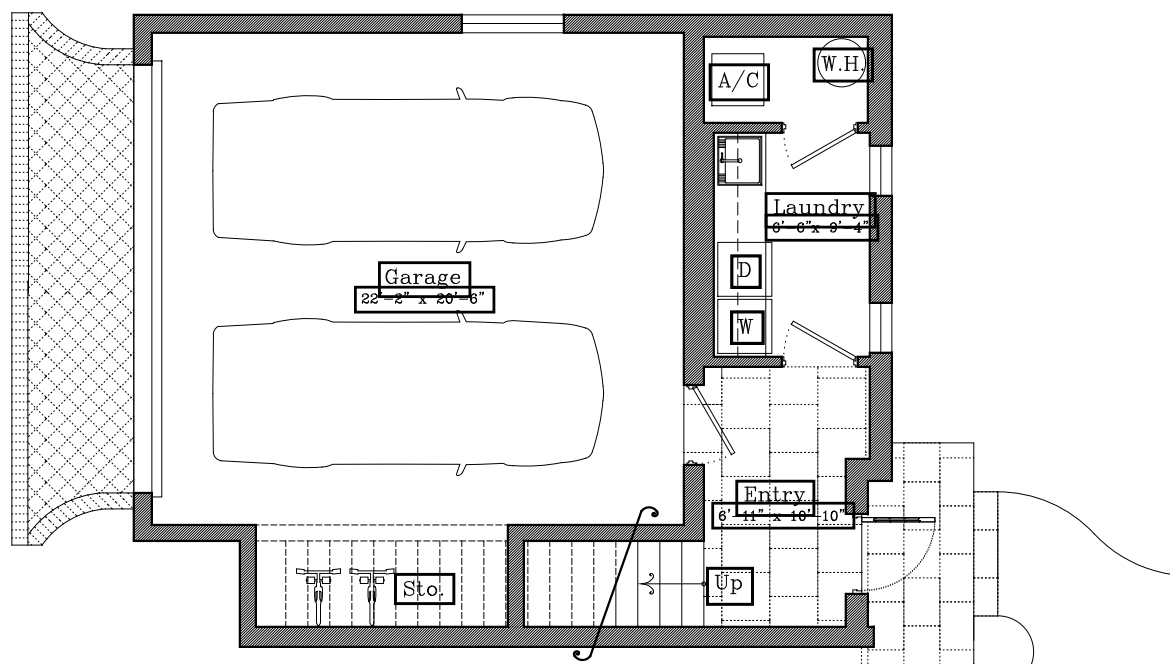
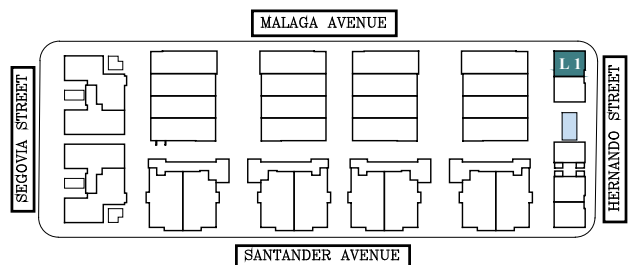




**THE VILLAGE**  
AT CORAL GABLES



LOFTS



**L1**  
First Floor

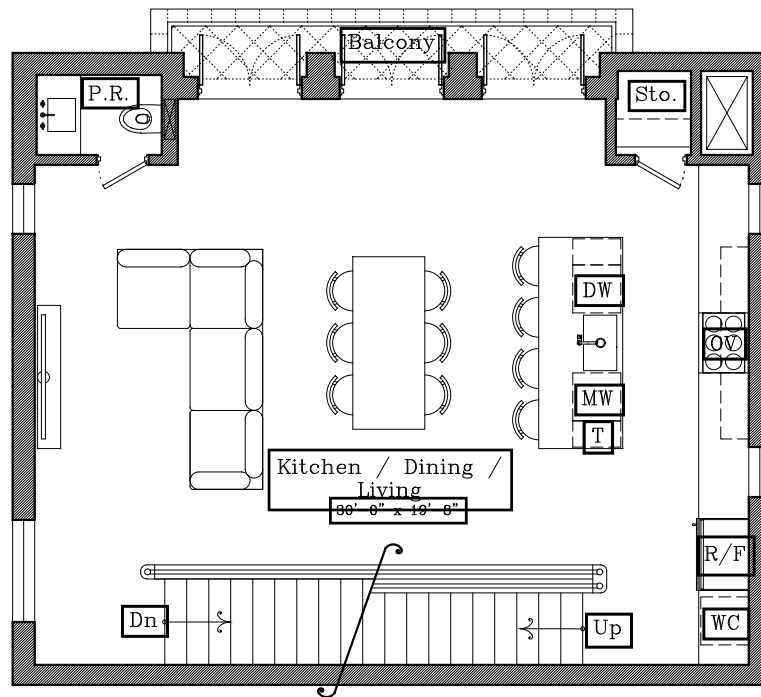
AC INTERIOR AREA	1,881 SF
BALCONY	52 SF
GARAGE	542 SF

TOTAL RESIDENCE	<b>2,475 SF</b>
ADJUSTED AREA	2,152 SF

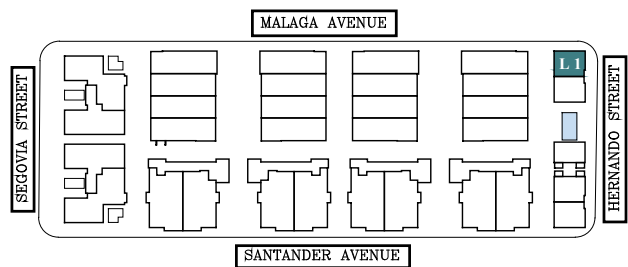




**THE VILLAGE**  
AT CORAL GABLES



LOFTS



**L1**  
**Second Floor**

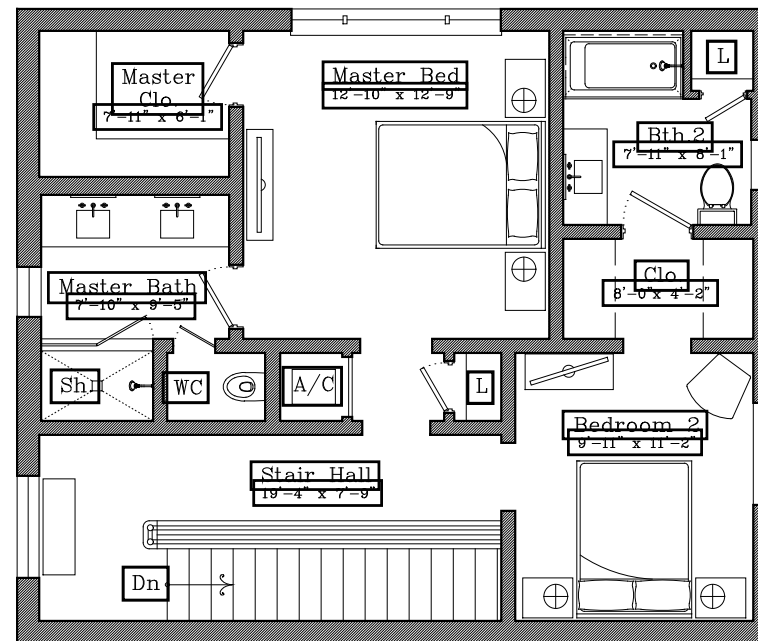
AC INTERIOR AREA	1,881 SF
BALCONY	52 SF
GARAGE	542 SF

TOTAL RESIDENCE	<b>2,475 SF</b>
ADJUSTED AREA	2,152 SF

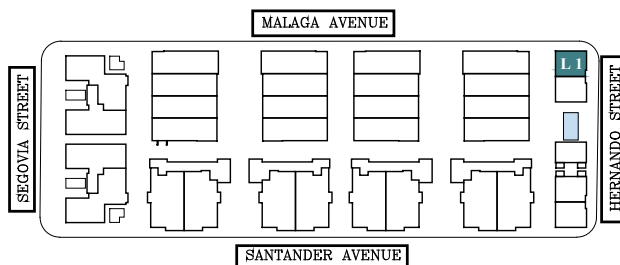




THE VILLAGE  
AT CORAL GABLES



LOFTS



L1  
Third Floor

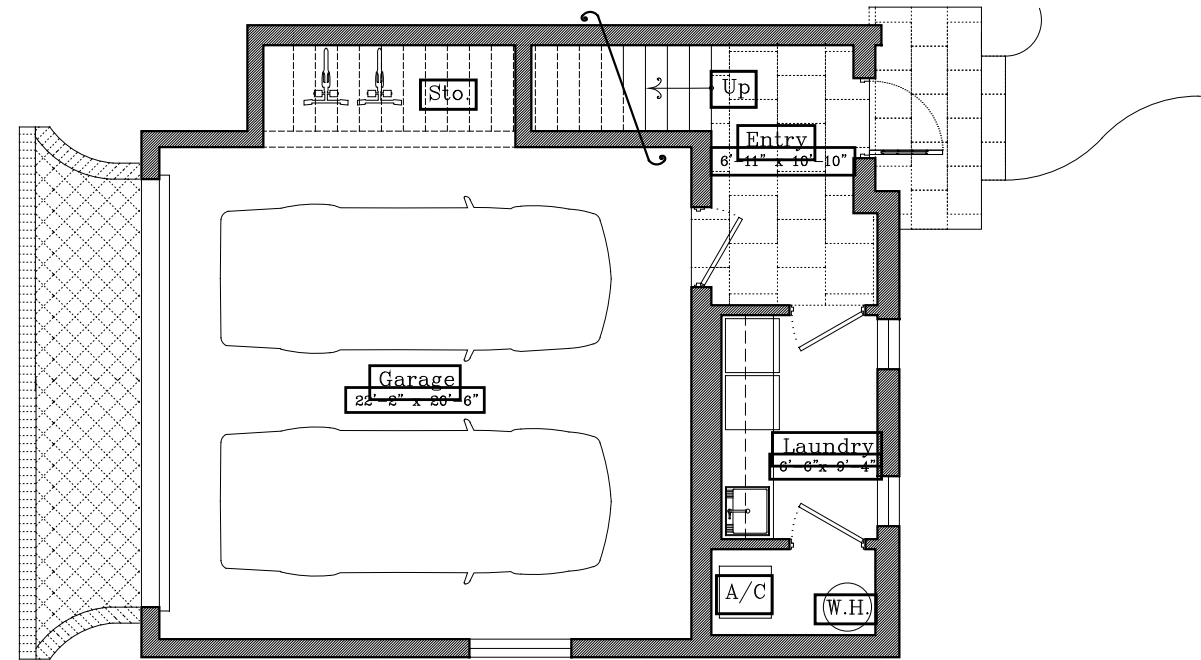
AC INTERIOR AREA	1,881 SF
BALCONY	52 SF
GARAGE	542 SF

TOTAL RESIDENCE	<b>2,475 SF</b>
ADJUSTED AREA	2,152 SF

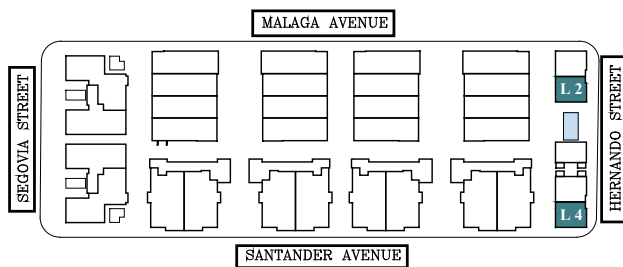




**THE VILLAGE**  
AT CORAL GABLES



LOFTS



**L2-L4**  
**First Floor**

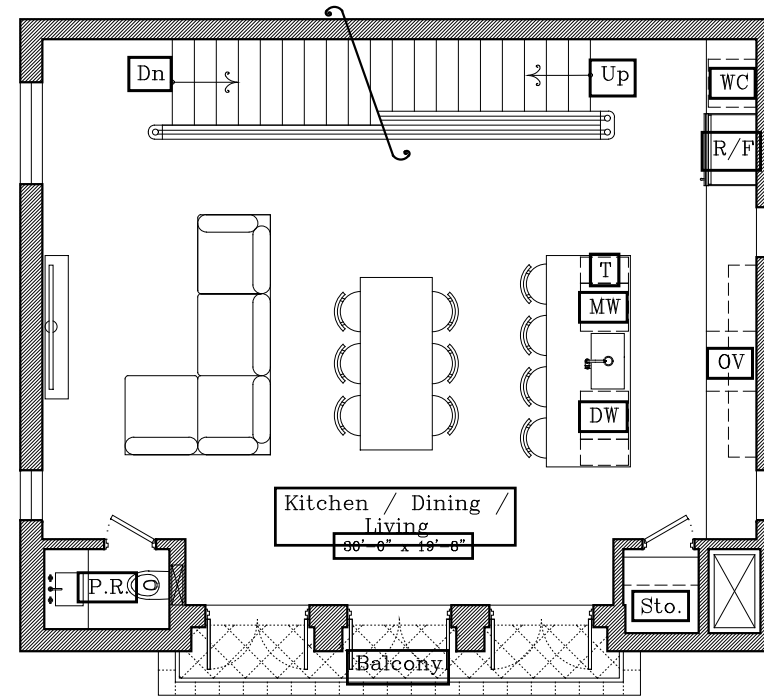
AC INTERIOR AREA	1,881 SF
BALCONY	52 SF
GARAGE	542 SF

TOTAL RESIDENCE	<b>2,475 SF</b>
ADJUSTED AREA	2,152 SF

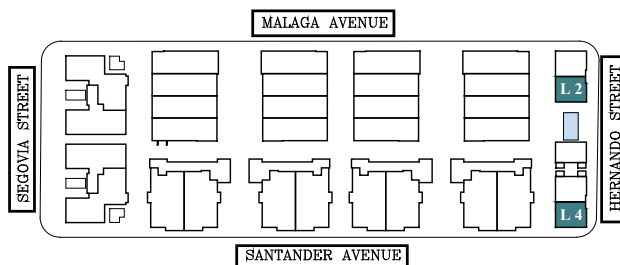




**THE VILLAGE**  
AT CORAL GABLES



LOFTS



**L2-L4**  
**Second Floor**

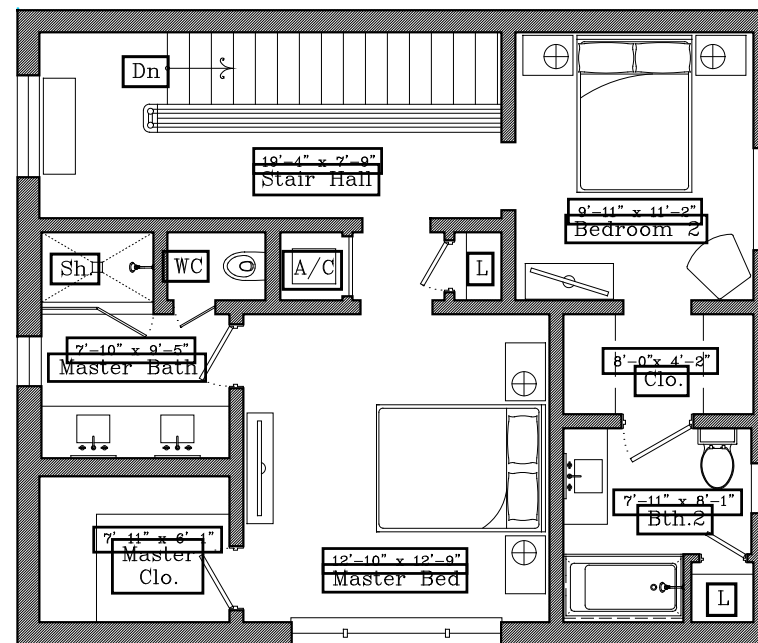
AC INTERIOR AREA	1,881 SF
BALCONY	52 SF
GARAGE	542 SF

TOTAL RESIDENCE	<b>2,475 SF</b>
ADJUSTED AREA	2,152 SF

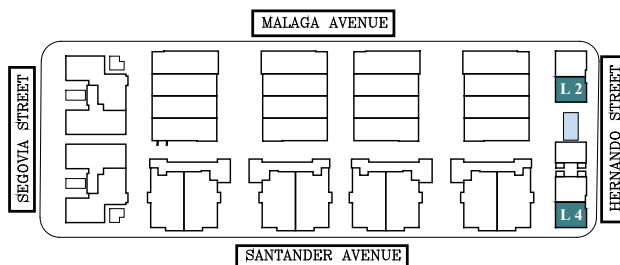




**THE VILLAGE**  
AT CORAL GABLES



LOFTS



**L2-L4**  
**Third Floor**

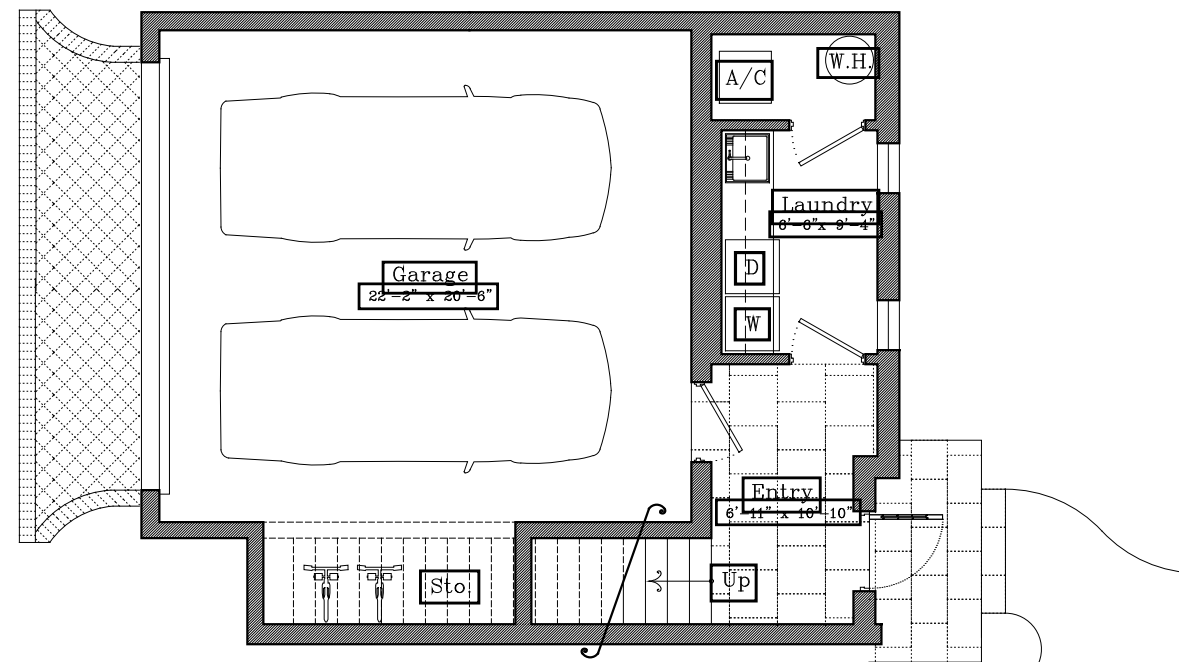
AC INTERIOR AREA	1,881 SF
BALCONY	52 SF
GARAGE	542 SF

TOTAL RESIDENCE	<b>2,475 SF</b>
ADJUSTED AREA	2,152 SF

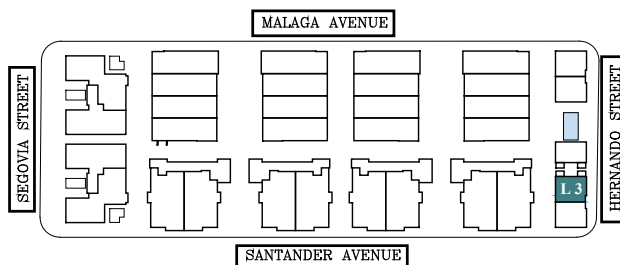




THE VILLAGE  
AT CORAL GABLES



LOFTS



L3  
First Floor

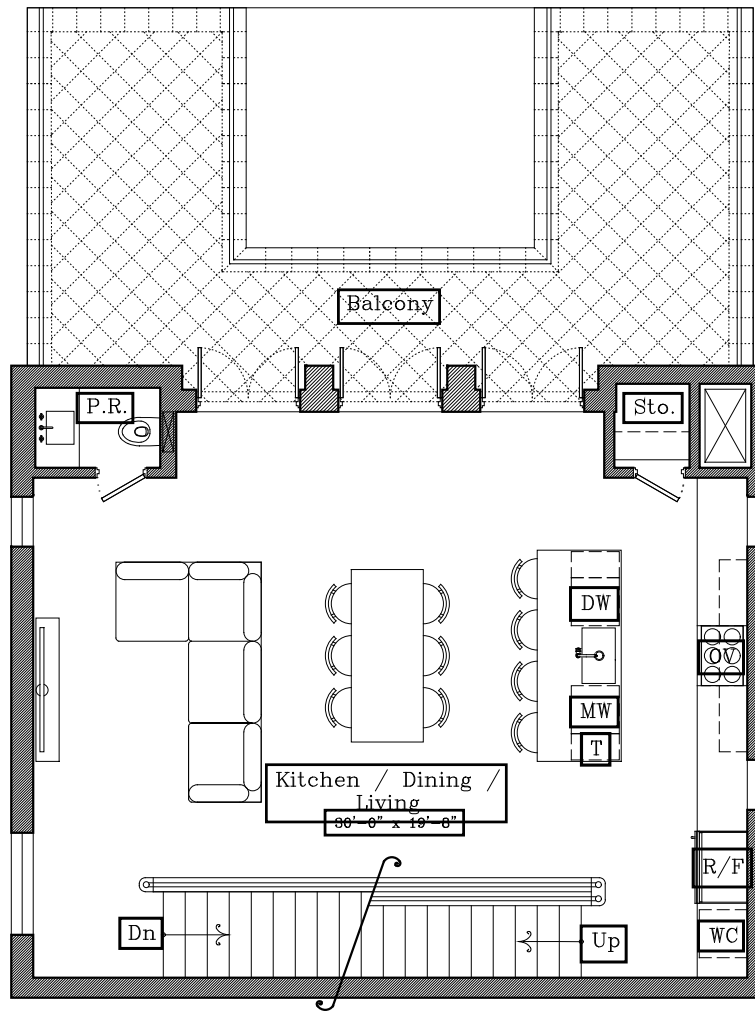
AC INTERIOR AREA	1,881 SF
BALCONY	346 SF
GARAGE	542 SF

TOTAL RESIDENCE	<b>2,769 SF</b>
ADJUSTED AREA	2,152 SF

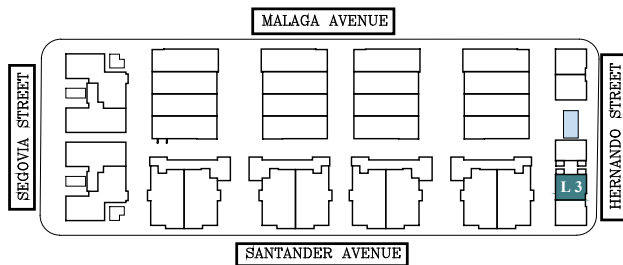




**THE VILLAGE**  
AT CORAL GABLES



LOFTS



**L3**  
**Second Floor**

AC INTERIOR AREA	1,881 SF
BALCONY	346 SF
GARAGE	542 SF

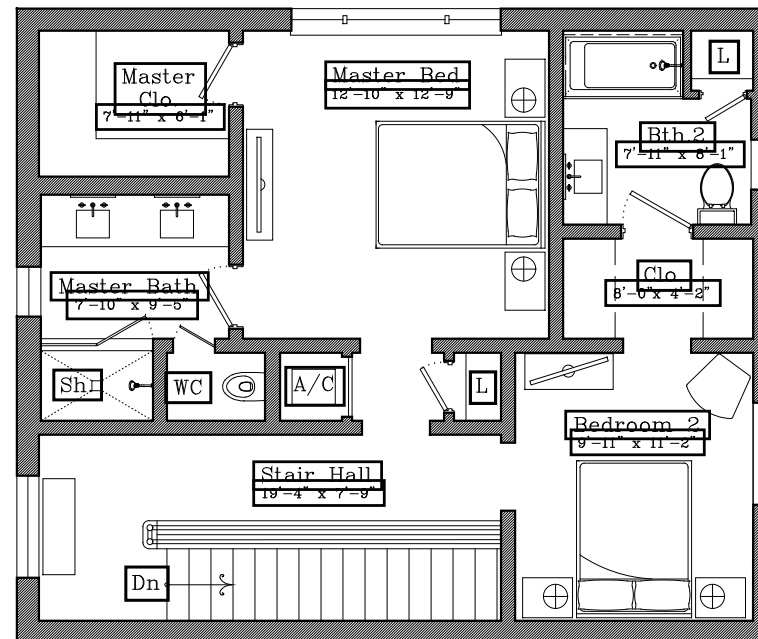
TOTAL RESIDENCE	<b>2,769 SF</b>
ADJUSTED AREA	2,152 SF



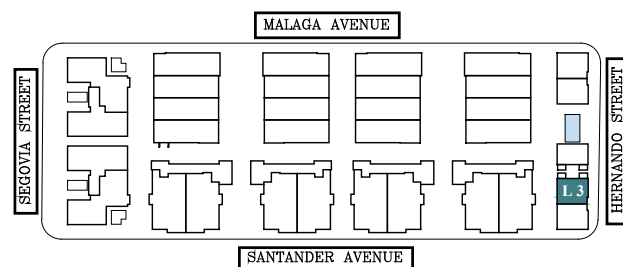




THE VILLAGE  
AT CORAL GABLES



LOFTS



L3  
Third Floor

AC INTERIOR AREA	1,881 SF
BALCONY	346 SF
GARAGE	542 SF

TOTAL RESIDENCE	2,769 SF
ADJUSTED AREA	2,152 SF

