



MANDARIN ORIENTAL

THE RESIDENCES
WEST PALM BEACH



ORAL REPRESENTATIONS CANNOT BE RELIED UPON AS CORRECTLY STATING THE REPRESENTATIONS OF THE DEVELOPER. FOR CORRECT REPRESENTATIONS, MAKE REFERENCE TO THIS BROCHURE AND TO THE DOCUMENTS REQUIRED BY SECTION 718.503, FLORIDA STATUTES, TO BE FURNISHED BY A DEVELOPER TO A BUYER OR LESSEE.

Set along a private shore of the Intracoastal Waterway and enveloped in tranquil tropical gardens, Mandarin Oriental Residences, West Palm Beach introduces a new era of refined waterfront living.

Developed as an intimate sanctuary within a vibrant coastal setting, this limited collection of 87 residences, designed by Safdie Architects, led by Moshe Safdie, presents a refined architectural presence and a rare sense of closeness to the coast that few addresses can claim.





Life by the water unfolds as a seamless extension of home — calming, inviting, and beautifully serviced.

Thoughtfully crafted spaces open gracefully to the Intracoastal Waterway, creating an atmosphere that invites quiet renewal and effortless gathering.

From private cabanas to a refined poolside bar and resort-style pool, every detail is designed for purposeful, unhurried living.





Seamless indoor-outdoor living unfolds through architecture rooted in the landscape, where nature becomes part of the rhythm of daily life.

Designed by celebrated landscape architecture firm ENEA, layered plantings shape natural thresholds between pathways, gardens, and private terraces, while shaded walkways meander through sculpted greenery and filtered light. Quiet outdoor alcoves framed by richly textural foliage offer moments of pause and privacy, creating a setting that feels serene and immersive, yet quietly removed and deeply connected to its surroundings.



Life at Mandarin Oriental Residences, West Palm Beach, offers a way of living shaped by an ethos of intuitive, thoughtful service. Daily experiences are elevated through care, craft, and quiet precision, while details, both seen and unseen, are thoughtfully orchestrated to transform the everyday into something truly exceptional.





Rooted in Mandarin Oriental's award-winning wellness philosophy, centered on mindfulness, balance, and time-honored Asian practices, spa and wellness experiences at Mandarin Oriental Residences, West Palm Beach, are crafted to support physical, emotional, and spiritual wellbeing.

Here, wellbeing is not an amenity apart, but a rhythm woven into the fabric of residential life.



Illustration is artist's concept. E. & O. E. The design, construction, and building of any dock and/or boat slips are subject to obtaining the appropriate federal, state and local permits and approvals for same and are otherwise subject to change in the developer's sole and absolute discretion. See Legal Disclaimers on Final Page.

Enjoy elegant environments where memories and moments are shared in spaces designed by acclaimed interiors firm Studio Munge.

An intimate dinner with a private chef, a relaxed evening of cinema, a competitive pickleball match or virtual golf game. The expansive and thoughtfully appointed amenities of Mandarin Oriental Residences, West Palm Beach inspire a life of endless discovery.



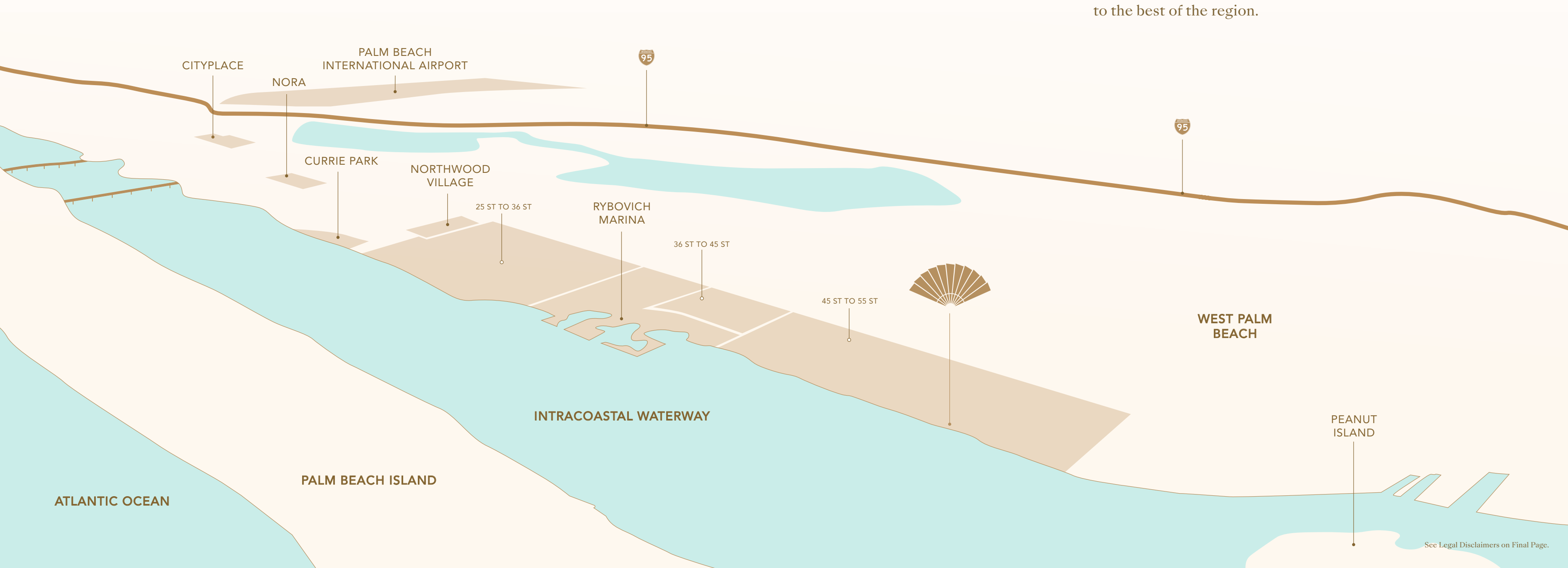
With effortless access to the Intracoastal Waterway and the open Atlantic beyond, West Palm Beach becomes a gateway to a life lived beautifully on the water.

From sunlit afternoons cruising to spontaneous departures along the coast, every journey feels seamless and entirely your own. Just a few hours offshore, the Bahamas awaits, offering an easy escape into turquoise horizons. By yacht or seaplane, the world's most coveted destinations are always within reach.



West Palm Beach offers a thoughtful blend of coastal ease and city sophistication, with many of the area's most compelling destinations just moments away.

The nearby Nora District brings together boutique retail and design-focused experiences, while Rybovich Marina provides direct access to one of the region's premier yachting enclaves and the open waterways beyond. With Palm Beach's renowned golf, arts, and signature landmarks close at hand, the setting achieves a rare balance — quietly residential, yet seamlessly connected to the best of the region.



A VISIONARY TEAM

Great Gulf

Established in 1975, Great Gulf Group has spent over five decades shaping places defined by thoughtful design, enduring quality, and a deep understanding of how people live.

With projects across Canada and the United States, the company's work spans residential, commercial, and mixed-use developments, delivered through an integrated platform that includes development, construction management, and advanced building technologies. From award-winning low-rise communities to landmark high-rise residences, each project reflects a long-term commitment to craft and precision.

Great Gulf is known for collaborating with some of the world's most respected architects and design partners, including Frank Gehry and Moshe Safdie. These partnerships reflect a shared belief in architecture as both expression and experience, brought to life with the expertise to deliver at the highest level.



FORMA
Gehry Partners, Architect
Toronto, Canada





MANDARIN ORIENTAL, BANGKOK
Bangkok, Thailand

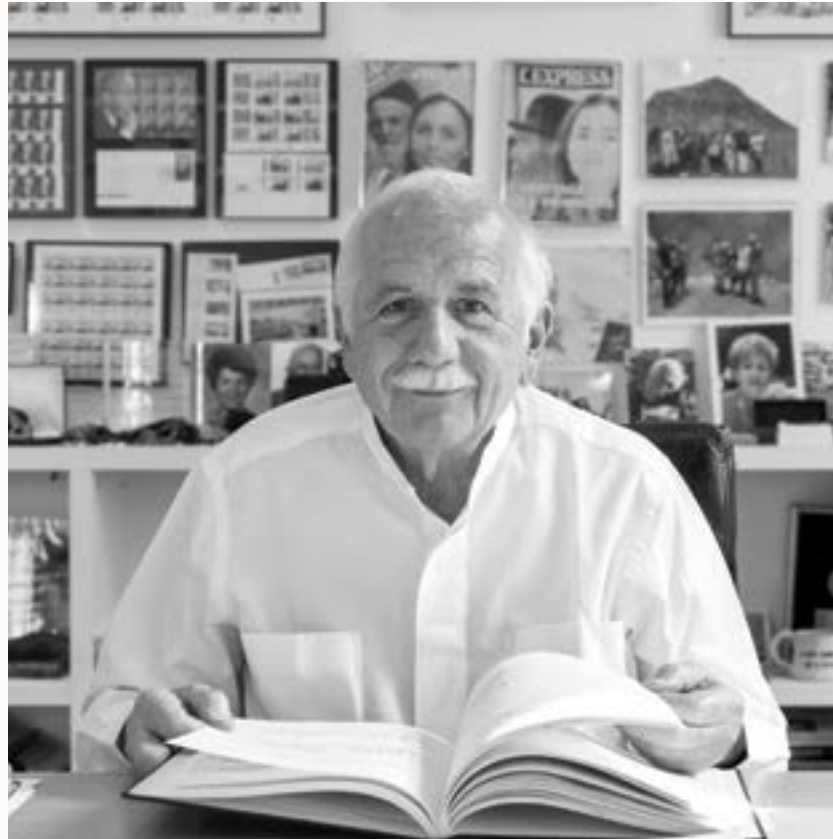
Mandarin Oriental

Mandarin Oriental is the award-winning owner and operator of some of the world's most luxurious hotels, resorts and residences. Each outstanding property reflects the Group's dual Asian heritage, while proudly distilling the Essence of the Destination, reflected in every hotel's own fan — carefully crafted by local artisans.

Driven by a passion for the exceptional, every day, everywhere, the Group's mission is to craft time-enriching experiences that transform the ordinary to the exceptional and guests to fans through its legendary service. Mandarin Oriental continues to drive its reputation as an innovative leader in luxury hospitality, delivering sustainable growth over the long term.



MASTERS OF DESIGN



Safdie Architects ARCHITECTURE

Safdie Architects is an internationally recognized architecture firm known for its human-centered approach and transformative urban design. Founded by Moshe Safdie, the firm's work spans cultural, residential, and mixed-use projects around the world, with a focus on light, nature, and community. Safdie Architects brings a legacy of thoughtful design that prioritizes livability, sustainability, and timeless architectural expression.

“When architecture represents the essence of the place where it is built, it resonates with people in a way that is long lasting and profound.” — Moshe Safdie



MARINA BAY SANDS
Singapore



JEWEL
Singapore



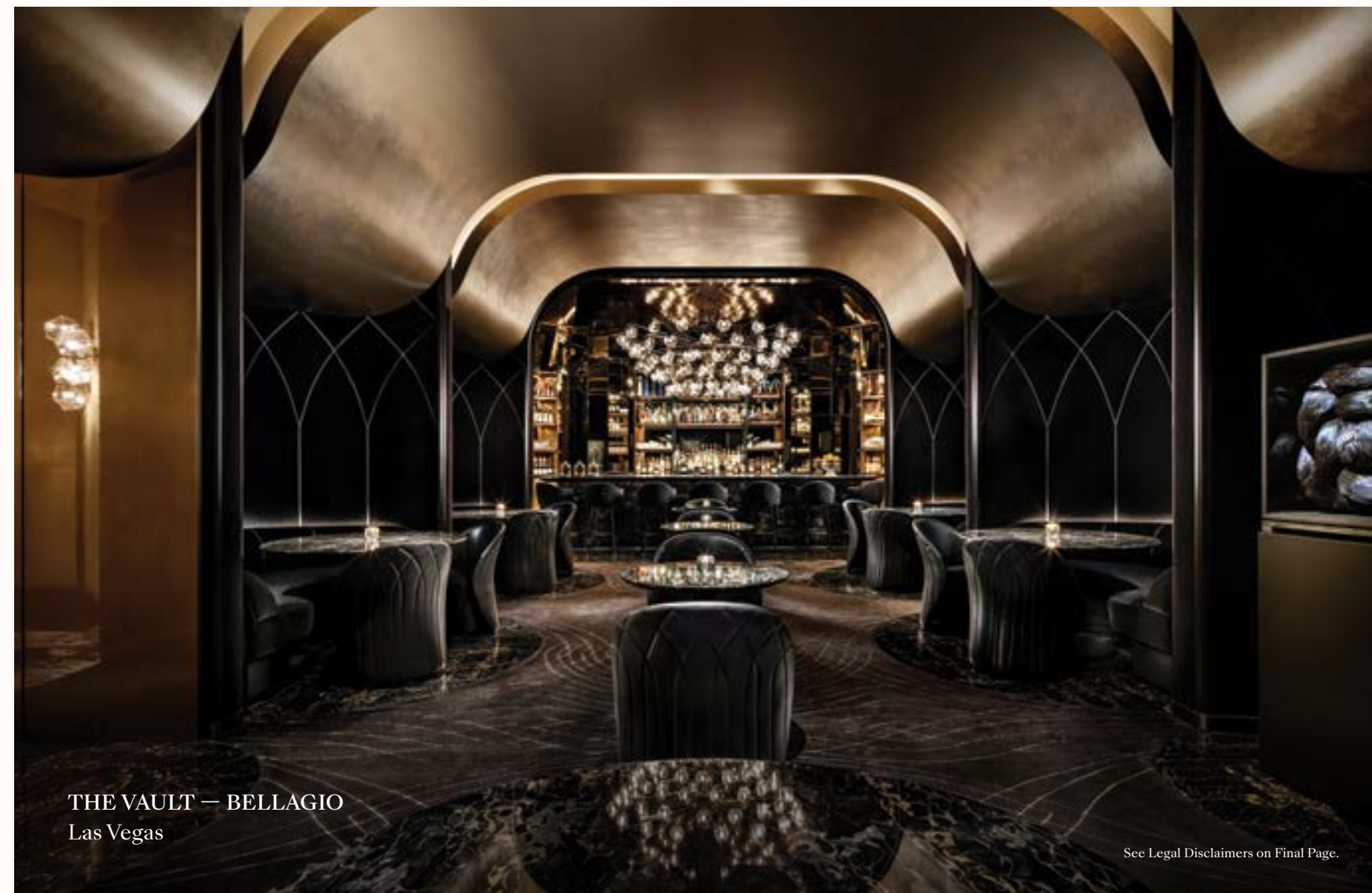
Studio Munge
INTERIORS

Studio Munge is a multidisciplinary design studio with over two decades of experience guided by the belief that thoughtfully crafted environments shape how people feel, move, and connect. Led by Alessandro Munge, the studio works across architecture, interiors, landscapes, and bespoke furnishings to shape environments that feel immersive, considered, and emotionally engaging. Balancing precision with imagination, Studio Munge creates distinctive spaces that elevate contemporary luxury, translating global perspective and a strong sense of place into meaningful, lasting experiences.

“Whatever we are designing — whether a hotel, a restaurant or a home — we like to pull people away from the noise and escape to an entirely different place.” — Alessandro Munge



NOBU HOTEL AND RESIDENCES
Toronto, Canada



THE VAULT — BELLAGIO
Las Vegas



ENE LANDSCAPE

Enea is an internationally renowned, award-winning landscape architecture practice founded by Enzo Enea.

With offices in Zurich, Milan, New York, and Miami, the firm creates sustainable, long-lasting landscapes that positively influence local microclimates across a wide range of scales, from private residences and hotels to large-scale projects. Defined by a distinctive design language, Enea's work unites beauty, ecological responsibility, and enduring spatial quality with a strong sense of place.

"A landscape is never finished, it is an ongoing dialogue between time, matter and human presence." — Enzo Enea



CALABASH, JUMBY BAY ISLAND
Antigua



CALABASH, JUMBY BAY ISLAND
Antigua



LEGAL DISCLAIMERS

(a) This is not intended to be an offer to sell, or solicitation to buy, condominium units to residents of any jurisdiction where prohibited by law, and your eligibility for purchase will depend upon your state of residency. This advertisement is not an offering. It is a solicitation of interest in the advertised property. No offering of the advertised units can be made and no deposits can be accepted, or reservations, binding or non-binding, can be made in New York until an offering plan is filed with the New York State Department of Law.

(b) This offering is made only by the prospectus for the condominium, and no statement should be relied upon if not made in the prospectus.

(c) The sketches, renderings, graphic materials, plans, specifications, terms, conditions and statements contained in this brochure are proposed only, and the Developer reserves the right to modify, revise or withdraw any or all of same in its sole discretion and without prior notice. All improvements, designs and construction are subject to first obtaining the appropriate federal, state and local permits and approvals for same.

(d) These drawings and depictions are conceptual only and are for the convenience of reference and including artists renderings. They should not be relied upon as representations, express or implied, of the final detail of the residences or the Condominium. The developer expressly reserves the right to make modifications, revisions, and changes it deems desirable in its sole and absolute discretion.

(e) All depictions of appliances, counters, soffits, floor coverings and other matters of detail, including, without limitation, items of finish and decoration, are conceptual only and are not necessarily included in each Unit.

(f) The photographs contained in this brochure may be stock photography or have been taken off-site and are used to depict the spirit of the lifestyles to be achieved rather than any that may exist or that may be proposed, and are merely intended as illustrations of the activities and concepts depicted therein.

(g) Consult your Agreement and the Prospectus for the items included with the Unit.

(h) Dimensions and square footage are approximate and may vary with actual construction.

(i) The project graphics, renderings and text provided herein are copyrighted works owned by the developer. All rights reserved. Unauthorized reproduction, display or other dissemination of such materials is strictly prohibited and constitutes copyright infringement.

(j) No real estate broker is authorized to make any representations or other statements regarding the projects, and no agreements with, deposits paid to or other arrangements made with any real estate broker are or shall be binding on the developer.

(k) All prices are subject to change at any time and without notice, and do not include optional features or premiums for upgraded units. From time to time, price changes may have occurred that are not yet reflected on this brochure. Please check with the sales center for the most current pricing.

MANDARIN ORIENTAL DISCLAIMER

5400 N Flagler Limited Partnership (“Developer”) is the offeror of the real property being offered for sale as Mandarin Oriental Residences, West Palm Beach (“Residences”). Neither Mandarin Oriental Hotel Group nor any of its affiliates, nor their respective officers, directors, agents or employees (collectively, “MOHG”), are in any way owners, offerors, promoters, issuers or underwriters of, or responsible or liable for, or are making any representations or warranties with respect to, the Developer, construction of the Residences, any offering for sale of the property constituting the Residences, or any increase or return on related investment. MOHG has not assumed and has no liability or responsibility for any financial statements, projections or other financial information contained in any sales and marketing material, prospectus or similar written or oral statements relating to the Residences. Developer has the solo right and responsibility for the manner and means by which the Residences are sold, and all representations in relation to the Residences. Developer has obtained rights to use the “Mandarin Oriental” name and trademarks (“MOHG Marks”) in connection with the Residences subject to the terms and conditions of non-exclusive license agreement(s) which may be terminated at any time upon certain occurrences. The right to use the MOHG Marks in connection with the Residences is thus not guaranteed and no such right is included in the Residence being acquired by any purchaser. If any of the relevant agreements are terminated, or MOHG ceases to manage the Residences for any reason, use of the MOHG Marks in connection with the Residences may be terminated at MOHG’s discretion. All purchases should seek their own legal, financial and professional advice before entering into any agreement in respect of the Residences.

DEVELOPER





MANDARIN ORIENTAL

THE RESIDENCES
WEST PALM BEACH