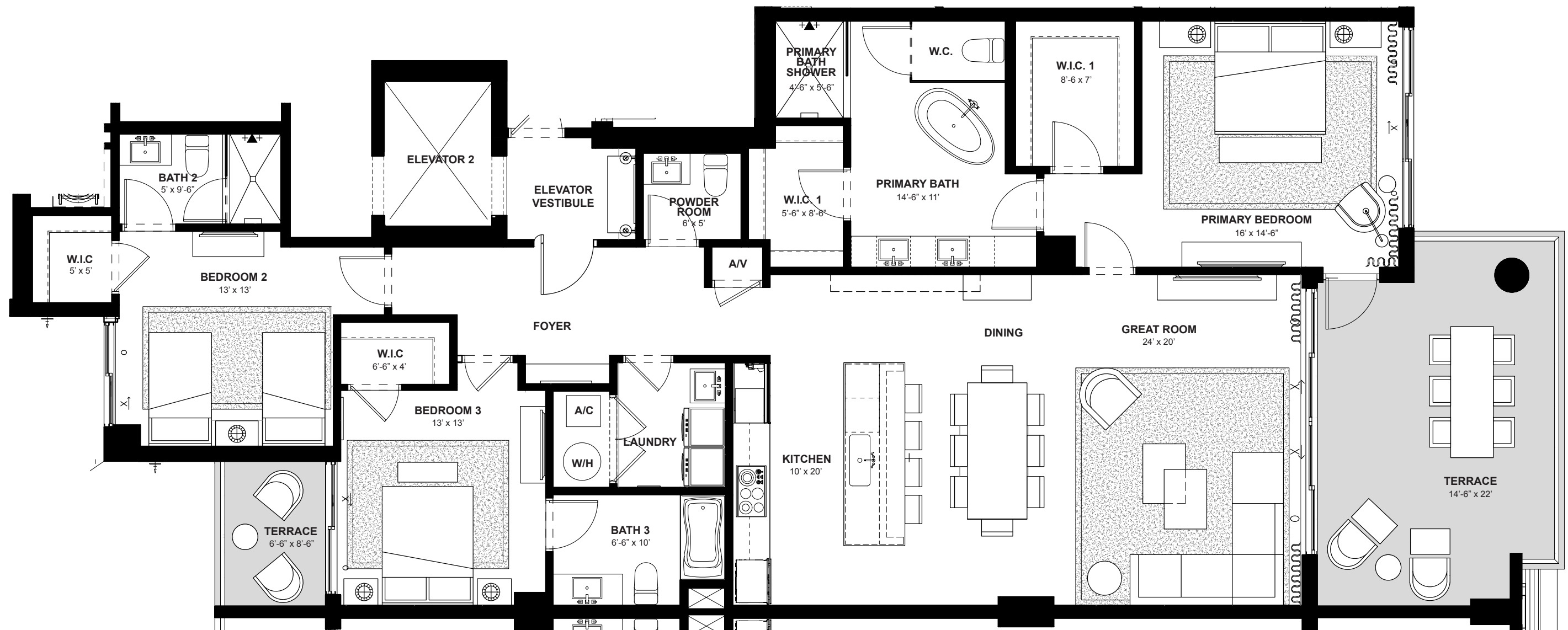
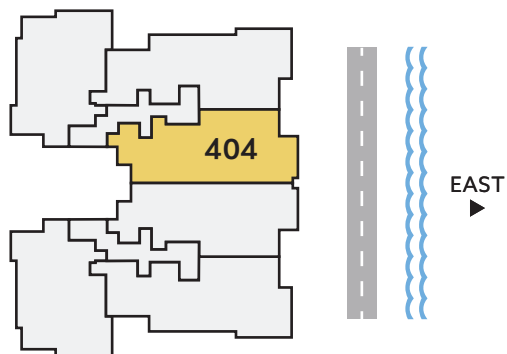


Residence 404




FOURTH FLOOR



EAST DIRECTION	3 BEDROOMS	3.5 BATHS	2,132 A/C LIVING AREA	358 COVERED TERRACES	2,490 TOTAL S.F.
--------------------------	----------------------	---------------------	---------------------------------	--------------------------------	----------------------------

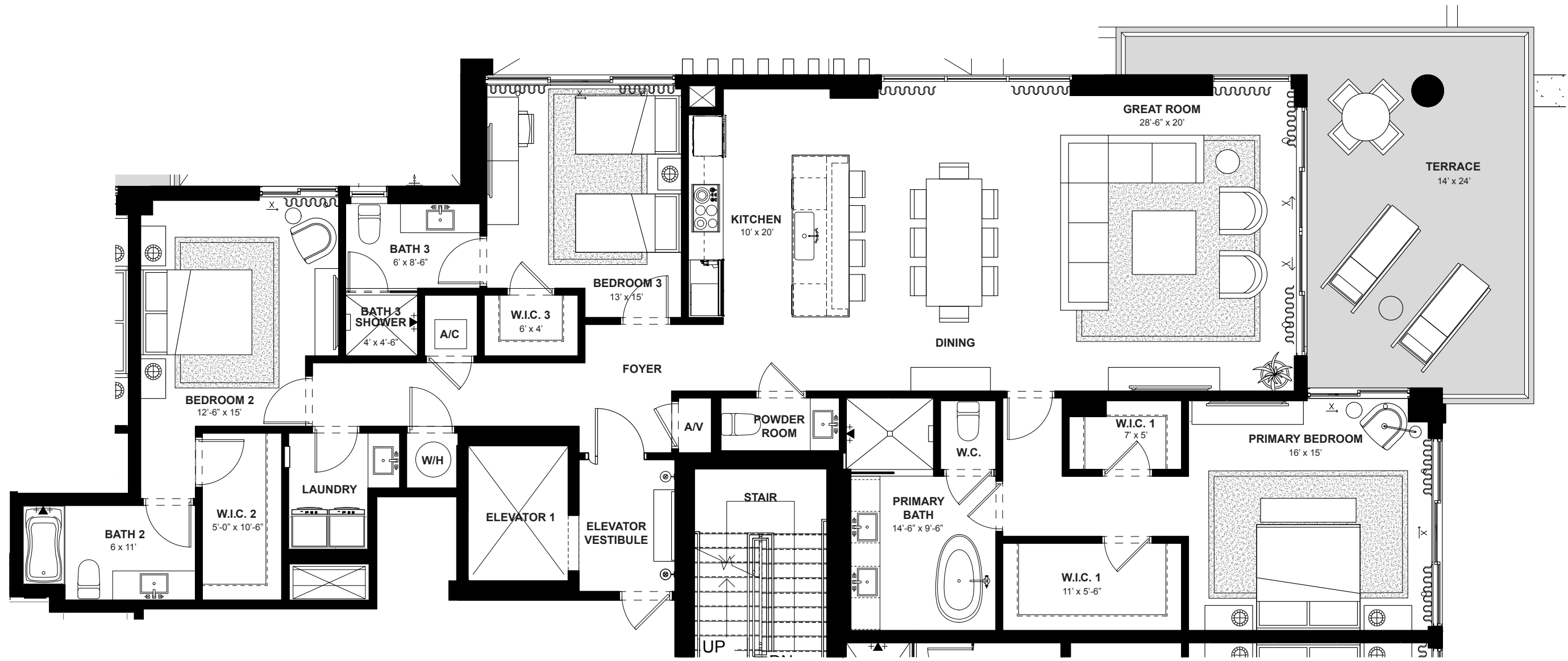
Artist's conceptual illustration only. Subject to modification.

 ORAL REPRESENTATIONS CANNOT BE RELIED UPON AS CORRECTLY STATING REPRESENTATIONS OF THE SELLER. FOR CORRECT REPRESENTATIONS, MAKE REFERENCE TO THIS BROCHURE AND TO THE DOCUMENTS REQUIRED BY SECTION 718.503, FLORIDA STATUTES TO BE FURNISHED BY A SELLER TO A BUYER OR LESSEE.

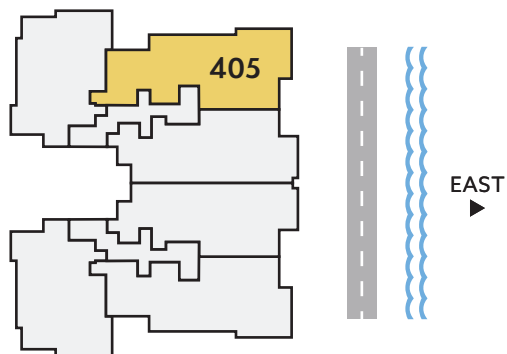
All dimensions, features, and specifications are approximate and subject to change without notice. Square footage listed above represents marketing square footage (please refer to section 3.2 of the Declaration and Exhibit 5 for more information). Brokers warmly welcomed.

SALATO
POMPANO BEACH

Residence 405



FOURTH FLOOR



**NORTH/
EAST**
DIRECTION

3
BEDROOMS

3.5
BATHS

2,308
A/C LIVING
AREA

365
COVERED
TERRACES

2,673
TOTAL S.F.

Artist's conceptual illustration only. Subject to modification.

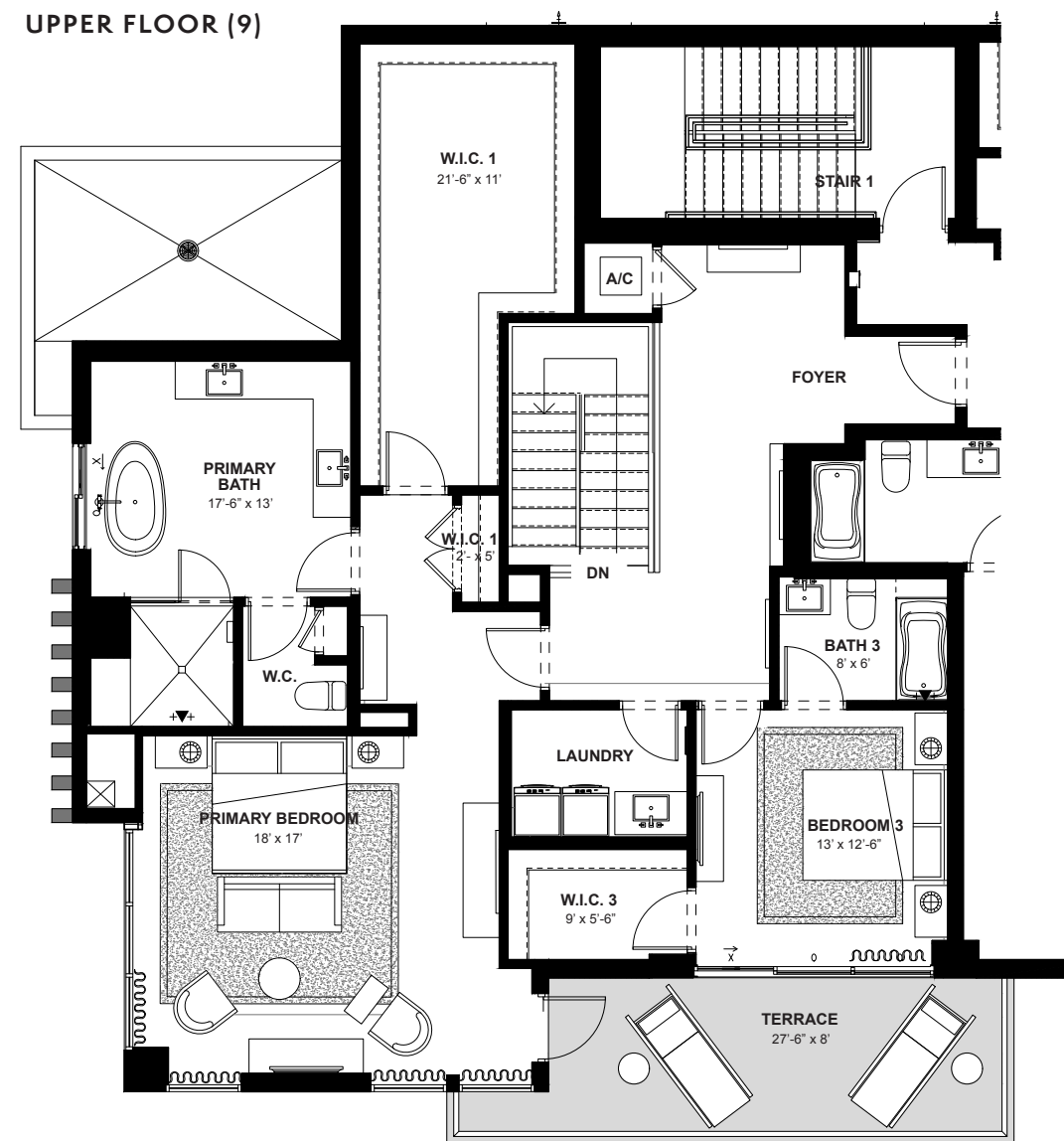
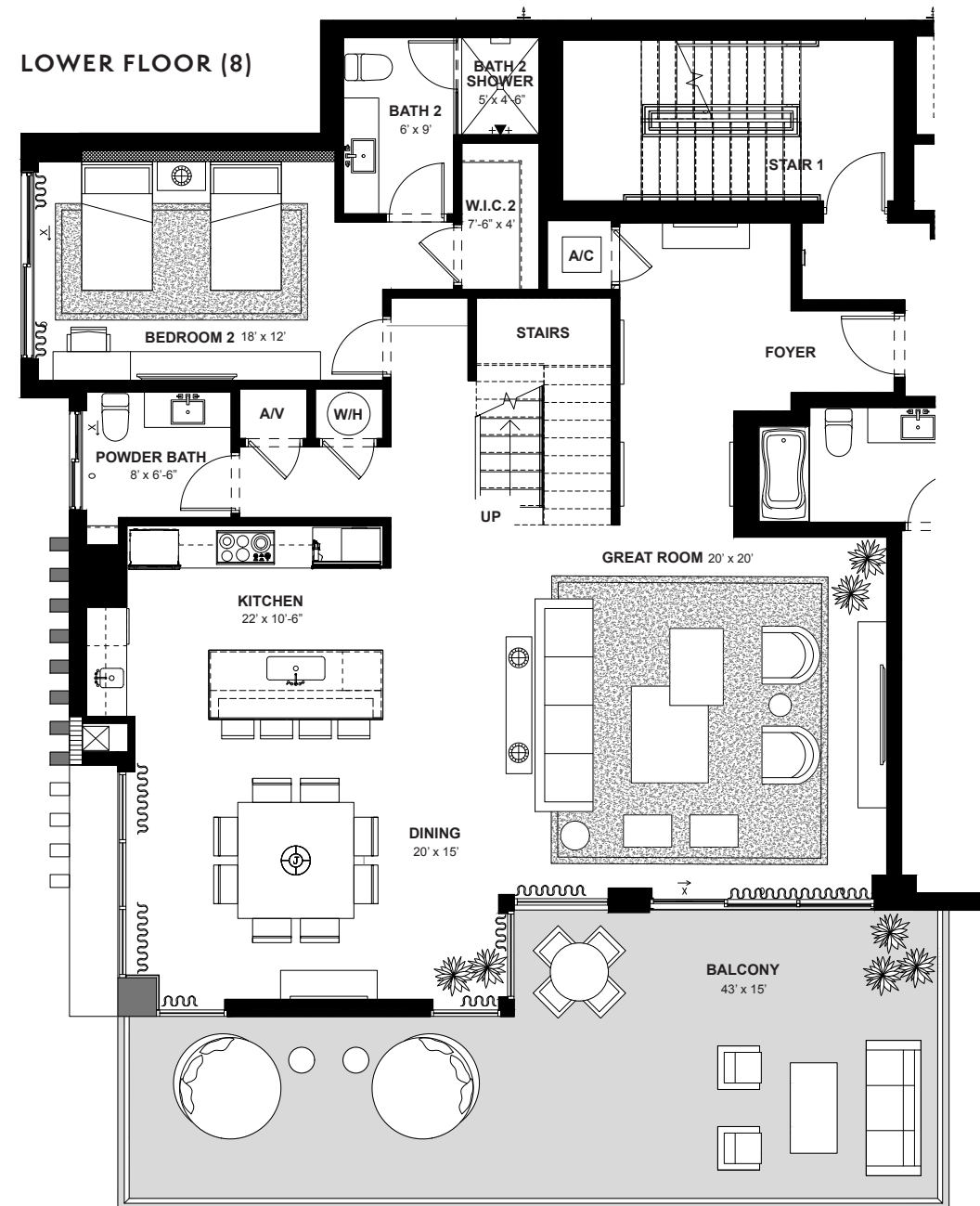


ORAL REPRESENTATIONS CANNOT BE RELIED UPON AS CORRECTLY STATING REPRESENTATIONS OF THE SELLER. FOR CORRECT REPRESENTATIONS, MAKE REFERENCE TO THIS BROCHURE AND TO THE DOCUMENTS REQUIRED BY SECTION 718.503, FLORIDA STATUTES TO BE FURNISHED BY A SELLER TO A BUYER OR LESSEE.

All dimensions, features, and specifications are approximate and subject to change without notice. Square footage listed above represents marketing square footage (please refer to section 3.2 of the Declaration and Exhibit 5 for more information). Brokers warmly welcomed.

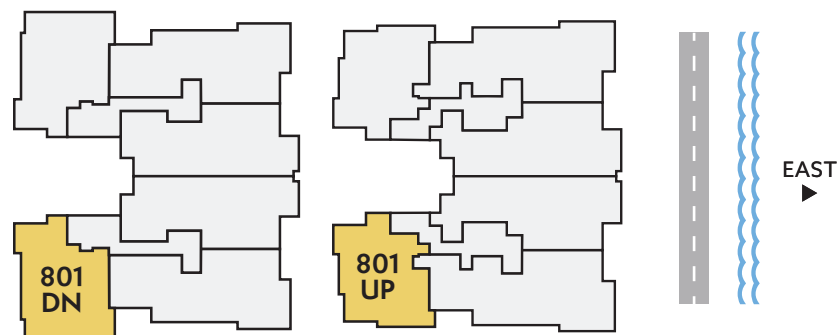
SALATO
POMPANO BEACH

Residence 801



EIGHTH FLOOR

NINTH FLOOR



**SOUTH/
WEST**
DIRECTION

3
BEDROOMS

3.5
BATHS

3,354
A/C LIVING
AREA

746
COVERED
TERRACES

4,100
TOTAL S.F.

Artist's conceptual illustration only. Subject to modification.



ORAL REPRESENTATIONS CANNOT BE RELIED UPON AS CORRECTLY STATING REPRESENTATIONS OF THE SELLER. FOR CORRECT REPRESENTATIONS, MAKE REFERENCE TO THIS BROCHURE AND TO THE DOCUMENTS REQUIRED BY SECTION 718.503, FLORIDA STATUTES TO BE FURNISHED BY A SELLER TO A BUYER OR LESSEE.

All dimensions, features, and specifications are approximate and subject to change without notice. Square footage listed above represents marketing square footage (please refer to section 3.2 of the Declaration and Exhibit 5 for more information). Brokers warmly welcomed.

SALATO
POMPANO BEACH