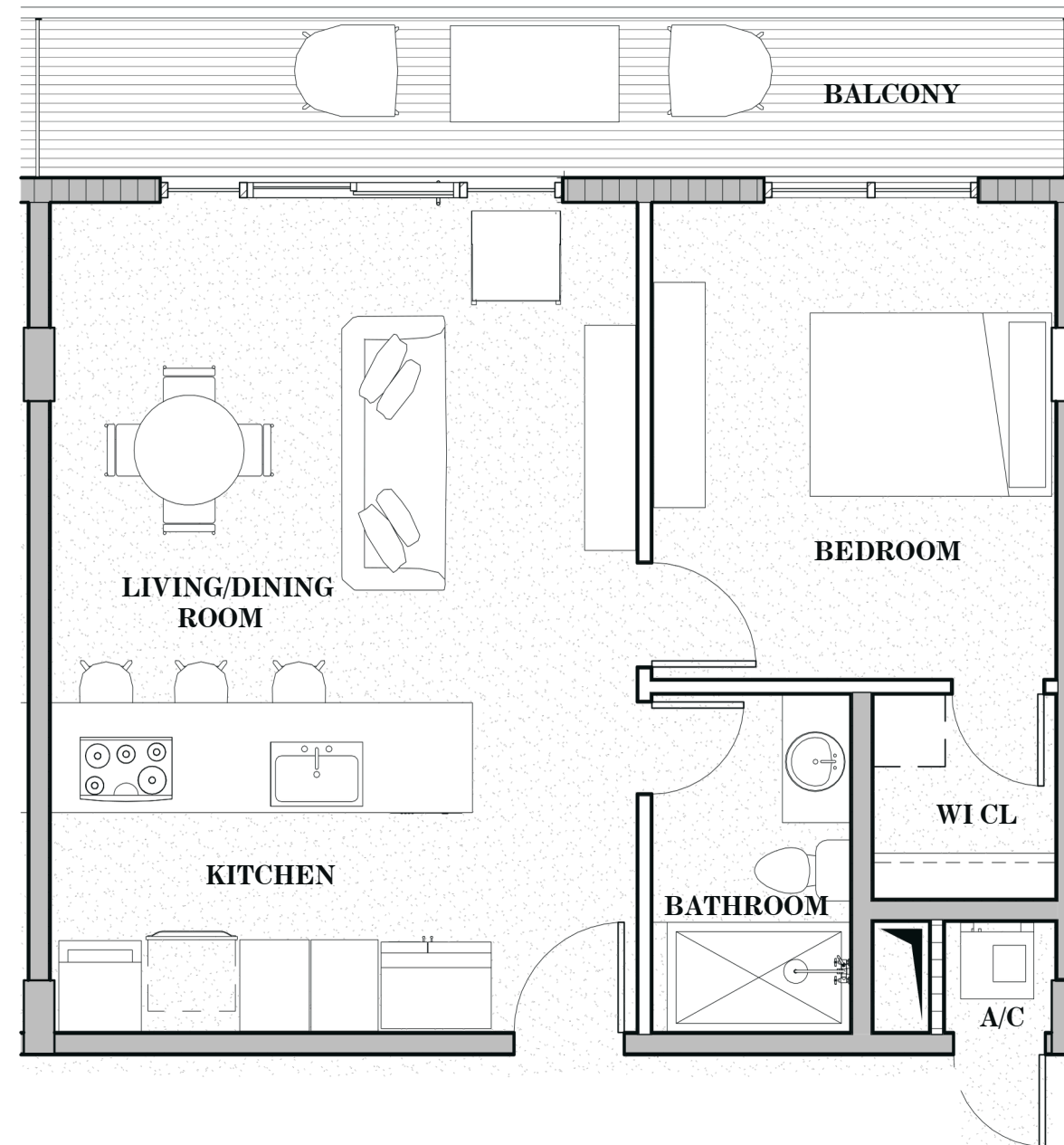


SEVEN PARK



RESIDENCES 01 - 04 AND 07-09 1 - BEDROOM 1 - BATH

TOTAL	789.15 SF / 73.32 M2
INTERIOR	660 SF / 61.32 M2
BALCONY	129.15 SF / 12 M2



 ORAL REPRESENTATIONS CANNOT BE RELIED UPON AS CORRECTLY STATING REPRESENTATIONS OF THE DEVELOPER. FOR CORRECT REPRESENTATIONS, MAKE REFERENCE TO THIS BROCHURE AND TO THE DOCUMENTS REQUIRED BY SECTION 718.503, FLORIDA STATUTES, TO BE FURNISHED BY A DEVELOPER TO A BUYER OR LESSEE.

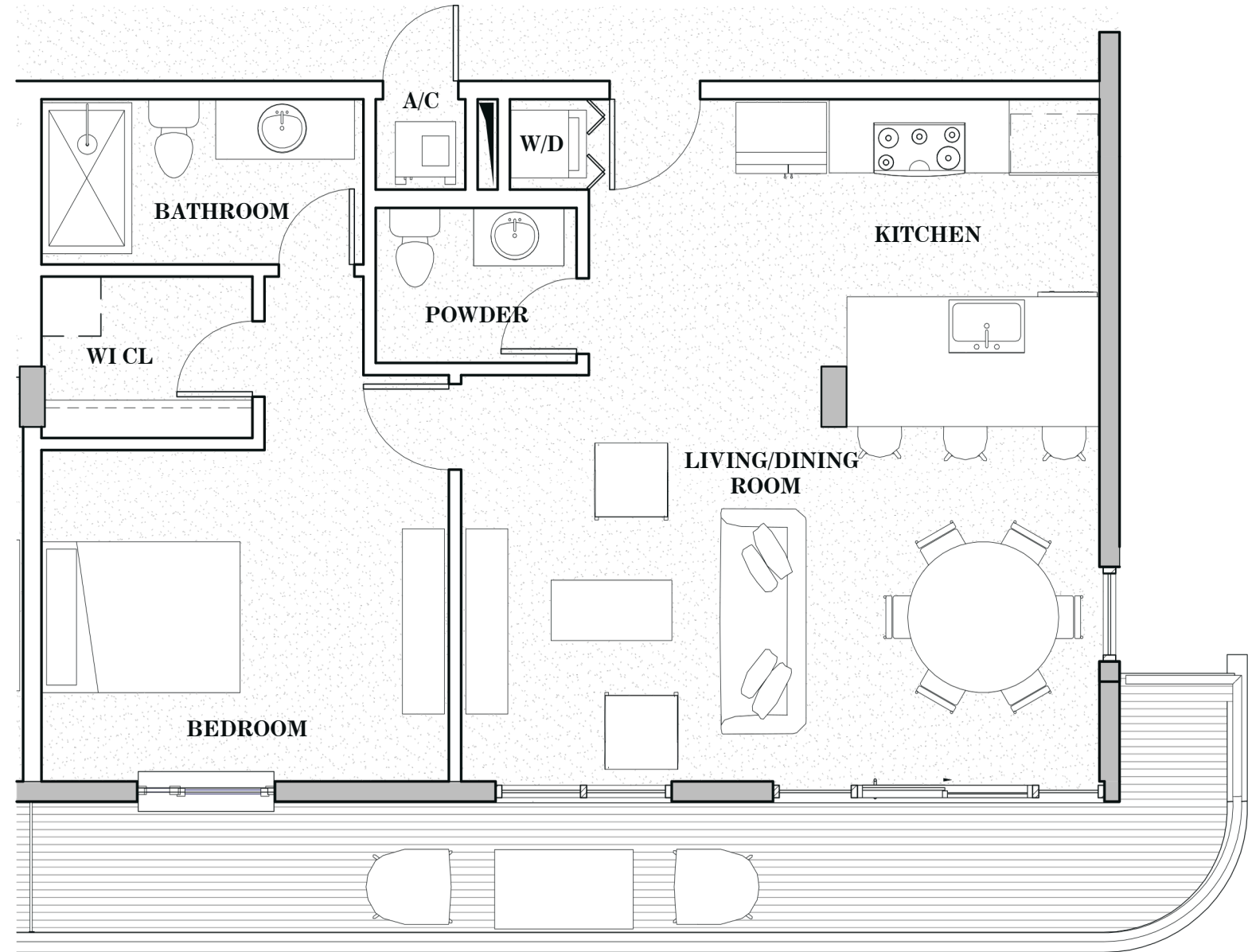
The dimensions stated for any depicted unit floor plan are approximate because there are various recognized methods for calculating the square footage of a unit. The square footage stated herein is calculated from the exterior boundaries of the exterior walls to the centerline of interior demising walls without deductions for cutouts, curves, or architectural features. This method typically results in quoted dimensions greater than the dimensions that would be determined by using other accepted methods. The definition of "Unit" and the calculation method to be relied upon is set forth in the Developer's prospectus and the method set forth in the Developer's prospectus may result in a square footage calculation less than the method used here. Consult the Developer's prospectus to understand the calculation of the Unit square footage and dimensions. Dimensions and Unit configuration may change during construction. Depictions of furnishings, fixtures and other items of personal property are not included with purchase. The illustrations and images are conceptual. The floor plan, unit layout, locations of windows, doors, closets, plumbing fixtures, mechanical equipment, appliances, structural elements, architectural design elements, and the uses, configurations, and entries to rooms may change based on final approved plans, permitting, and completed construction. The furniture layout and the uses of space illustrated are suggested uses only and not intended to guaranty any specific use of space or accommodation of specific furnishings.

SEVEN PARK



RESIDENCE 06 1 - BEDROOM 1.5 - BATH

TOTAL	1023.1 SF / 95.05 M2
INTERIOR	844 SF / 78.41 M2
BALCONY	179.1 SF / 16.64 M2



 ORAL REPRESENTATIONS CANNOT BE RELIED UPON AS CORRECTLY STATING REPRESENTATIONS OF THE DEVELOPER. FOR CORRECT REPRESENTATIONS, MAKE REFERENCE TO THIS BROCHURE AND TO THE DOCUMENTS REQUIRED BY SECTION 718.503, FLORIDA STATUTES, TO BE FURNISHED BY A DEVELOPER TO A BUYER OR LESSEE.

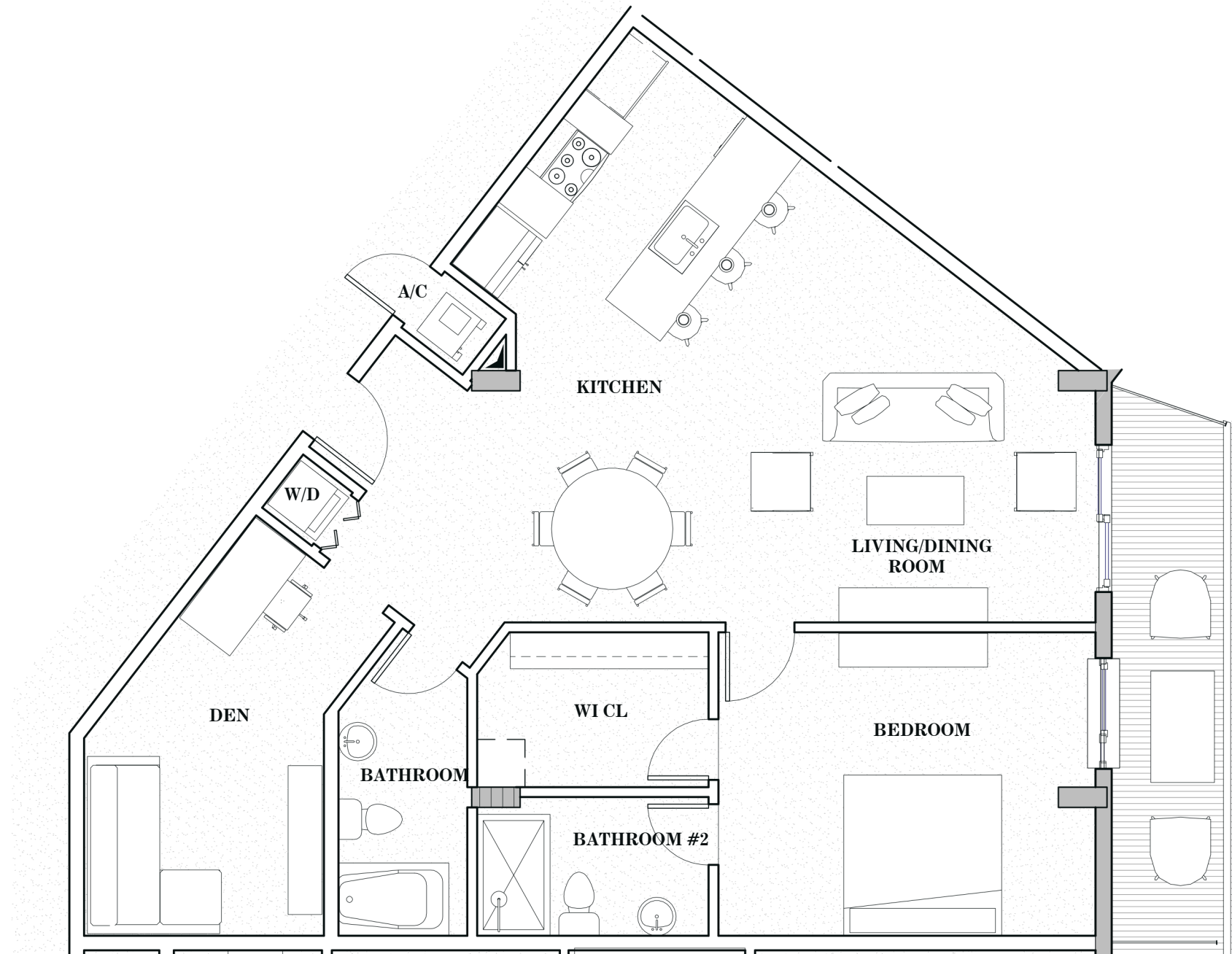
The dimensions stated for any depicted unit floor plan are approximate because there are various recognized methods for calculating the square footage of a unit. The square footage stated herein is calculated from the exterior boundaries of the exterior walls to the centerline of interior demising walls without deductions for cutouts, curves, or architectural features. This method typically results in quoted dimensions greater than the dimensions that would be determined by using other accepted methods. The definition of "Unit" and the calculation method to be relied upon is set forth in the Developer's prospectus and the method set forth in the Developer's prospectus may result in a square footage calculation less than the method used here. Consult the Developer's prospectus to understand the calculation of the Unit square footage and dimensions. Dimensions and Unit configuration may change during construction. Depictions of furnishings, fixtures and other items of personal property are not included with purchase. The illustrations and images are conceptual. The floor plan, unit layout, locations of windows, doors, closets, plumbing fixtures, mechanical equipment, appliances, structural elements, architectural design elements, and the uses, configurations, and entries to rooms may change based on final approved plans, permitting, and completed construction. The furniture layout and the uses of space illustrated are suggested uses only and not intended to guaranty any specific use of space or accommodation of specific furnishings.

SEVEN PARK



RESIDENCE 12 1- BEDROOM + DEN 2 - BATH

TOTAL	1243.1 SF / 115.49 M2
INTERIOR	1136 SF / 105.54 M2
BALCONY	107.1 SF / 9.95 M2



 ORAL REPRESENTATIONS CANNOT BE RELIED UPON AS CORRECTLY STATING REPRESENTATIONS OF THE DEVELOPER. FOR CORRECT REPRESENTATIONS, MAKE REFERENCE TO THIS BROCHURE AND TO THE DOCUMENTS REQUIRED BY SECTION 718.503, FLORIDA STATUTES, TO BE FURNISHED BY A DEVELOPER TO A BUYER OR LESSEE.

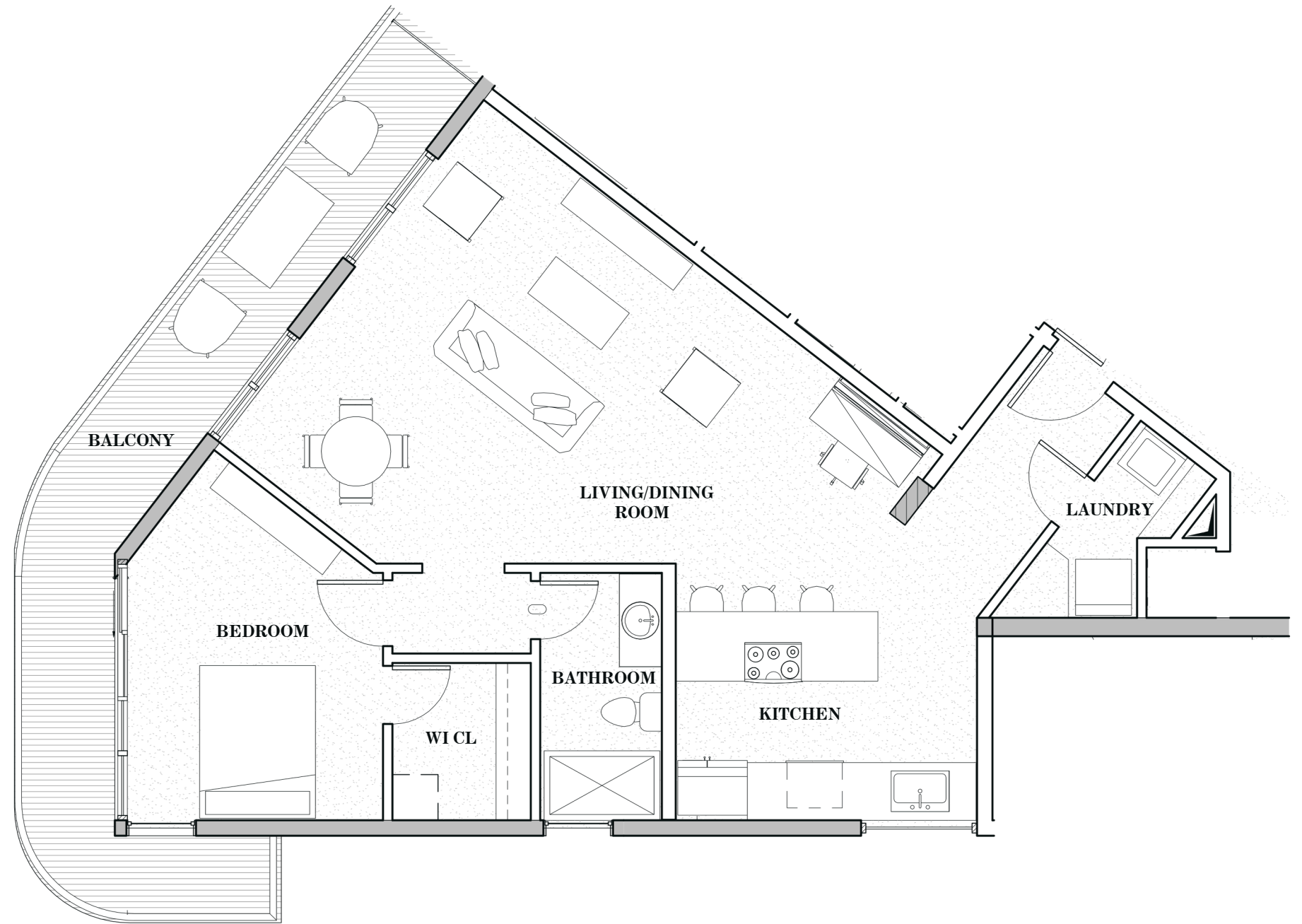
The dimensions stated for any depicted unit floor plan are approximate because there are various recognized methods for calculating the square footage of a unit. The square footage stated herein is calculated from the exterior boundaries of the exterior walls to the centerline of interior demising walls without deductions for cutouts, curves, or architectural features. This method typically results in quoted dimensions greater than the dimensions that would be determined by using other accepted methods. The definition of "Unit" and the calculation method to be relied upon is set forth in the Developer's prospectus and the method set forth in the Developer's prospectus may result in a square footage calculation less than the method used here. Consult the Developer's prospectus to understand the calculation of the Unit square footage and dimensions. Dimensions and Unit configuration may change during construction. Depictions of furnishings, fixtures and other items of personal property are not included with purchase. The illustrations and images are conceptual. The floor plan, unit layout, locations of windows, doors, closets, plumbing fixtures, mechanical equipment, appliances, structural elements, architectural design elements, and the uses, configurations, and entries to rooms may change based on final approved plans, permitting, and completed construction. The furniture layout and the uses of space illustrated are suggested uses only and not intended to guaranty any specific use of space or accommodation of specific furnishings.

SEVEN PARK



RESIDENCE 14 1 - BEDROOM 1 - BATH

TOTAL	1126.6 SF / 110.52 M ²
INTERIOR	970 SF / 90.12 M ²
BALCONY	219.6 SF / 20.4 M ²



 ORAL REPRESENTATIONS CANNOT BE RELIED UPON AS CORRECTLY STATING REPRESENTATIONS OF THE DEVELOPER. FOR CORRECT REPRESENTATIONS, MAKE REFERENCE TO THIS BROCHURE AND TO THE DOCUMENTS REQUIRED BY SECTION 718.503, FLORIDA STATUTES, TO BE FURNISHED BY A DEVELOPER TO A BUYER OR LESSEE.

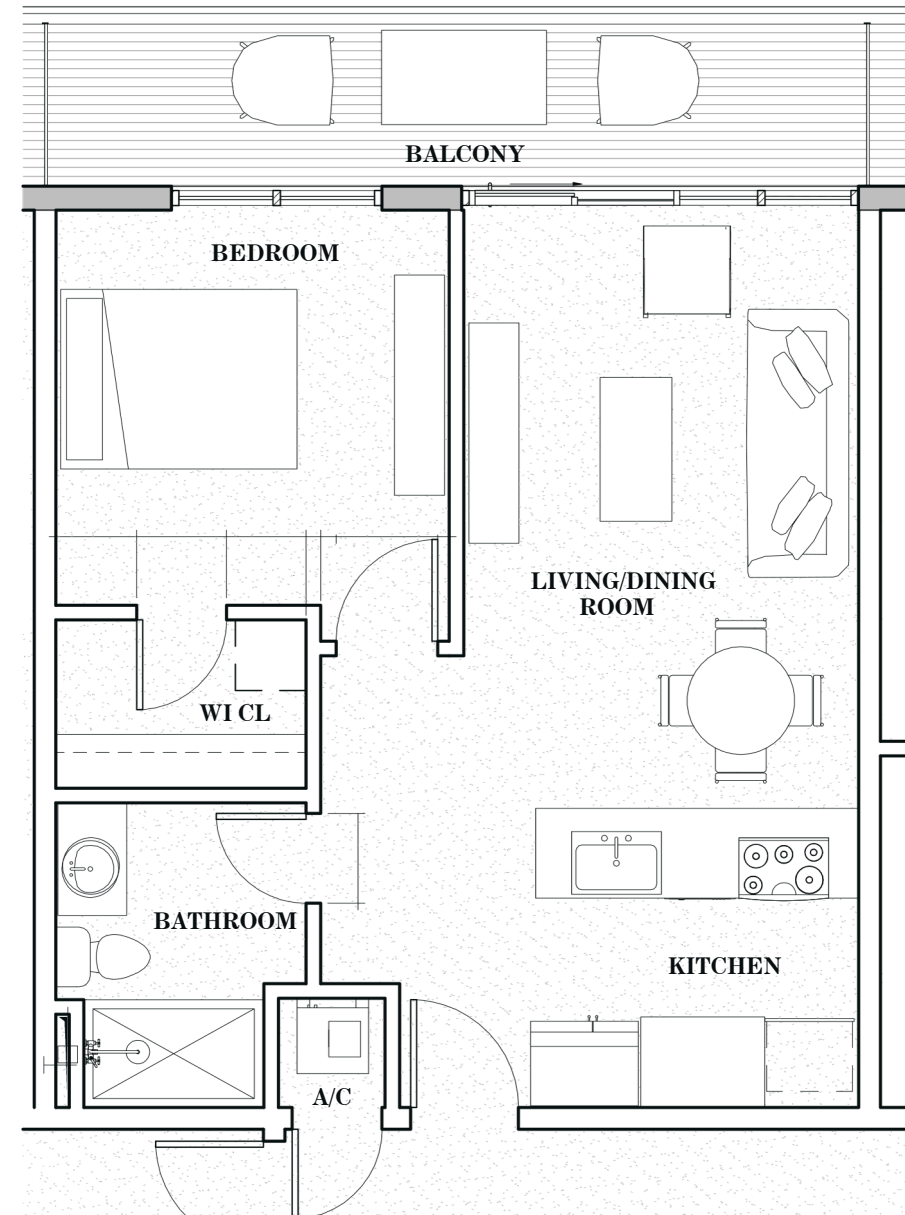
The dimensions stated for any depicted unit floor plan are approximate because there are various recognized methods for calculating the square footage of a unit. The square footage stated herein is calculated from the exterior boundaries of the exterior walls to the centerline of interior demising walls without deductions for cutouts, curves, or architectural features. This method typically results in quoted dimensions greater than the dimensions that would be determined by using other accepted methods. The definition of "Unit" and the calculation method to be relied upon is set forth in the Developer's prospectus and the method set forth in the Developer's prospectus may result in a square footage calculation less than the method used here. Consult the Developer's prospectus to understand the calculation of the Unit square footage and dimensions. Dimensions and Unit configuration may change during construction. Depictions of furnishings, fixtures and other items of personal property are not included with purchase. The illustrations and images are conceptual. The floor plan, unit layout, locations of windows, doors, closets, plumbing fixtures, mechanical equipment, appliances, structural elements, architectural design elements, and the uses, configurations, and entries to rooms may change based on final approved plans, permitting, and completed construction. The furniture layout and the uses of space illustrated are suggested uses only and not intended to guaranty any specific use of space or accommodation of specific furnishings.

SEVEN PARK



RESIDENCE 15 1 - BEDROOM 1 - BATH

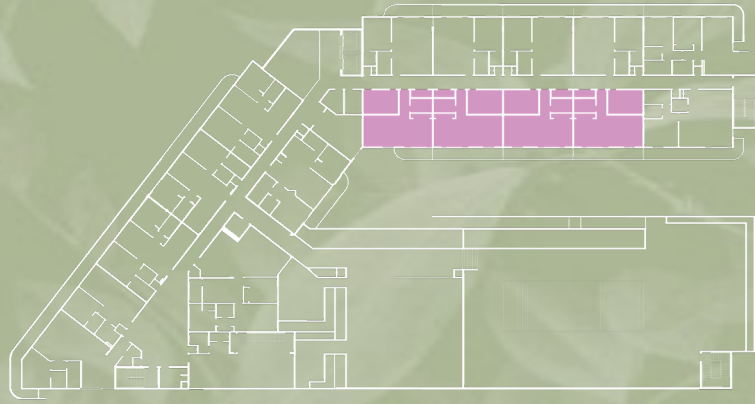
TOTAL	703.87 SF / 65.39 M2
INTERIOR	597 SF / 55.46 M2
BALCONY	106.87 SF / 9.93 M2



 ORAL REPRESENTATIONS CANNOT BE RELIED UPON AS CORRECTLY STATING REPRESENTATIONS OF THE DEVELOPER. FOR CORRECT REPRESENTATIONS, MAKE REFERENCE TO THIS BROCHURE AND TO THE DOCUMENTS REQUIRED BY SECTION 718.503, FLORIDA STATUTES, TO BE FURNISHED BY A DEVELOPER TO A BUYER OR LESSEE.

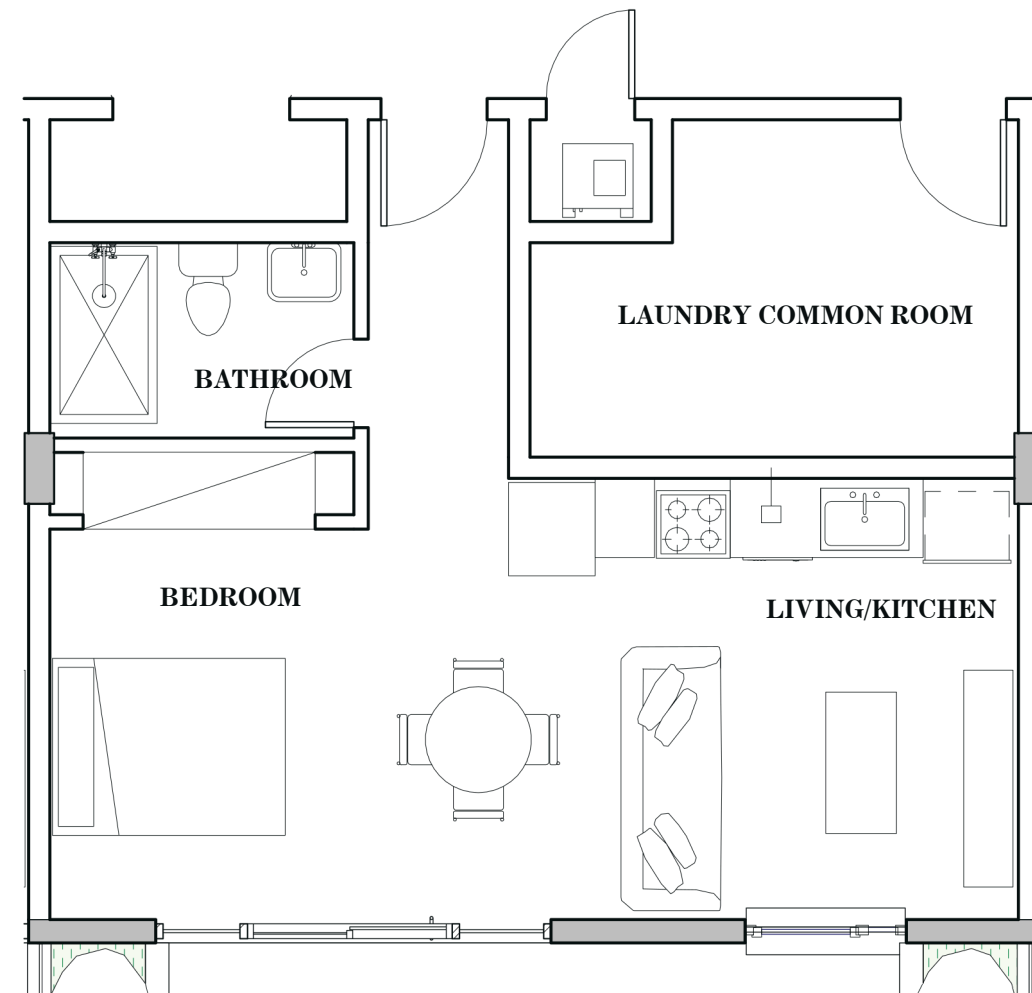
The dimensions stated for any depicted unit floor plan are approximate because there are various recognized methods for calculating the square footage of a unit. The square footage stated herein is calculated from the exterior boundaries of the exterior walls to the centerline of interior demising walls without deductions for cutouts, curves, or architectural features. This method typically results in quoted dimensions greater than the dimensions that would be determined by using other accepted methods. The definition of "Unit" and the calculation method to be relied upon is set forth in the Developer's prospectus and the method set forth in the Developer's prospectus may result in a square footage calculation less than the method used here. Consult the Developer's prospectus to understand the calculation of the Unit square footage and dimensions. Dimensions and Unit configuration may change during construction. Depictions of furnishings, fixtures and other items of personal property are not included with purchase. The illustrations and images are conceptual. The floor plan, unit layout, locations of windows, doors, closets, plumbing fixtures, mechanical equipment, appliances, structural elements, architectural design elements, and the uses, configurations, and entries to rooms may change based on final approved plans, permitting, and completed construction. The furniture layout and the uses of space illustrated are suggested uses only and not intended to guaranty any specific use of space or accommodation of specific furnishings.

SEVEN PARK



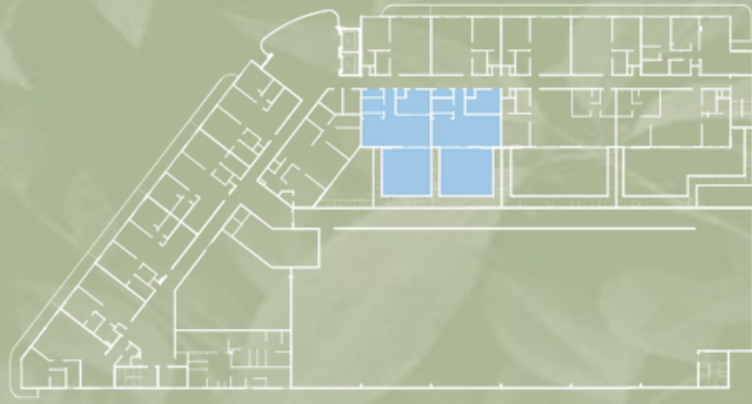
STUDIO RESIDENCE 307-310

TOTAL	607.07 SF / 56.4 M ²
INTERIOR	497 SF / 46.17 M ²
BALCONY	110.07 SF / 10.23 M ²



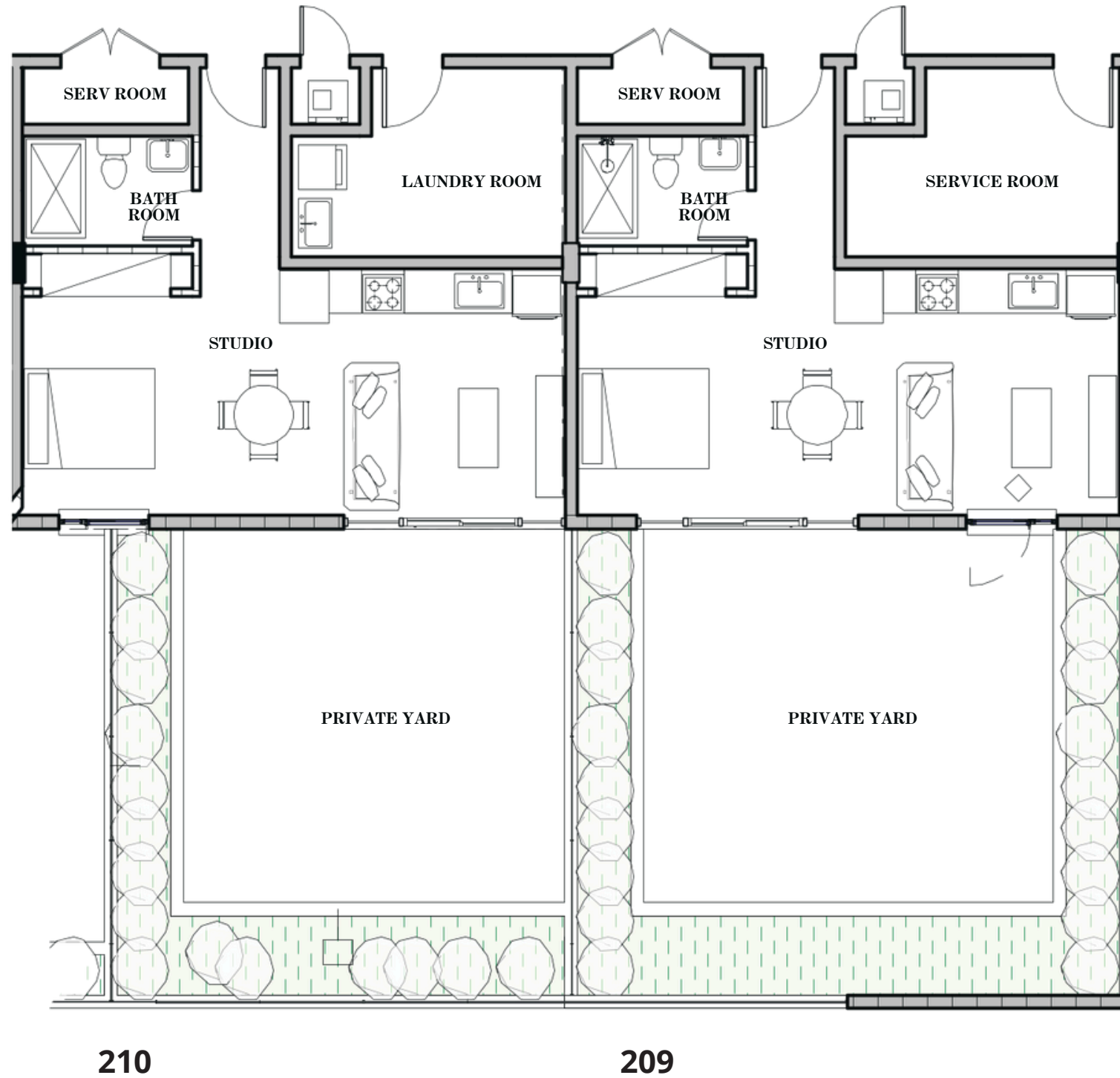
 ORAL REPRESENTATIONS CANNOT BE RELIED UPON AS CORRECTLY STATING REPRESENTATIONS OF THE DEVELOPER. FOR CORRECT REPRESENTATIONS, MAKE REFERENCE TO THIS BROCHURE AND TO THE DOCUMENTS REQUIRED BY SECTION 718.503, FLORIDA STATUTES, TO BE FURNISHED BY A DEVELOPER TO A BUYER OR LESSEE.

The dimensions stated for any depicted unit floor plan are approximate because there are various recognized methods for calculating the square footage of a unit. The square footage stated herein is calculated from the exterior boundaries of the exterior walls to the centerline of interior demising walls without deductions for cutouts, curves, or architectural features. This method typically results in quoted dimensions greater than the dimensions that would be determined by using other accepted methods. The definition of "Unit" and the calculation method to be relied upon is set forth in the Developer's prospectus and the method set forth in the Developer's prospectus may result in a square footage calculation less than the method used here. Consult the Developer's prospectus to understand the calculation of the Unit square footage and dimensions. Dimensions and Unit configuration may change during construction. Depictions of furnishings, fixtures and other items of personal property are not included with purchase. The illustrations and images are conceptual. The floor plan, unit layout, locations of windows, doors, closets, plumbing fixtures, mechanical equipment, appliances, structural elements, architectural design elements, and the uses, configurations, and entries to rooms may change based on final approved plans, permitting, and completed construction. The furniture layout and the uses of space illustrated are suggested uses only and not intended to guarantee any specific use of space or accommodation of specific furnishings.



**LANAI STUDIO
RESIDENCE 209-210**

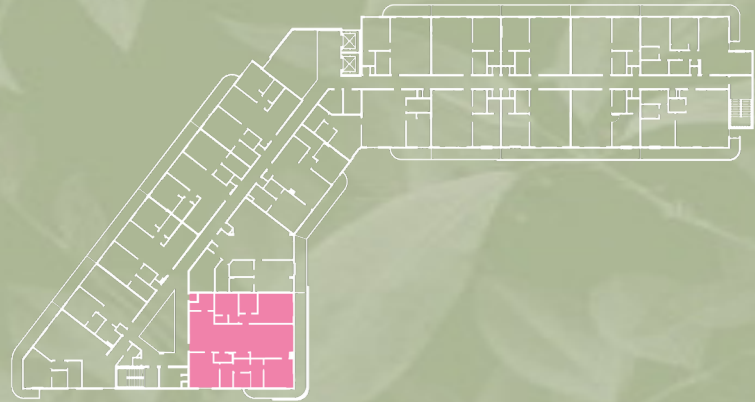
TOTAL	973 SF / 90.39 M2
INTERIOR	497 SF / 46.17 M2
BALCONY	476 SF / 44.22 M2



 ORAL REPRESENTATIONS CANNOT BE RELIED UPON AS CORRECTLY STATING REPRESENTATIONS OF THE DEVELOPER. FOR CORRECT REPRESENTATIONS, MAKE REFERENCE TO THIS BROCHURE AND TO THE DOCUMENTS REQUIRED BY SECTION 718.503, FLORIDA STATUTES, TO BE FURNISHED BY A DEVELOPER TO A BUYER OR LESSEE.

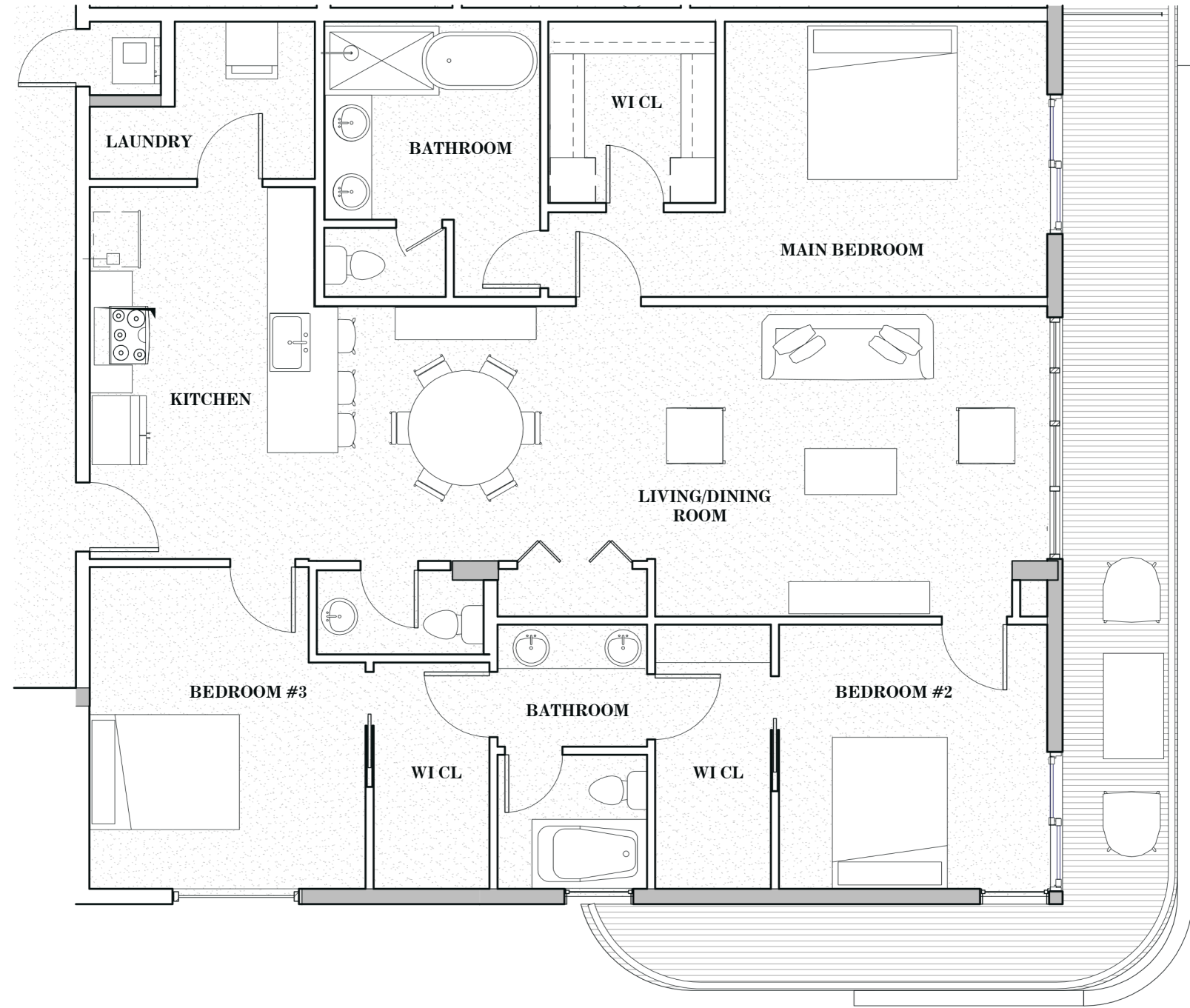
The dimensions stated for any depicted unit floor plan are approximate because there are various recognized methods for calculating the square footage of a unit. The square footage stated herein is calculated from the exterior boundaries of the exterior walls to the centerline of interior demising walls without deductions for cutouts, curves, or architectural features. This method typically results in quoted dimensions greater than the dimensions that would be determined by using other accepted methods. The definition of "Unit" and the calculation method to be relied upon is set forth in the Developer's prospectus and the method set forth in the Developer's prospectus may result in a square footage calculation less than the method used here. Consult the Developer's prospectus to understand the calculation of the Unit square footage and dimensions. Dimensions and Unit configuration may change during construction. Depictions of furnishings, fixtures and other items of personal property are not included with purchase. The illustrations and images are conceptual. The floor plan, unit layout, locations of windows, doors, closets, plumbing fixtures, mechanical equipment, appliances, structural elements, architectural design elements, and the uses, configurations, and entries to rooms may change based on final approved plans, permitting, and completed construction. The furniture layout and the uses of space illustrated are suggested uses only and not intended to guaranty any specific use of space or accommodation of specific furnishings.

SEVEN PARK



RESIDENCE 13 3 - BEDROOM 2.5 - BATH

TOTAL	1930.5 SF / 179.35 M2
INTERIOR	1647 SF / 153.01 M2
BALCONY	283.5 SF / 26.34 M2



A NEW RESIDENTIAL DEVELOPMENT IN THE HEART OF HALLANDALE BEACH SALES GALLERY: 21495 E Dixie Hwy. Aventura, FL 33180. Phone: 305-974-5381

 ORAL REPRESENTATIONS CANNOT BE RELIED UPON AS CORRECTLY STATING REPRESENTATIONS OF THE DEVELOPER. FOR CORRECT REPRESENTATIONS, MAKE REFERENCE TO THIS BROCHURE AND TO THE DOCUMENTS REQUIRED BY SECTION 718.503, FLORIDA STATUTES, TO BE FURNISHED BY A DEVELOPER TO A BUYER OR LESSEE.

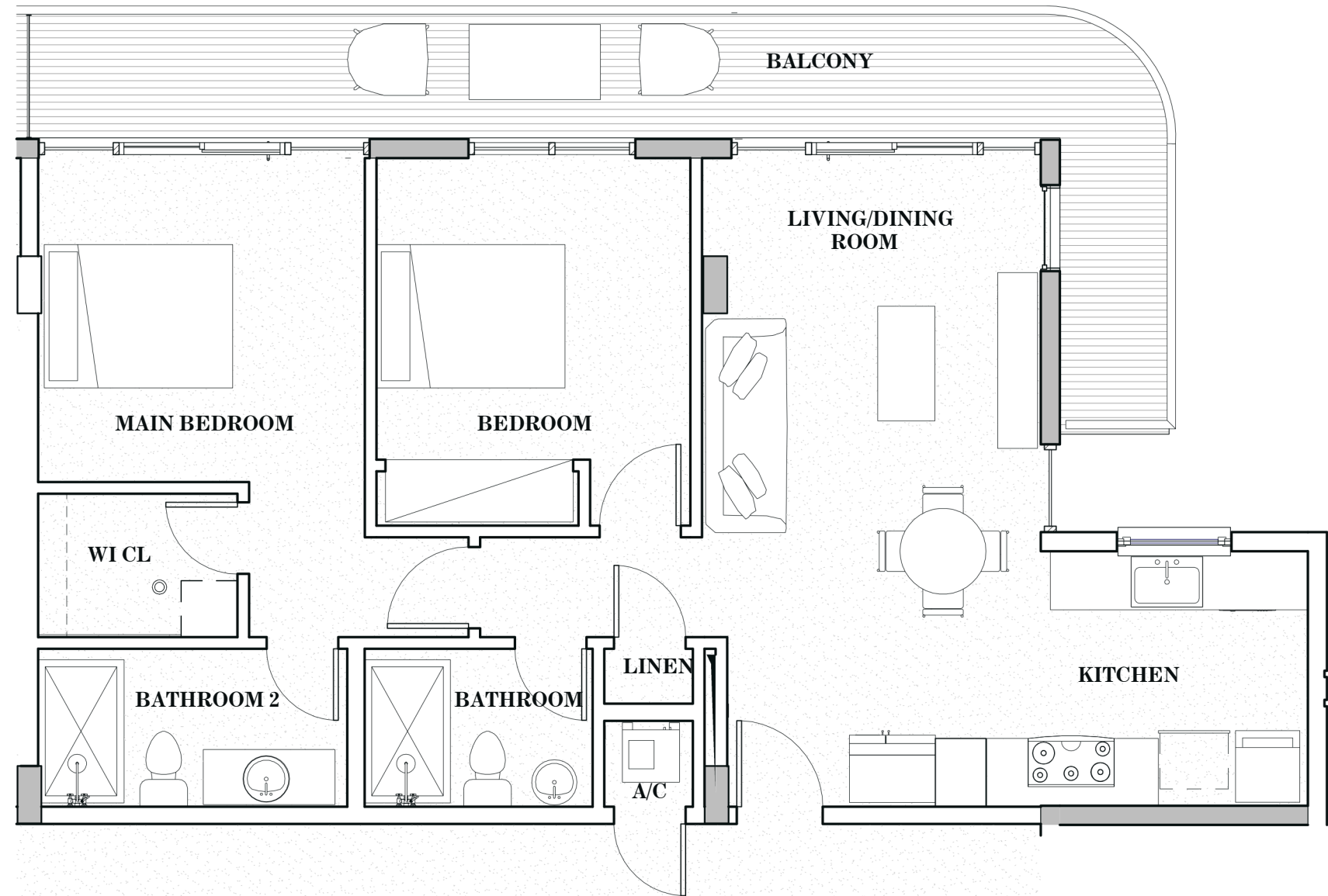
The dimensions stated for any depicted unit floor plan are approximate because there are various recognized methods for calculating the square footage of a unit. The square footage stated herein is calculated from the exterior boundaries of the exterior walls to the centerline of interior demising walls without deductions for cutouts, curves, or architectural features. This method typically results in quoted dimensions greater than the dimensions that would be determined by using other accepted methods. The definition of "Unit" and the calculation method to be relied upon is set forth in the Developer's prospectus and the method set forth in the Developer's prospectus may result in a square footage calculation less than the method used here. Consult the Developer's prospectus to understand the calculation of the Unit square footage and dimensions. Dimensions and Unit configuration may change during construction. Depictions of furnishings, fixtures and other items of personal property are not included with purchase. The illustrations and images are conceptual. The floor plan, unit layout, locations of windows, doors, closets, plumbing fixtures, mechanical equipment, appliances, structural elements, architectural design elements, and the uses, configurations, and entries to rooms may change based on final approved plans, permitting, and completed construction. The furniture layout and the uses of space illustrated are suggested uses only and not intended to guaranty any specific use of space or accommodation of specific furnishings.

SEVEN PARK



RESIDENCE 05 2 - BEDROOM 2 - BATH

TOTAL	1163.75 SF / 108.11 M2
INTERIOR	941 SF / 87.42 M2
BALCONY	222.75 SF / 20.69 M2



 ORAL REPRESENTATIONS CANNOT BE RELIED UPON AS CORRECTLY STATING REPRESENTATIONS OF THE DEVELOPER. FOR CORRECT REPRESENTATIONS, MAKE REFERENCE TO THIS BROCHURE AND TO THE DOCUMENTS REQUIRED BY SECTION 718.503, FLORIDA STATUTES, TO BE FURNISHED BY A DEVELOPER TO A BUYER OR LESSEE.

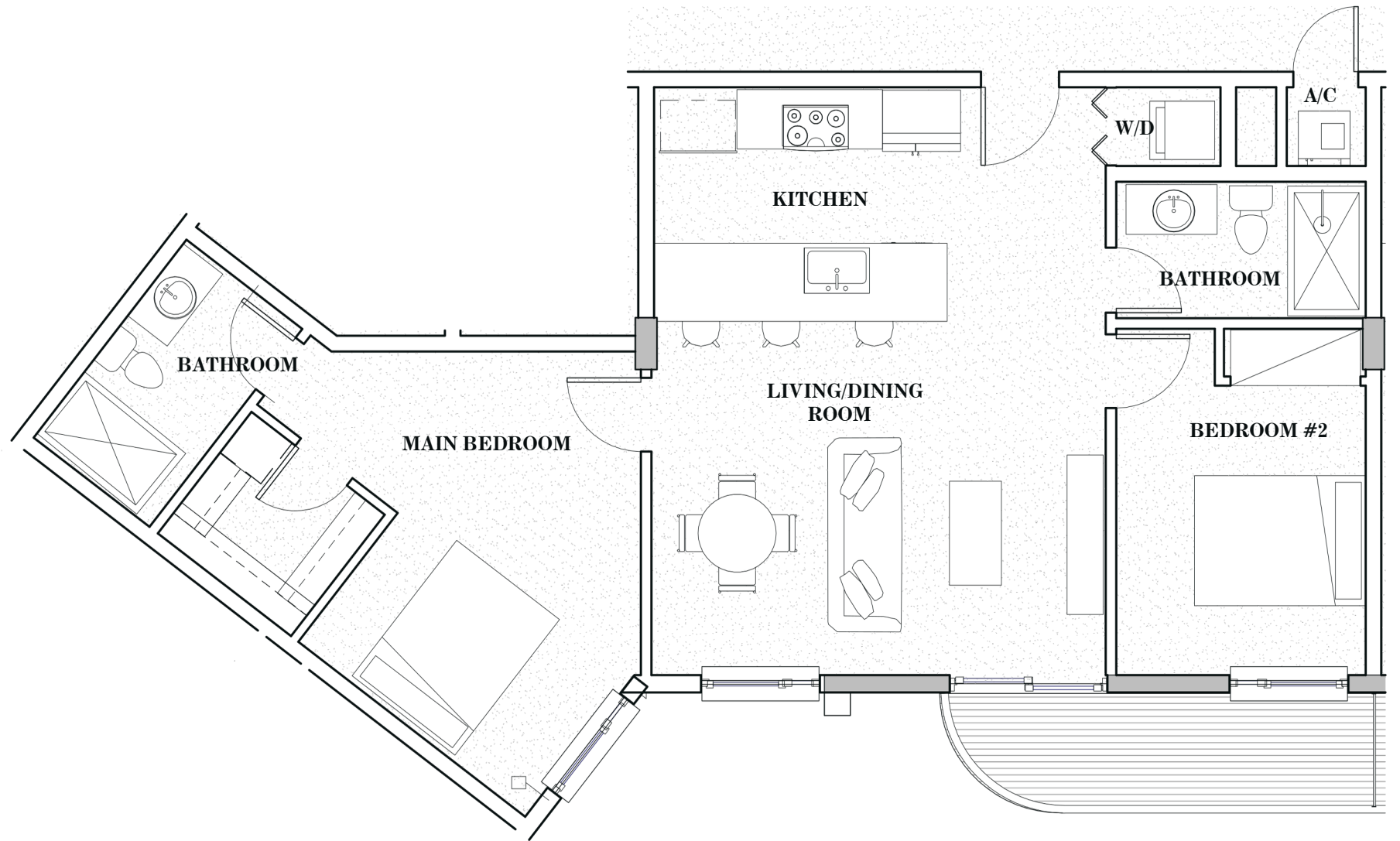
The dimensions stated for any depicted unit floor plan are approximate because there are various recognized methods for calculating the square footage of a unit. The square footage stated herein is calculated from the exterior boundaries of the exterior walls to the centerline of interior demising walls without deductions for cutouts, curves, or architectural features. This method typically results in quoted dimensions greater than the dimensions that would be determined by using other accepted methods. The definition of "Unit" and the calculation method to be relied upon is set forth in the Developer's prospectus and the method set forth in the Developer's prospectus may result in a square footage calculation less than the method used here. Consult the Developer's prospectus to understand the calculation of the Unit square footage and dimensions. Dimensions and Unit configuration may change during construction. Depictions of furnishings, fixtures and other items of personal property are not included with purchase. The illustrations and images are conceptual. The floor plan, unit layout, locations of windows, doors, closets, plumbing fixtures, mechanical equipment, appliances, structural elements, architectural design elements, and the uses, configurations, and entries to rooms may change based on final approved plans, permitting, and completed construction. The furniture layout and the uses of space illustrated are suggested uses only and not intended to guaranty any specific use of space or accommodation of specific furnishings.

SEVEN PARK



RESIDENCE 10 2 - BEDROOM 2 - BATH

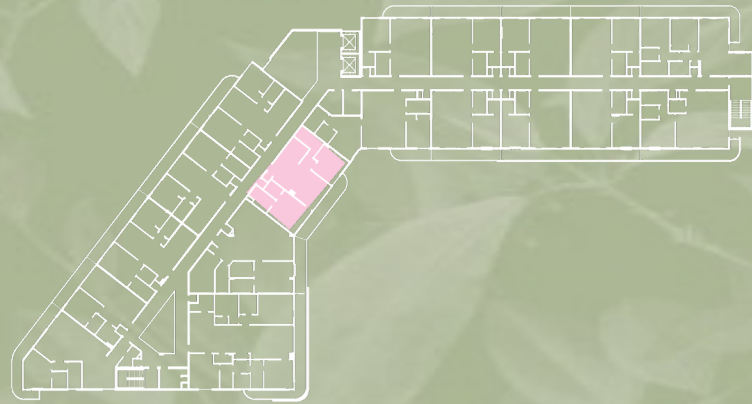
TOTAL	1039.9 SF / 96.61 M2
INTERIOR	967 SF / 89.84 M2
BALCONY	72.9 SF / 6.77 M2



 ORAL REPRESENTATIONS CANNOT BE RELIED UPON AS CORRECTLY STATING REPRESENTATIONS OF THE DEVELOPER. FOR CORRECT REPRESENTATIONS, MAKE REFERENCE TO THIS BROCHURE AND TO THE DOCUMENTS REQUIRED BY SECTION 718.503, FLORIDA STATUTES, TO BE FURNISHED BY A DEVELOPER TO A BUYER OR LESSEE.

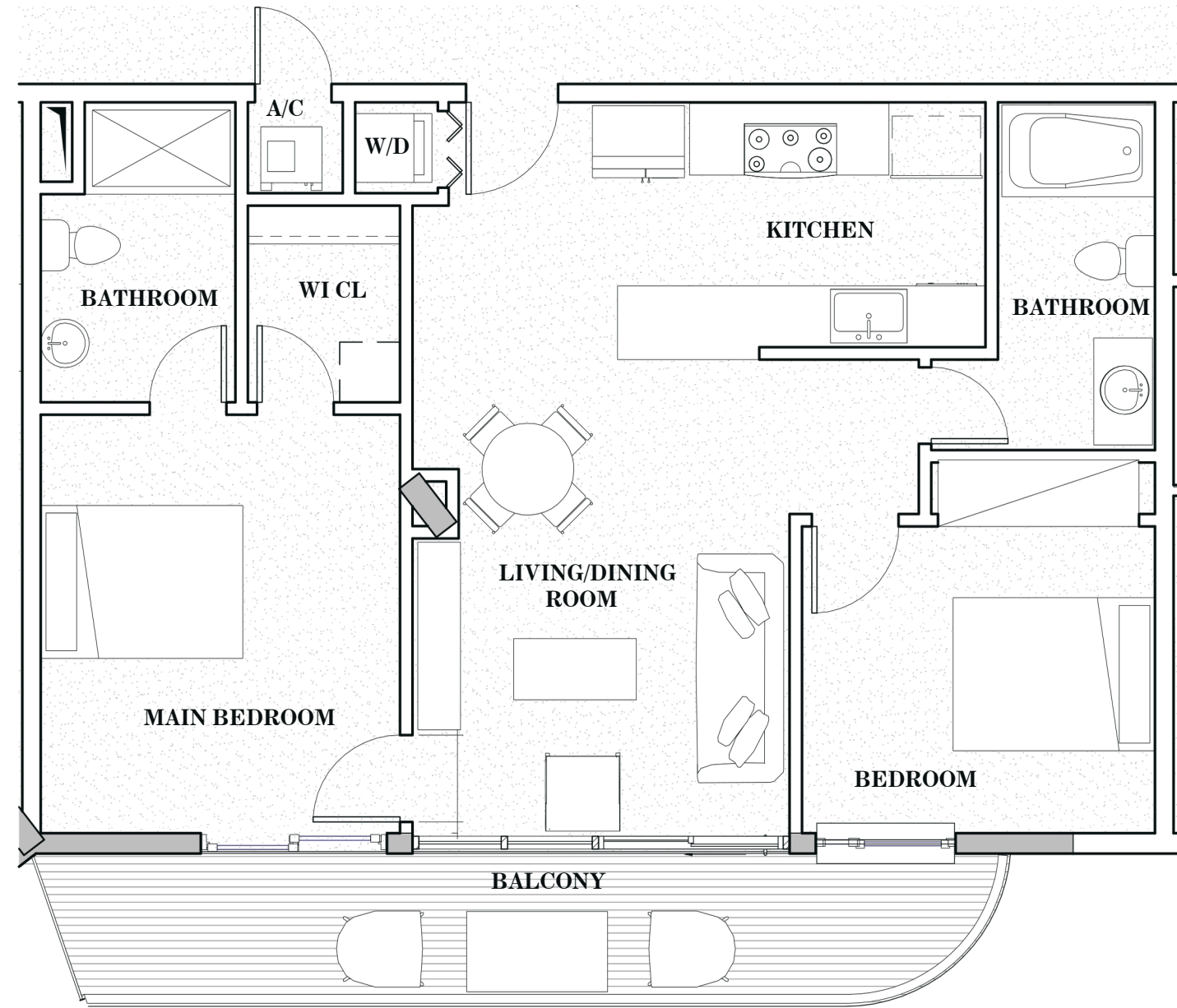
The dimensions stated for any depicted unit floor plan are approximate because there are various recognized methods for calculating the square footage of a unit. The square footage stated herein is calculated from the exterior boundaries of the exterior walls to the centerline of interior demising walls without deductions for cutouts, curves, or architectural features. This method typically results in quoted dimensions greater than the dimensions that would be determined by using other accepted methods. The definition of "Unit" and the calculation method to be relied upon is set forth in the Developer's prospectus and the method set forth in the Developer's prospectus may result in a square footage calculation less than the method used here. Consult the Developer's prospectus to understand the calculation of the Unit square footage and dimensions. Dimensions and Unit configuration may change during construction. Depictions of furnishings, fixtures and other items of personal property are not included with purchase. The illustrations and images are conceptual. The floor plan, unit layout, locations of windows, doors, closets, plumbing fixtures, mechanical equipment, appliances, structural elements, architectural design elements, and the uses, configurations, and entries to rooms may change based on final approved plans, permitting, and completed construction. The furniture layout and the uses of space illustrated are suggested uses only and not intended to guaranty any specific use of space or accommodation of specific furnishings.

SEVEN PARK




RESIDENCE 11 2 - BEDROOM 2 - BATH

TOTAL	1057.5 SF / 98.24 M2
INTERIOR	918 SF / 85.28 M2
BALCONY	139.5 SF / 12.96 M2

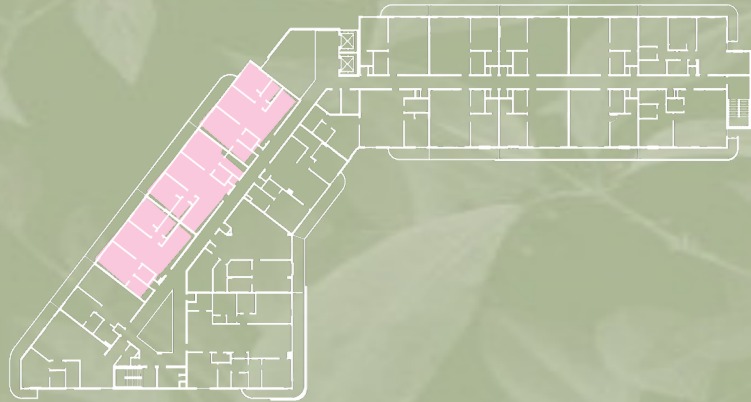


A NEW RESIDENTIAL DEVELOPMENT IN THE HEART OF HALLANDALE BEACH SALES GALLERY: 21495 E Dixie Hwy. Aventura, FL 33180. Phone: 305-974-5381

 ORAL REPRESENTATIONS CANNOT BE RELIED UPON AS CORRECTLY STATING REPRESENTATIONS OF THE DEVELOPER. FOR CORRECT REPRESENTATIONS, MAKE REFERENCE TO THIS BROCHURE AND TO THE DOCUMENTS REQUIRED BY SECTION 718.503, FLORIDA STATUTES, TO BE FURNISHED BY A DEVELOPER TO A BUYER OR LESSEE.

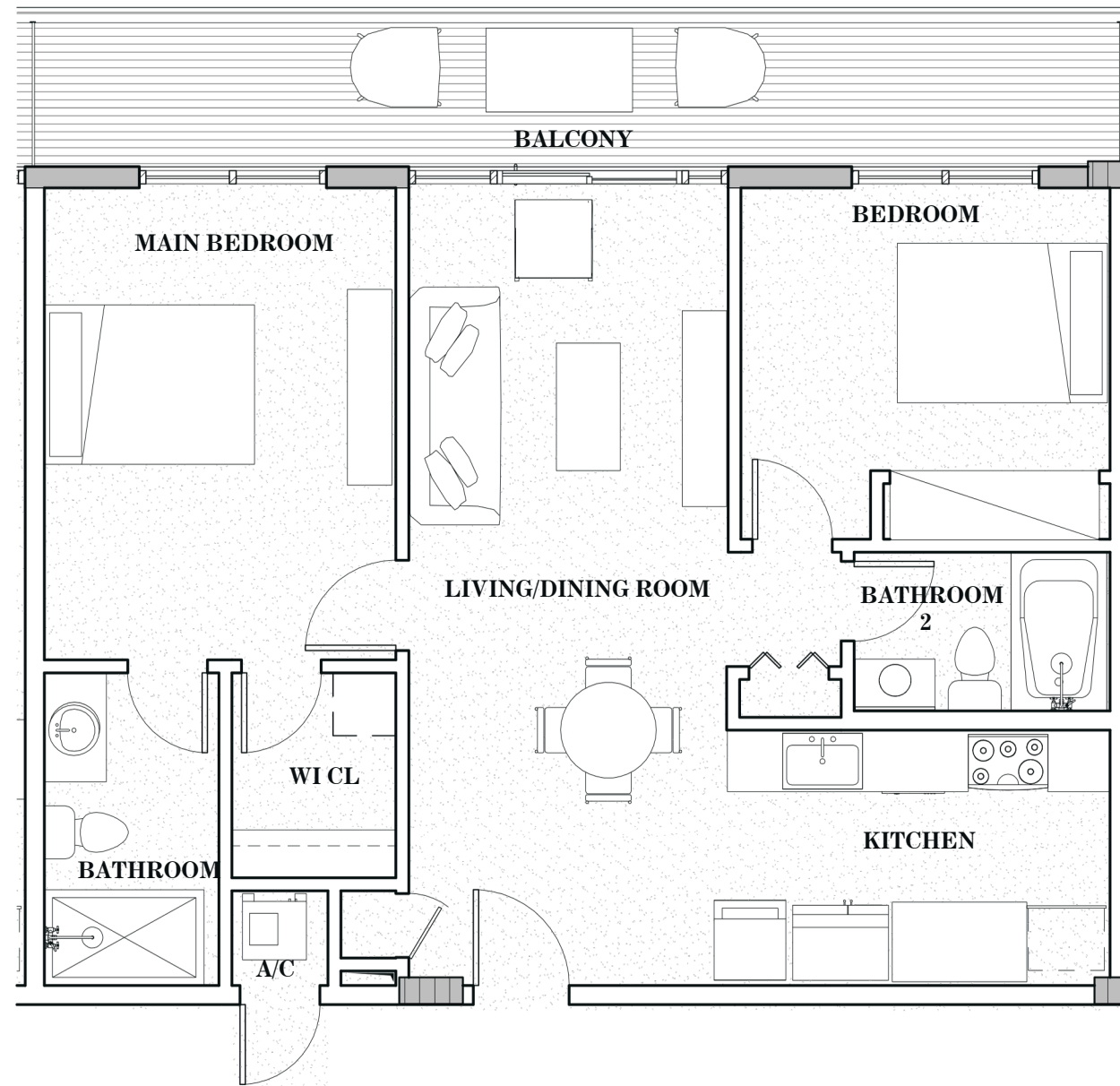
The dimensions stated for any depicted unit floor plan are approximate because there are various recognized methods for calculating the square footage of a unit. The square footage stated herein is calculated from the exterior boundaries of the exterior walls to the centerline of interior demising walls without deductions for cutouts, curves, or architectural features. This method typically results in quoted dimensions greater than the dimensions that would be determined by using other accepted methods. The definition of "Unit" and the calculation method to be relied upon is set forth in the Developer's prospectus and the method set forth in the Developer's prospectus may result in a square footage calculation less than the method used here. Consult the Developer's prospectus to understand the calculation of the Unit square footage and dimensions. Dimensions and Unit configuration may change during construction. Depictions of furnishings, fixtures and other items of personal property are not included with purchase. The illustrations and images are conceptual. The floor plan, unit layout, locations of windows, doors, closets, plumbing fixtures, mechanical equipment, appliances, structural elements, architectural design elements, and the uses, configurations, and entries to rooms may change based on final approved plans, permitting, and completed construction. The furniture layout and the uses of space illustrated are suggested uses only and not intended to guaranty any specific use of space or accommodation of specific furnishings.

SEVEN PARK



RESIDENCES 16 - 18 2 - BEDROOM 2 - BATH

TOTAL	1041.37 SF / 96.75 M2
INTERIOR	885 SF / 82.22 M2
BALCONY	156.37 SF / 14.53 M2



 ORAL REPRESENTATIONS CANNOT BE RELIED UPON AS CORRECTLY STATING REPRESENTATIONS OF THE DEVELOPER. FOR CORRECT REPRESENTATIONS, MAKE REFERENCE TO THIS BROCHURE AND TO THE DOCUMENTS REQUIRED BY SECTION 718.503, FLORIDA STATUTES, TO BE FURNISHED BY A DEVELOPER TO A BUYER OR LESSEE.

The dimensions stated for any depicted unit floor plan are approximate because there are various recognized methods for calculating the square footage of a unit. The square footage stated herein is calculated from the exterior boundaries of the exterior walls to the centerline of interior demising walls without deductions for cutouts, curves, or architectural features. This method typically results in quoted dimensions greater than the dimensions that would be determined by using other accepted methods. The definition of "Unit" and the calculation method to be relied upon is set forth in the Developer's prospectus and the method set forth in the Developer's prospectus may result in a square footage calculation less than the method used here. Consult the Developer's prospectus to understand the calculation of the Unit square footage and dimensions. Dimensions and Unit configuration may change during construction. Depictions of furnishings, fixtures and other items of personal property are not included with purchase. The illustrations and images are conceptual. The floor plan, unit layout, locations of windows, doors, closets, plumbing fixtures, mechanical equipment, appliances, structural elements, architectural design elements, and the uses, configurations, and entries to rooms may change based on final approved plans, permitting, and completed construction. The furniture layout and the uses of space illustrated are suggested uses only and not intended to guaranty any specific use of space or accommodation of specific furnishings.

SEVEN PARK

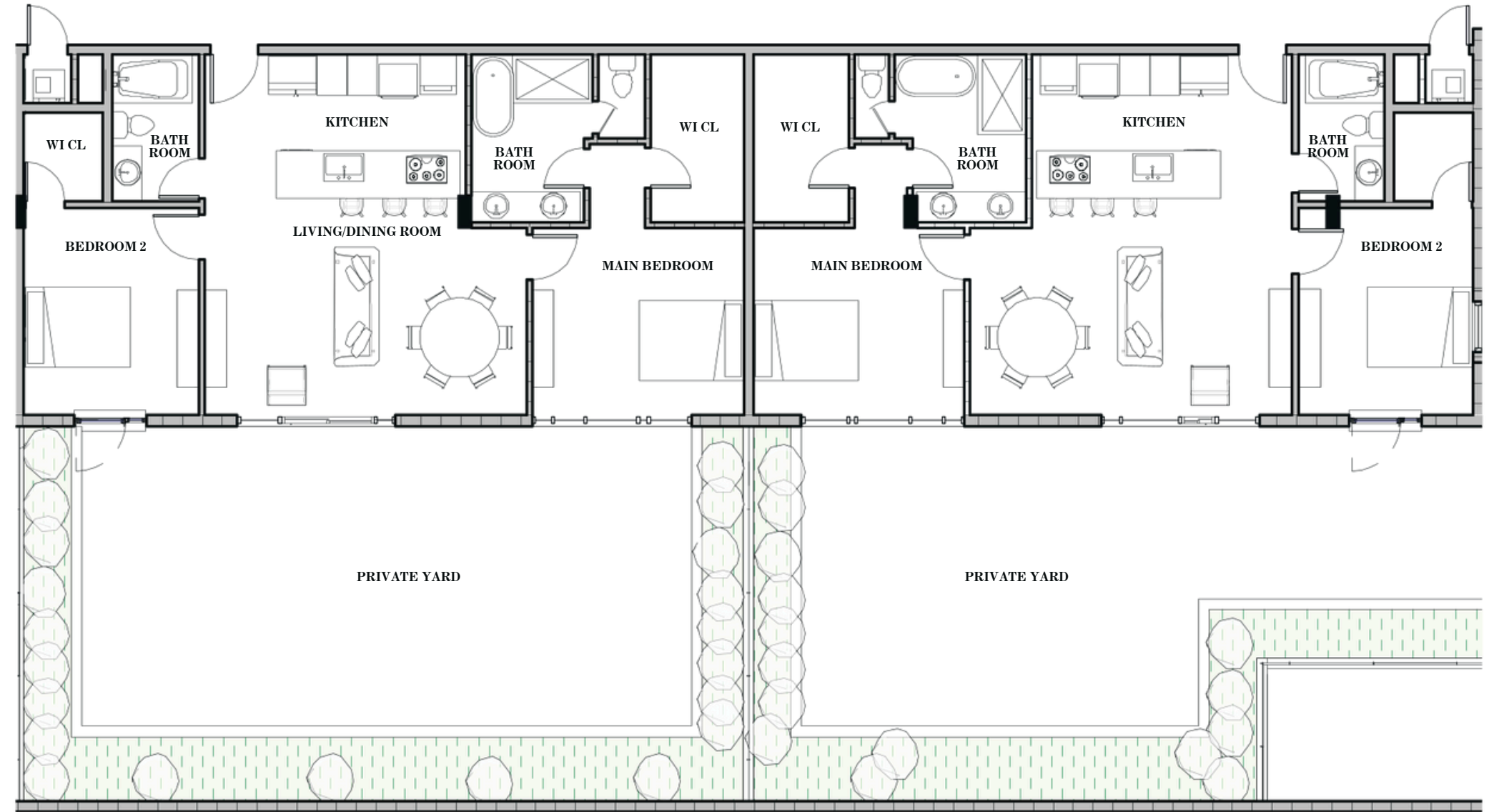


LANAI UNIT 206 2 - BEDROOM 2 - BATH

TOTAL	1898 SF / 176.33 M2
INTERIOR	1088 SF / 101.08 M2
BALCONY	810 SF / 75.25 M2

LANAI UNIT 208 2 - BEDROOM 2 - BATH

TOTAL	1892 SF / 176.02 M2
INTERIOR	1082 SF / 100.52 M2
BALCONY	810 SF / 75.25 M2



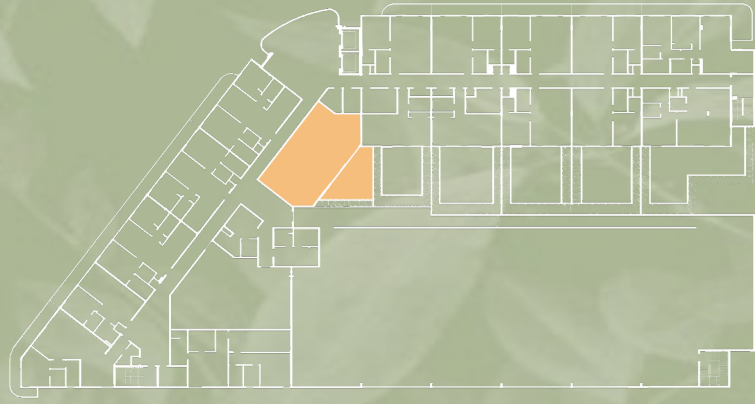
208

206

 ORAL REPRESENTATIONS CANNOT BE RELIED UPON AS CORRECTLY STATING REPRESENTATIONS OF THE DEVELOPER. FOR CORRECT REPRESENTATIONS, MAKE REFERENCE TO THIS BROCHURE AND TO THE DOCUMENTS REQUIRED BY SECTION 718.503, FLORIDA STATUTES, TO BE FURNISHED BY A DEVELOPER TO A BUYER OR LESSEE.

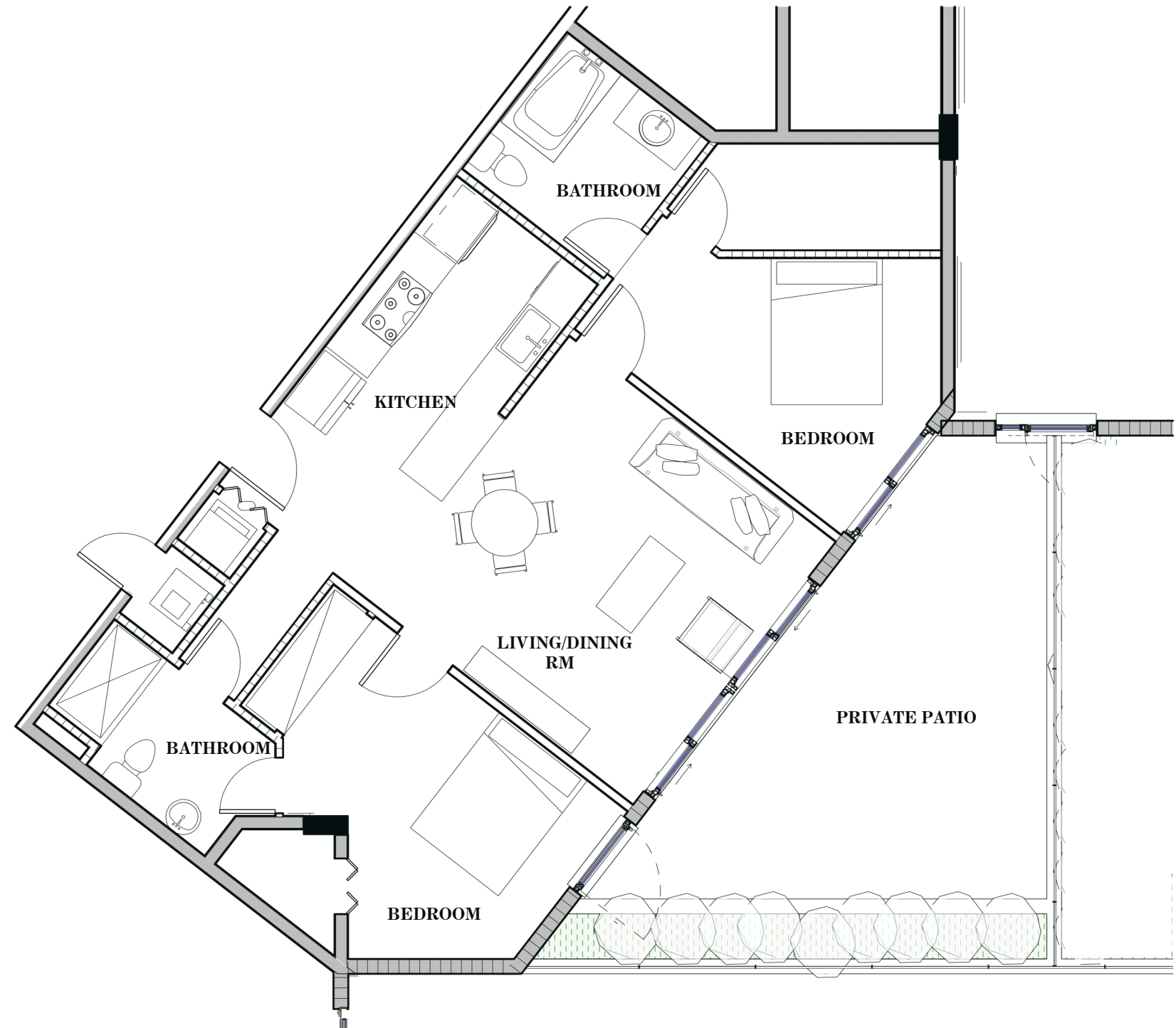
The dimensions stated for any depicted unit floor plan are approximate because there are various recognized methods for calculating the square footage of a unit. The square footage stated herein is calculated from the exterior boundaries of the exterior walls to the centerline of interior demising walls without deductions for cutouts, curves, or architectural features. This method typically results in quoted dimensions greater than the dimensions that would be determined by using other accepted methods. The definition of "Unit" and the calculation method to be relied upon is set forth in the Developer's prospectus and the method set forth in the Developer's prospectus may result in a square footage calculation less than the method used here. Consult the Developer's prospectus to understand the calculation of the Unit square footage and dimensions. Dimensions and Unit configuration may change during construction. Depictions of furnishings, fixtures and other items of personal property are not included with purchase. The illustrations and images are conceptual. The floor plan, unit layout, locations of windows, doors, closets, plumbing fixtures, mechanical equipment, appliances, structural elements, architectural design elements, and the uses, configurations, and entries to rooms may change based on final approved plans, permitting, and completed construction. The furniture layout and the uses of space illustrated are suggested uses only and not intended to guaranty any specific use of space or accommodation of specific furnishings.

SEVEN PARK



LANAI UNIT 211 2 - BEDROOM 2 - BATH

TOTAL	1320 SF / 122.63 M2
INTERIOR	996 SF / 92.53 M2
BALCONY	324 SF / 30.1 M2



 ORAL REPRESENTATIONS CANNOT BE RELIED UPON AS CORRECTLY STATING REPRESENTATIONS OF THE DEVELOPER. FOR CORRECT REPRESENTATIONS, MAKE REFERENCE TO THIS BROCHURE AND TO THE DOCUMENTS REQUIRED BY SECTION 718.503, FLORIDA STATUTES, TO BE FURNISHED BY A DEVELOPER TO A BUYER OR LESSEE.

The dimensions stated for any depicted unit floor plan are approximate because there are various recognized methods for calculating the square footage of a unit. The square footage stated herein is calculated from the exterior boundaries of the exterior walls to the centerline of interior demising walls without deductions for cutouts, curves, or architectural features. This method typically results in quoted dimensions greater than the dimensions that would be determined by using other accepted methods. The definition of "Unit" and the calculation method to be relied upon is set forth in the Developer's prospectus and the method set forth in the Developer's prospectus may result in a square footage calculation less than the method used here. Consult the Developer's prospectus to understand the calculation of the Unit square footage and dimensions. Dimensions and Unit configuration may change during construction. Depictions of furnishings, fixtures and other items of personal property are not included with purchase. The illustrations and images are conceptual. The floor plan, unit layout, locations of windows, doors, closets, plumbing fixtures, mechanical equipment, appliances, structural elements, architectural design elements, and the uses, configurations, and entries to rooms may change based on final approved plans, permitting, and completed construction. The furniture layout and the uses of space illustrated are suggested uses only and not intended to guaranty any specific use of space or accommodation of specific furnishings.