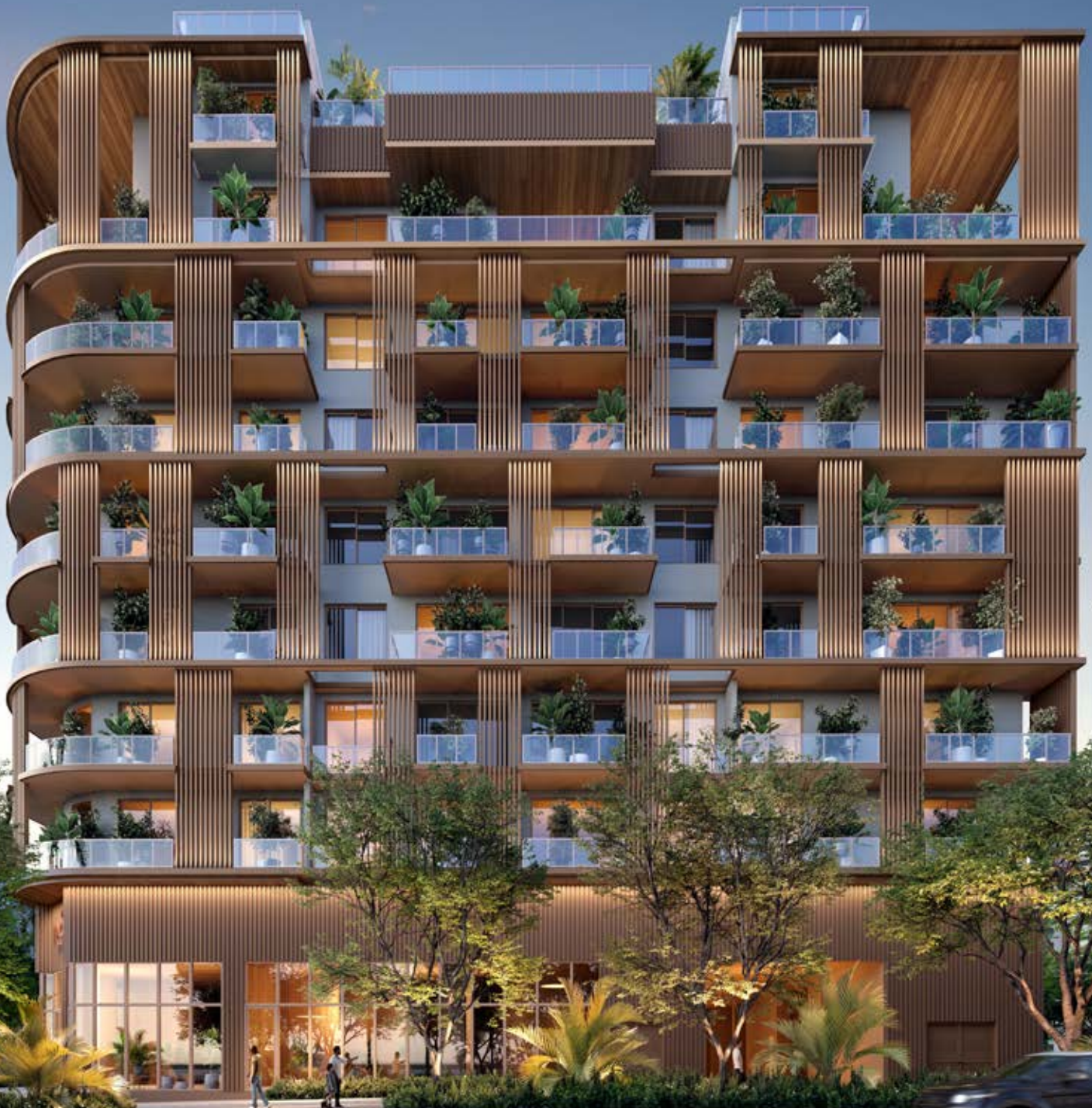


THE  
LINCOLN  
COCONUT GROVE

Exclusive Boutique Living in the  
Heart of Coconut Grove



All illustrations are artistic conceptual renderings and are subject to change without notice.

# Miami's Historic Gem

Coconut Grove is Miami's oldest and most historic neighborhood, known for its rich past and undeniable charm. Lush streets, artistic spirit, and a welcoming community define this iconic enclave. The Lincoln places residents at the heart of it all, offering access to artisanal shops, gourmet restaurants, and peaceful parks.

Perfectly connected to Miami's key areas like Coral Gables and Brickell, residents at The Lincoln enjoy the best of both worlds—tranquil living within Coconut Grove and effortless access to the vibrant pulse of the city.





All illustrations are artistic conceptual renderings and are subject to change without notice.

## A Vision of Modern Elegance

Welcome to The Lincoln, where boutique living meets the energy of Coconut Grove. With 48 luxury residences, it's perfect for those who value style, sophistication and exclusivity. Just a 3-minute walk to Coconut Grove's restaurants, parks, and marinas, and less than 5 minutes from top retailers and grocery stores.

You're only 10 minutes from Coral Gables, Brickell, and Downtown, and 15 minutes from Miami Beach and Miami International Airport. The Lincoln offers urban excitement and peaceful retreat, surrounded by some of Miami's best private and public schools.

# Elevated Living with Unmatched Amenities

From a serene rooftop oasis with breathtaking views to state-of-the-art fitness and wellness spaces, The Lincoln offers a lifestyle where relaxation, recreation, and community come together seamlessly.

- Resort-style rooftop oasis featuring a 40-foot heated lap pool and covered cabanas
- Observation deck and lounge area with sweeping bay and city views
- Outdoor yoga, meditation, and lounge area shaded by stylishly designed sails
- Rooftop entertainment area with summer kitchen, expansive group dining, and seating clusters, perfect for private events
- Zen spa-inspired wellness center featuring sauna, steam room, and hot and cold plunge tubs
- State of the Art Fitness Center
- Multi-purpose private owners' lounge with golf simulator, pool table, media entertainment and co-working space
- Valet parking service
- 24/7 front desk and night security services, with security, monitoring, and surveillance systems
- EV ready parking
- Pet grooming room and private dog park



All illustrations are artistic conceptual renderings and are subject to change without notice.



All illustrations are artistic conceptual renderings and are subject to change without notice.

## Thoughtfully Curated Residences

Designed for luxury and timeless elegance, the residences at The Lincoln feature one- to four-bedroom layouts, combining spacious designs with premium finishes. Each home is crafted to offer a harmonious blend of comfort and sophistication, creating the perfect environment for vibrant living, working, and entertaining in style.

- Up to 11-foot ceiling heights
- Spacious 1-, 2-, 3- and 4-bedroom units designed with an in-suite den/office area
- Snaidero Italian kitchens with extra-large islands
- Miele kitchen appliances, with an optional upgrade to Sub-Zero and Wolf
- Porcelain floors throughout, with three curated options available
- Resort-inspired primary bathrooms with marble countertops
- Large balconies with glass railings and porcelain floors
- Smart-home technology-ready units
- Expansive Walk-in Closets

# THE LINCOLN

## COCONUT GROVE

### Site Location

2650 Lincoln Avenue, Miami, FL 33133

Sales & Marketing by

ONE | Sotheby's  
INTERNATIONAL REALTY


Developed by

LORE  
Development Group

ELEMENT  
DEVELOPMENT

Partners

LESTE | OPPORTUNITY  
REAL ESTATE INVESTMENT

 These materials are not intended to be an offer to sell, or solicitation to buy a unit in the condominium. Such an offering shall only be made pursuant to the prospectus (offering circular) for the condominium and no statements should be relied upon unless made in the prospectus or in the applicable purchase agreement. In no event shall any solicitation, offer or sale of a unit in the condominium be made in, or to residents of, any state or country in which such activity would be unlawful. The purchase of real estate is a significant decision. Developer makes no representations concerning any potential for future profit, any future appreciation in value, any income potential, tax advantages, depreciation or investment potential regarding acquiring a unit, nor any monetary or financial advantages related to same. No statements or representations are made regarding the economic or tax benefits to be derived, if any, by buyer from acquiring and/or owning a unit. This project is being developed by 3151 SW 27 Ave PropCo LLC, a Florida limited liability company ("developer"), which was formed solely for such purpose. MDLV, LLC. "One Sotheby's" is affiliated with this entity, but is not the developer of this project. Purchasers shall look solely to developer (and not to One Sotheby's and/or any of its affiliates other than developer) with respect to any and all matters relating to the marketing and/or development of the condominium and with respect to the sales of units in the condominium. All images and designs depicted herein are artist's conceptual renderings, which are based upon preliminary development plans, and are subject to change without notice in the manner provided in the offering documents. All such materials are not to scale and are shown solely for illustrative purposes. Certain services and/or amenities described herein may be part of, or offered from, a privately owned commercial component of the project. Access may be limited, and additional fees may apply for certain services. Square footages stated herein are measured to the exterior boundaries of the exterior walls and the centerline of interior demising walls and in fact vary from the dimensions that would be determined by using the description and definition of the "Unit" set forth in the Declaration (which generally only includes the interior airspace between the perimeter walls and excludes interior structural components).

Creative by Metrostudio.com