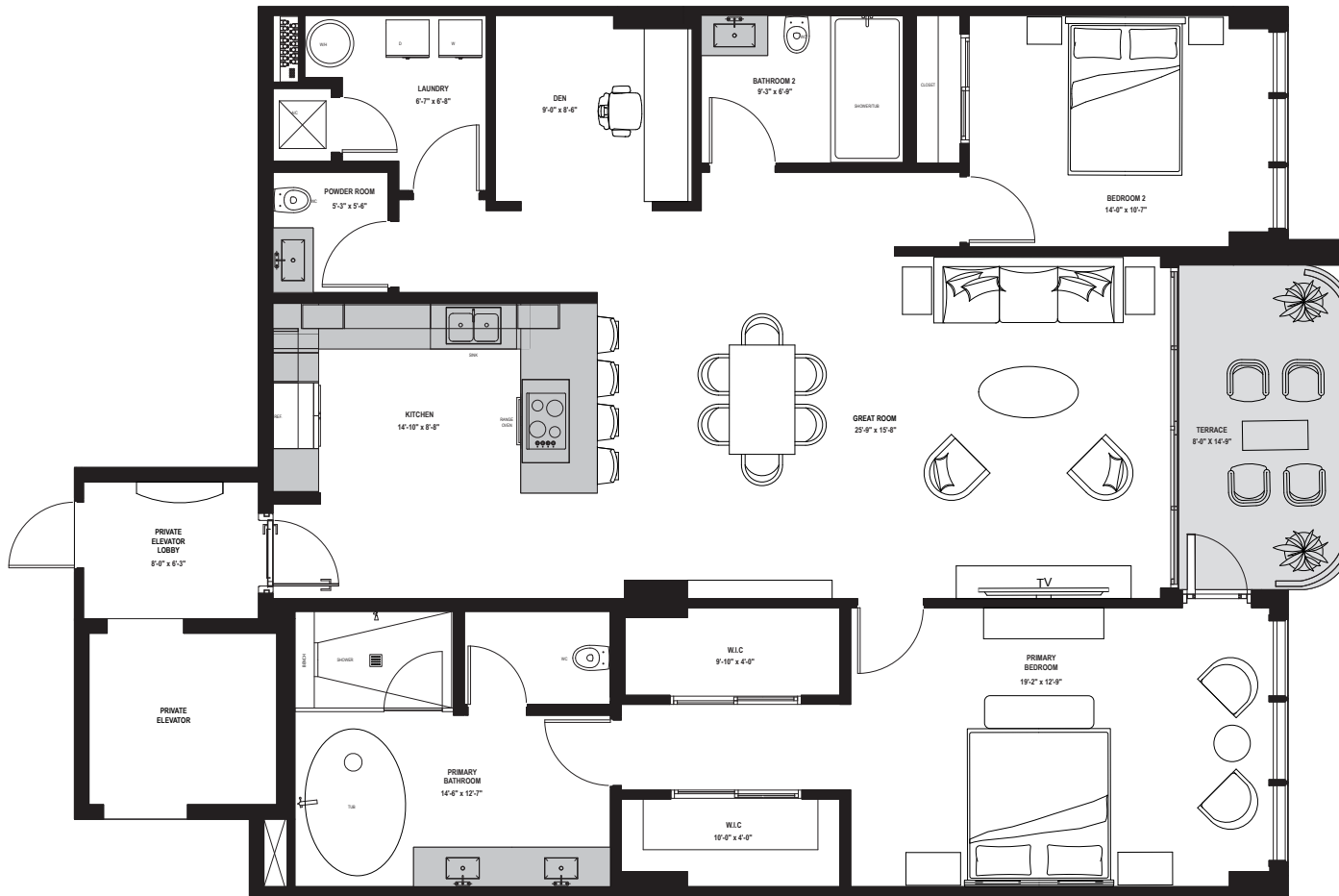


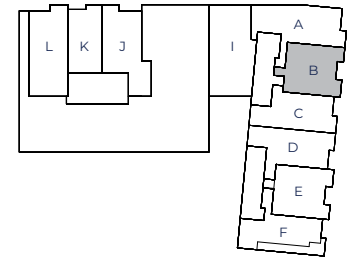
UNIT B | FLOORPLAN



3000 WATERSIDE



E. OAKLAND PARK BLVD.



DETAILS

2 BEDROOMS + DEN

2.5 BATHROOMS

BALCONY

FLOORS 2-7

1,865 INTERIOR SQ. FT.

114 EXTERIOR SQ. FT.

1,979 TOTAL SQ. FT.

ORAL REPRESENTATIONS CANNOT BE RELIED UPON AS CORRECTLY STATING THE REPRESENTATIONS OF THE DEVELOPER. FOR CORRECT REPRESENTATIONS, MAKE REFERENCE TO THIS BROCHURE AND TO THE DOCUMENTS REQUIRED BY SECTION 718.503, FLORIDA STATUTES, TO BE FURNISHED BY A DEVELOPER TO A BUYER OR LESSEE.

THIS OFFERING IS MADE ONLY BY THE PROSPECTUS FOR THE CONDOMINIUM AND NO STATEMENT SHOULD BE RELIED UPON AS REPRESENTATIONS, EXPRESS OR IMPLIED, IF NOT MADE IN THE PROSPECTUS OR SALES CONTRACT. THE SKETCHES, RENDERINGS, DEPICTIONS OF INTERIORS, DECORATION AND FINISHES, GRAPHIC MATERIALS, PLANS, SPECIFICATIONS, FURNISHINGS AND APPLIANCES, TERMS, CONDITIONS AND STATEMENTS CONTAINED IN THIS BROCHURE ARE CONCEPTUAL AND PROPOSED ONLY, AND THE DEVELOPER RESERVES THE RIGHT TO MODIFY, REVISE OR WITHDRAW ANY OR ALL OF SAME IN ITS SOLE DISCRETION AND WITHOUT PRIOR NOTICE. ALL DRAWINGS AND DEPICTIONS ARE ARTISTS RENDERINGS ONLY FOR THE CONVENIENCE OF REFERENCE. CONSULT YOUR AGREEMENT AND THE PROSPECTUS FOR ITEMS INCLUDED WITHIN THE AMENITIES AND UNIT. DIMENSIONS AND SQUARE FOOTAGE ARE APPROXIMATE AND MAY VARY WITH ACTUAL CONSTRUCTION. THE PROPERTIES OR INTEREST DESCRIBED HEREIN ARE NOT REGISTERED WITH THE GOVERNMENTS OF ANY STATE OTHER THAN FLORIDA AND NEW YORK. IN NEW YORK, THE COMPLETE OFFERING TERMS ARE IN A FLORIDA PROSPECTUS AVAILABLE FROM DEVELOPER. A CPS-12 APPLICATION HAS BEEN ACCEPTED IN NEW YORK AS FILE NO. CP-160073. THIS ADVERTISEMENT DOES NOT CONSTITUTE AN OFFER TO ANY RESIDENTS OF ANY OTHER JURISDICTION WHERE PROHIBITED, UNLESS THE PROPERTY HAS BEEN REGISTERED OR EXEMPTIONS ARE AVAILABLE.

DEVELOPED BY:
CLARIDGE HOMES

MARKETING + SALES:
Douglas Elliman
Development Marketing

